

**S.T.S.N GOVERNMENT DEGREE COLLEGE,
KADIRI-515591,
ANANTHAPURAMU (DIST),
ANDHRA PRADESH.**



**RE-ACCREDITATION REPORT
MARCH, 2015.**

Submitted to

**National Assessment and Accreditation Council,
Bangalore – 560 072.**

Dr. P. Srinivasa Naidu M.A., M.Phil., Ph.D.,
Principal.

Dr. R. Hyderali, M.A., M.Phil., Ph.D.,
Lecturer in English,
NAAC Co-ordinator.

Website: www.stsngdckadiri.org.in

E-mail: stsnprincipal@gmail.com

Phone: 08494-224129

Fax: 08494-224129

INDEX

S. No.	Contents	Page
Part - I		
1	Preface	I-II
2	Acknowledgement	III-IV
3	Profile of the Institution	V-XI
Part - II		
4	Criterion – I: Curricular Aspects	1-6
5	Criterion – II: Teaching-Learning and Evaluation	7-24
6	Criterion – III: Research, Consultancy and Extension	25-37
7	Criterion – IV: Infrastructure and Learning Resources	38-46
8	Criterion – V: Student Support and Progression	47-57
9	Criterion – VI: Governance, Leadership and Management	58-78
10	Criterion – VII: Innovations	79-83
Part – III		
Departmental Profiles		
11	English	84-89
12	Telugu	90-94
13	Hindi	95-99
14	Urdu	100-105
15	Mathematics	106-110
16	Physics	111-115
17	Chemistry	116-120
18	Computer Science	121-125
19	Botany	126-131
20	Zoology	132-136
21	Sericulture	137-145
22	History	146-150
23	Economics	151-154
24	Political Science	155-159
25	Commerce	160-164
26	Physical Education	165-168
27	Photo Gallery	169-179

PART – I

PREFACE

Nowadays, it is mandatory for every Government and private aided college in India to get assessed and accredited by the National Assessment and Accreditation Council, an autonomous body of the University Grants Commission. In the context of borderless education and a quest for excellence in Higher Institutes of Learning, NAAC's grading has become a hall-mark of quality.

STSN Govt. Degree College, Kadiri, is one of the premier institutions of Ananthapuramu Dist (A.P) was assessed by the NAAC in the year 2006. The process of accreditation had been a soul-searching experience and a learning process. It was an elaborate self-appraisal, a detailed analysis of what we have and what the stake holders need.

Now, our institution, seeking re-accreditation from the NAAC, is submitting the Re-Accreditation Report (SSR), which has been prepared meticulously, revising and re-organizing the answers for the key aspects. Sincere effort has been made to implement the suggestions made by the peer team and to find out remedies to the areas of concern.

The SSR is divided into three parts.

Part – I

- Preface
- Executive Summary
- Profile of the Institution

Part – II

- Criteria- I Curricular Aspects
- Criteria-II Teaching Learning and Evaluation
- Criteria-III Research, Consultancy and Extension
- Criteria-IV Infrastructure and Learning Resources
- Criteria-IV Student Support and Progression
- Criteria-VI Governance and leadership and management
- Criteria-VII Innovations and best Practices

Part – III

- Departmental Profiles
- Format for Presentation of practice
- Post-Accreditation Initiatives
- Master plan of the institution
- Photo gallery

EXECUTIVE SUMMARY

Education is a continuous process of learning that moulds moral, cultural, social and intellectual aspects of the whole person as an individual and as a member of society. The vision of the college and the mission are framed keeping in view of the above aim of education.

The college offers highly qualitative education to its stakeholders. Apart from optional subjects, the curriculum, designed by S.K.University, has common subjects like Indian Heritage and Culture, Environment Studies, Citizenship and Fundamentals of Computers that are taught to all the students. These subjects along with NSS and Physical Education promote oneness among the students.

The students are admitted into various courses like B.A, B.Com and B.Sc by following the rules and regulations framed by the affiliating university, state and central governments. The reservation policy is followed in letter and spirit. The economically weaker sections of the students are constantly supported by the institution and by the government through the scholarships and through remedial classes to the academically weaker students. The various departments in the college conduct Bridge classes to the newly admitted students in the new subjects.

The college has a very good contingent of teaching and non-teaching staff. The teaching staffs continuously update their skills in the respective subjects. For this purpose, they attend Orientation Programmes, Refresher Courses, Work Shops, Seminars, and consult academic experts. Subsequently they impart the same knowledge to the stakeholders. They try to implement innovative methods of teaching and learning in the class. The college administration, College Planning and Development Council (CPDC) and the government always support the staff in their endeavour for excellence.

In addition to the teaching activities, the staff and the students practise co-curricular, extra-curricular, social out-reach programmes without which the concept of education is meaningless.

Towards the fulfillment of these activities, the students under the guidance of their respective teachers actively participate in the NSS, ECO club and other socially relevant

activities such as helping the AIDS effected people Flood by donating money personally and collecting collectively from society in kind, cash and blood. The Department of Physical Education is another aspect which brings completeness to the studies. In this aspect, the college has won laurels by the departmental activities.

The college administration is confident to say that the college is well-equipped in all spheres. Academically, the college has good human resources in the form of efficient staff and disciplined student community. Every department is well-equipped with all modern machinery and equipment such as lab equipment, OHPs, LCD and Internet etc. The state and UGC have liberally granted funds for the requirements of the college. The college has three well established Computer Labs, English Language Lab, and e-class room. The UGC has sanctioned Rs. 28,00,000/-, for procurement of books and equipment. Taking cognizance of all these resources the CCE has recently asked us to go for Autonomous Status. With these facilities, the staff has taken the challenging responsibility to make the meaningful men in the student community and with their efforts the college results have been steadily growing every year above the university average. In addition to the results, the college administration has been taking the responsibility of providing employment to its stakeholders by constantly guiding them in career opportunities under the career guidance cell of the college and the students are made to know the employment opportunities available in the global market. Jawahar Knowledge Centre (JKC) is another feather in the cap of the college which helps the students to acquire employable skills and thereby employment.

The college administration is also helping the students in addressing their grievances. The personal, academic, financial and social grievances of the students are well attended not only by the staff members but also through outside experts in correcting behavioral problems etc. All these multi-dimensional activities ranging from academic to personal problems are addressed effectively and satisfactorily. With this organizational setup, the college administration would like to fulfill its mission by planning for its future.

PROFILE OF THE INSTITUTION

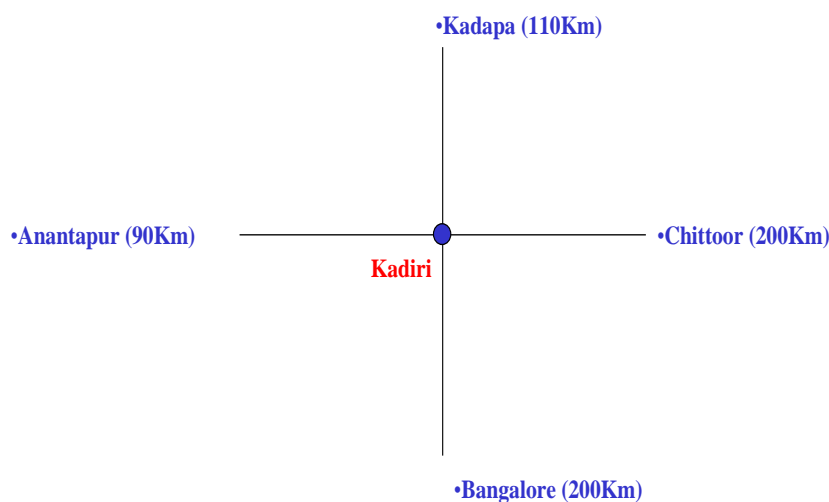
BRIEF HISTORY OF THE COLLEGE

Brief Account of the College

S T S N Government Degree College, Kadiri, named after its Chief Donor Sri Tayi Surya Narayana was setup on 01-10-1975 by the Govt. of Andhra Pradesh vide its G O Ms. No.740 Education(C) Dept. dated 25-06-1975 at Kadiri, Taluk headquarters in Ananthapuramu District of Andhra Pradesh. Initially the college was started with Arts and Commerce Courses and later on Science Courses were introduced in 1993. Recently a post graduate course in Commerce (M.Com) was started in 2014.

Topography

Kadiri is a semi-urban mandal head-quarters lying on the Mumbai-Chennai National Highway, 90 Km from Ananthapuramu Town towards South and 200 Km from Bangalore towards East via Chikballapur, Bagepalli, Kodikonda Checkpost and Gorantla.



PILGRIM AND HISTORICAL PLACES IN KADIRI

Sri Lakshmi Narasimha Swamy Temple

Kadiri itself is a pilgrim center with the Lord Sri Lakshmi Narasimha Swamy as Presiding deity. The temple is popularly known as Khadri Lakshmi Narasimha Swamy. The temple is attracting number of devotees from Andhra Pradesh, Karnataka and Tamilnadu States. According to the inscriptions of the temple the temple was believed to be built between 1509 A.D. to 1530 A.D. by Sri Krishna Devaraya, the most famous king in South India. Kadiri is as popular as Simhachalam in Circar area and Yadagiri in Telangana for having

the Incarnation of Narasimha Swamy as its presiding deity.

Nana Darga

An ordinary soldier in army by name Nana Hyder Vali was turned into a great saint. He showed many Leelas like converting sand into sugar. His Tomb in Kadiri is drawing many Muslims as well as Hindus.

Thikka Narasaiah Samadhi

An ordinary householder in Kadiri was converted into a great yogi. He used to cure permanently the diseases and ailments of the people of those times. His Samadhi (Tomb) in Kadiri is being worshipped as token of respect and memory.

From olden days Kadiri town is a place of saints and stands as an example for religious harmony and co-existence among Hindu - Muslim brethren.

PILGRIM AND HISTORICAL PLACES AROUND KADIRI

Timmamma Marrimanu (Banyan Tree of Thimmamma)

At a distance of 20 Km towards East from Kadiri, there is Timmamma Marrimanu, a giant Banyan Tree spreading in 4.5 hectares of land, attracting both devotees and visitors from all places in Andhra Pradesh, Tamil Nadu and Karnataka. This place is being developed by the Tourism Department of Andhra Pradesh and this tree has found place in Guinness Book of World Records in 1993. The Legend about a pious lady by name Thimmamma is very popular and her story is being sung in the form of ballads, celebrating her deeds with pomp and glory especially on the festival day of “Mahasivarathri”.

Prasanthi Nilayam (Puttaparthi)

From Kadiri at a distance of 30 Km towards North, we can visit Prasanthi Nilayam (Puttaparthi), the abode of The Lord Parthi Sai Baba. Now, spiritual vibrations from the Samadhi (Tomb) of the Lord Parthi Sai Baba are drawing many people from all over the world as it was earlier.

Famous Telugu Poet Vemana Samadhi (Tomb)

At a distance of 8 Km from Kadiri we come across a village namely Katarupalli where the tomb of Telugu poet “Vemana” is built and the place is being developed and

made a tourist center by the Department of Tourism, A.P. The poems written by Vemana deeply moved the district Collector of Kadapa by name C.P. Brown during British Rule. As a result Lord C.P. Brown translated Telugu poems of Vemana into English.

T.B.Sanitorium

Madanapalli, noted for curing Tuberculosis disease, is otherwise popularly known as Arogyavararam (Sanitorium) is situated at 90 Km distance from Kadiri towards South, which is nearer to Horsely Hills, a summer resort, since the reign of Britishers considered to be the Ooty of Andhra Pradesh.

Land - Area of the College

The philanthropists led by Sri Tayi Surya Narayana have purchased the land to the extent of 26.92 acres for the College with Survey Nos. 69-1, 69-2A, 69-2B, 70-1A, 70-1B, 70-2A, 70-2B, 72-3, 148-1B and 67-1 Plinth area.

The present College building is constructed in the plinth area of 2068.47 Sq. m. The college has 20 Lecture Halls, 6 Science Labs, 4 Computer Labs, 2 Library Halls and 1 Gymnasium.

Kadiri is a backward area, in all respects, in Rayalaseema region in the state of Andhra Pradesh. There are no water sources, and the area is full of dry hillocks with little vegetation. Most of the people in and around Kadiri belong to Schedule Castes, Schedule Tribes and Backward Classes. During the days when the children of those illiterate and down trodden people were deprived of Higher Education, a local philanthropist donated Rs. 3 lakhs towards Corpus fund and to set up the degree college at Kadiri as STSN Govt. Degree College with an objective of providing access to higher education. Since its inception the College Development Committee and the Principals and the staff have been rendering their services for achieving better results and succeeded to a larger extent within endeavor. Most of the students of this college who have got degrees are settled all across the world in various positions like Professors, Lecturers, Software Engineers, Administrators, Lawyers, Politicians, Para Military Forces, Secondary Grade Teachers, Junior Lecturers, Physical Education Teachers, Sub-Inspectors and Police Constables.

COURSES OFFERED IN THIS COLLEGE

Course	Group & Subjects	Medium	No. of seats available
B.A.	1. History-Economics-Political Science (HEP)	Telugu	80
	2. History-Political Science-Telugu Literature (THP)	Telugu	80
	3. History- Political Science-Urdu Literature (UHP)	Urdu	60
B.Com.	1. General	Telugu	80
B. Sc.	1. Mathematics-Physics-Chemistry(MPC)	Telugu	30
	2. Botany-Zoology-Chemistry(BZC)	Telugu	30
	3. Chemistry-Zoology-Sericulture(CZS)	Telugu	30
B. Sc. (Restructured Course)	1. Mathematics-Physics-Computer Science(MPCs)	English	30
B.Com (Restructured Course)	1.Computer Applications(CA)	English	60
M.Com	1. M.Com	English	40

Note: Under Part IB Second languages that are available are 1.Telugu, 2.Hindi & 3.Urdu.

The college is gratefully indebted to the distinguished former principals, who nurtured this institution into a citadel of learning. A spirit of hard work pervades the campus. As a result, a good number of the alumni have become successful entrepreneurs, academicians, professionals, technocrats, defense personnel, etc., making their alma mater proud.

A wholesome breakthrough was made during 2005-06 when the need based and job-oriented restructured courses such as Computer Science, Computer Applications, and Communicative English were introduced. With regard to, infrastructure, the college has 40 rooms, a spacious open auditorium, four computer labs with 131 systems and 15 broadband internet connections. Students are exposed to e-learning and latest technological developments.

Presently 1430 students are pursuing higher education, out of which 95% hail from the marginalized sections of society. Research programmes have been taken up by some of the departments. There are 12 M.Phils and 12 Ph.Ds among the teaching staff.

Motto

“Vidyaya Amrutham Asnute”

[Through knowledge, one attains Immortality]

Vision

To establish a just and humane society by imparting quality education, ethical values, value-added knowledge with global standards to the down-trodden sections at affordable cost.

Mission

- To identify, institutionalize and implement some of the “Best Practices” in vogue in the top NAAC assessed institutions.
- To equip the students with global skills so as to make them to meet the demands of the society.
- To inculcate basic human values.
- To train the stake holders in restructured curriculum to strengthen job opportunities.

- To start job-oriented certificate/diploma courses besides conventional courses to instill self-confidence in the students.

Objectives

- To redesign evaluation tools to test the creativity of the students.
- To have linkages with industry and provide students on job training.
- To train students with a rural background in communication skills in English.
- To encourage faculty to take up innovative research projects.
- To make faculty accountable through student-charter.

Jawahar Knowledge Centre was established during 2005-06 to train students in employment skills. 475 students have been trained so far in the JKC. 150 students have been placed in prestigious MNCs, Insurance and Banking sectors. The CPDC is a source of strength to the college.

The college has an enviable record in NSS, games and sports. The Dr. BRAOU operates its services in the college through distance mode of education. The NAAC Peer team that visited the college in January 2006 appreciated certain commendable features of the college and also made a few corrective recommendations. Consequently on NAAC accreditation, the IQAC was constituted on 06-06-2006 to monitor continuous progress in academic and extra curricular activities. A steering committee with Dr P. Srinivasa Naidu, Principal as chairperson and Dr. R. Hyderali, lecturer in English as Coordinator for preparation of the SSR. The committee and the faculty involved themselves wholeheartedly in the preparation and submission of the SSR-II with due consideration to the corrective suggestions made by the peer team, having in mind the interests of the stakeholders.

**S.T.S.N. Government Degree College, Kadiri-515591,
Ananthapuramu (Dist), Andhra Pradesh.**

(Accredited with 'B' Grade by NAAC)

Website: www.stsngdckadiri.org.in

E-mail: stsnprincipal@gmail.com

jkc.kadiri@gmail.com

Phone: 08494-224129

Mobile:

Declaration by the Head of the institution

I certify that the data included in this Re-Accreditation Report (RAR) is true to the best of my knowledge.

The institution prepared this Re-Accreditation Report (RAR) after detailed internal discussions, and no part there of has been outsourced.

I am aware that the Peer team validates the information provided in this RAR during the peer team visit.

Place: Kadiri

Signature of the Head of the Institution

Date:

with seal

PART – II

CRITERION I: CURRICULAR ASPECTS

1.1 Curriculum Planning and Implementation

- 1.1.1** State the vision, mission and objectives of the institution, and describe how these are communicated to the students, teachers, staff and other stakeholders.

The College is an affiliated one and the curriculum is designed and decided by the university authorities and it is common core. However the vision behind the curriculum is to provide concrete knowledge and life skills to the students. The mission and objective is to develop the ability to reason systematically about critical things and issues and to nurture habits which promote lifelong learning behaviours outside the formal settings.

- 1.1.2** How does the institution develop and deploy action plans for effective implementation of the curriculum? Give details of the process and substantiate through specific example(s).

Every lecturer has to plan an academic year plan in which a plan is prepared and its proper implementation is stressed. In addition to that annual curriculum plan, teaching notes and dairy have to be maintained by every lecturer. Follow up meetings are held periodically to know the progress by the head of the institution.

- 1.1.3** What type of support (procedural and practical) do the teachers receive (from the University and/or institution) for effectively translating the curriculum and improving teaching practices?

Procedural support is received from time to time from the university in the form of workshops, induction training, refresher and orientation course.

- 1.1.4** Specify the initiatives taken up or contribution made by the institution for effective curriculum delivery and transaction on the Curriculum provided by the affiliating University or other statutory agency.

The initiatives and the contribution from the institution point of view is less as the institute is an affiliated one. However in the BOS meetings our

suggestions can be given.

- 1.1.5** How does the institution network and interact with beneficiaries such as industry, research bodies and the university in effective operationalisation of the curriculum?

Department wise tie ups are already made in case of a few departments with the local industries and research bodies and in the BOS meetings at the university level, the requirements of the employing agencies are communicated.

- 1.1.6** What are the contributions of the institution and/or its staff members to the development of the curriculum by the University?(number of staff members/ departments represented on the Board of Studies, student feedback, teacher feedback, stakeholder feedback provided, specific suggestions etc.

The University plays a major role and the feedback of the student and the teachers are also taken into consideration.

- 1.1.7** Does the institution develop curriculum for any of the courses offered (other than those under the purview of the affiliating university) by it? If 'yes', give details on the process ('Needs Assessment', design, development and planning) and the courses for which the curriculum has been developed.

Scope for such development is very less as curriculum and the prescription and revision are made at the university level.

- 1.1.8** How does institution analyse/ensure that the stated objectives of curriculum are achieved in the course of implementation?

Sufficient care is taken by the management of the institution through various committees like Staff Council, CPDC and IQAC to implement the stated objectives of curriculum.

1.2 Academic Flexibility

- 1.2.1** Specifying the goals and objectives give details of the certificate/diploma/skill development courses etc., offered by the institution.

The institution plans to start certificate courses in Department of English, Department of Chemistry and Department of Sericulture, so as to improve employable skills among the students.

- 1.2.2** Does the institution offer programmes that facilitate twinning/dual degree? If 'yes', give details.

No, as this is an affiliated college it does not have the freedom for these programmes.

- 1.2.3** Give details on the various institutional provisions with reference to academic flexibility and how it has been helpful to students in terms of skills development, academic mobility, progression to higher studies and improved potential for employability.

Being an affiliated institution less flexibility is enjoyed and the institution has to follow the curriculum prepared by the university.

- 1.2.4** Does the institution offer self-financed programmes? If 'yes', list them and indicate how they differ from other programmes, with reference to admission, curriculum, fee structure, teacher qualification, salary etc.

The institution offers B.Com (Computers) and B.Sc (Computers) on self-financed basis. But the curriculum of these courses is prepared by the university and the norms of the university are followed with reference to admission, curriculum, fee structure, etc.

- 1.2.5** Does the college provide additional skill oriented programmes, relevant to regional and global employment markets? If 'yes' provide details of such programme and the beneficiaries.

Yes, such skill oriented programmes are provided separately by Jawahar Knowledge Centre, Entry Level Coaching and Career Guidance Cell and by some special programs as and when required.

- 1.2.6** Does the University provide for the flexibility of combining the conventional face-to-face and Distance Mode of Education for students to choose the courses/combination of their choice” If ‘yes’, how does the institution take advantage of such provision for the benefit of students?

No. only face-to-face instruction is provided by the institution.

1.3 Curriculum Enrichment

- 1.3.1** Describe the efforts made by the institution to supplement the University’s Curriculum to ensure that the academic programmes and Institution’s goals and objectives are integrated?

As and when we meet with the university officials in BOS meetings or academic calendar meetings, the objectives of stake holders are discussed and the officials are requested to incorporate such required goals in the future curriculum designing.

- 1.3.2** What are the efforts made by the institution to modify, enrich and organize the curriculum to explicitly reflect the experiences of the students and cater to needs of the dynamic employment market?

In the BOS meetings or in the academic calendar meetings modification and enrichment of the curriculum are stressed.

- 1.3.3** Enumerate the efforts made by the institution to integrate the cross cutting issues such as Gender, Climate Change, Environmental Education, Human Rights, ICT etc., into the curriculum?

Ethics and human values subject, environmental education for the second year students and even special programs are conducted on gender issues, climate change, human rights and on ICT are periodically conducted and students are enlightened on such issues by inviting experts in the fields concerned.

- 1.3.4** What are the various value-added courses/enrichment programmes offered to ensure holistic development of students?

At the various levels environmental education, Introduction to computers, Indian Heritage and Culture, Science and Civilization, Citizenship Education and Human Values are imparted to students in order to give them a holistic education.

- 1.3.5** Citing a few examples enumerate on the extent of use of the feedback from stakeholders in enriching the curriculum?

Through the personal interaction with the stake holders their opinions and requirements are collected and the same will be communicated to the university and to the Commissionerate of Collegiate Education.

- 1.3.6** How does the institution monitor and evaluate the quality of its enrichment programmes?

Through establishment of an Internal Quality Assessment Cell the monitoring and the evaluation shall be made and the feedback of stakeholders shall play a predominant role in the formulation of the system for such monitoring and evaluation.

1.4 Feedback System

- 1.4.1** What are the contributions of the institution in the design and development of the curriculum prepared by the University?

A representative from the colleges participates in the BOS meetings and thus college ensures the required design and development in the curriculum prepared by affiliating university.

- 1.4.2** Is there a formal mechanism to obtain feedback from students and stakeholders on Curriculum? If 'yes', how is it communicated to the University and made use internally for curriculum enrichment and introducing changes/new programmes?

Yes, there is a formal mechanism to obtain feedback from students. The obtained feedback forms are analysed and suitable suggestions will be given to the teachers or officials concerned.

1.4.3 How many new programmes/courses were introduced by the institution during the last four years? What was the rationale for introducing new courses/programmes?

New programmes and courses are seriously contemplated very soon they are going to be introduced.

Any other relevant information regarding curricular aspects which the college would like to include.

CRITERION II: TEACHING - LEARNING AND EVALUATION

2.1 Student Enrolment and Profile

2.1.1 How does the college ensure publicity and transparency in the admission process?

Well before commencement of the academic year college supplies prospectus containing the information about the courses offered, fee structure and the eligibility criteria for admissions. In addition to that a wide publicity is given both in print & electronic media.

Transparency is ensured in the admission procedure by displaying the list of the admitted candidates in college notice board and efforts are made to admit as many students as possible by increasing required number of seats.

2.1.2 Explain in detail the criteria adopted and process of admission (Ex. (i) merit (ii) common admission test conducted by state agencies and national agencies (iii) combination of merit and entrance test or merit, entrance test and interview (iv) any other) to various programmes of the Institution.

Based on the marks secured at intermediate, duly following the rule of reservations admissions are made.

2.1.3 Give the minimum and maximum percentage of marks for admission at entry level for each of the programmes offered by the college and provide a comparison with other colleges of the affiliating university within the city/district.

Minimum pass percentage in the qualifying examination is required.

2.1.4 Is there a mechanism in the institution to review the admission process and student profiles annually? If 'yes' what is the outcome of such an effort and how has it contributed to the improvement of the process?

Yes, an admission committee will be formed with all the heads of the departments and they review the admissions and recommend further suggestions if required. At the time of admission into the course, the standard of students is assessed in oral interviews. Further, in the introductory classes, the teachers

interact with the students to identify their aptitude before the regular teaching programme commences and class wise bridge classes are conducted to bridge the knowledge gap.

2.1.5 Reflecting on the strategies adopted to increase/improve access for following categories of students, enumerate on how the admission policy of the institution and its student profiles demonstrate/reflect the National commitment to diversity and inclusion

- SC/ST
- OBC
- Women
- Differently abled
- Economically weaker sections
- Minority community
- Any other

The institution provides admission to the candidates from open category, SCs, STs, BCs, differentially-abled and sports category as per the rules of reservation of A.P. Govt. 33% of seats are reserved for women in each category.

Statutory reservations: Seats reserved to various categories are:

Scheduled Castes	:	15%
Scheduled Tribes	:	6%
Backward Castes	:	25%
Differentially-abled	:	3%
Sports and Games	:	3%
NCC & NSS	:	3%
Non-Local	:	15%

Wide publicity in the media is given regarding low fee structure and scholarship facilities to attract the students.

2.1.6 Provide the following details for various programmes offered by the institution during the last four years and comment on the trends. i.e., reasons for increase/decrease and actions initiated for improvement.

UG Programmes

Programs	No. of applications	No. of Students Admitted	Demand Ratio	Seats	Increased to accommodate
B.A.	457	457	0		
B.Sc.	417	417	0		
B.Com.	411	411	0		

2.2 Catering to Diverse Needs of Students

2.2.1 How does the institution cater to the needs of differently abled students and ensure adherence to government policies in this regard?

Scholarships are provided to the differently-abled candidates and special coaching is also offered to them as per the instruction of the government and the affiliating university. They are sensitized about various government schemes applicable to them. The visually challenged students are provided scribes during university exams. Physically challenged students are allowed to take examinations in the rooms of ground floor only.

2.2.2 Does the institution assess the students' needs in terms of knowledge and skills before the commencement of the programme? If 'yes', give details on the process.

Before the commencement of the regular program previous subject knowledge and aptitude assessed by asking some fundamental questions in the subjects concerned and an entry level test will also be conducted in order to assess the students knowledge and skills.

2.2.3 What are the strategies drawn and deployed by the institution to bridge the knowledge gap of the enrolled students to enable them to cope with the programme of their choice? (Bridge/Remedial/Add-on/Enrichment Courses, etc.

At the time of admission into the course, the standard of students is assessed through interviews. Further, in the introductory classes, the teachers interact with the students to identify their aptitude before the regular teaching programme commences and class wise bridge classes are conducted to bridge the knowledge gap.

2.2.4 How does the college sensitize its staff and students on issues such as gender, inclusion, environment etc.?

A discipline committee conducts separate meetings on the issues of the gender, inclusion, environment and etc. To these meeting the police persons, social workers and environmental experts are invited to enlighten and to sensitize both the staff and students. These types of meetings are conducted periodically. Regarding the gender issues the Women Empowerment Cell conducts separate meeting to sensitize the girl students.

2.2.5 How does the institution identify and respond to special educational/learning needs of advanced learners?

Based on the performance in the class, tests and previous years university examinations, the slow learners and their weak areas are identified and the institution organizes special remedial teaching classes out of the college working hours for them. Assignments are given to motivate them. In order to facilitate the slow learners and to save the academic year, students are promoted to next stage irrespective of the result in the year-end examination.

The institution identifies the advanced learners on the basis of their merit as well as their performance in the interactive sessions. In the case of advanced learners the departments concerned encourage to take up student projects and to participate in various competitions. The prize winners are appreciated and rewarded by the head of the institution on special occasions like Independence Day, Republic Day, Teacher's Day and College Day etc.

2.2.6 How does the institute collect, analyze and use the data and information on the academic performance (through the programme duration) of the students at risk of drop out (students from the disadvantaged sections of society, physically challenged, slow learners, economically weaker sections etc.)?

- Mentorship is assigned to each faculty member based on the subject and classes they handle.
- Each staff member is allotted around 30 students to monitor for all the

three years of their stay. Mentor sheets are designed to make provision to include all academic, co-curricular and personal details of the candidates including their family details in the first year.

- Provides counseling in academic, co-curricular on personal aspects and also advises in choosing certificate/add-on programmes offered in the institution.
- Points out strengths and areas for development in each student.
- Helps the students to set long term career goals and short term learning objectives to enables them to perform effectively.
- Mentor meets his/her wards regularly. Listens to their grievances including their personal problems and redresses at the basic level itself.
- Slow learners are given tutorials and remedial coaching in the subjects they are lagging behind.

2.3 Teaching-Learning Process

2.3.1 How does the college plan and organize the teaching, learning and evaluation schedules? (Academic calendar, teaching plan, evaluation blue print, etc.)

- The institution follows the academic calendar stipulated by the affiliating University and annual academic plans are prepared accordingly.
- Every member of the teaching faculty submits to the Principal a teaching schedule in the form of curricular plan consisting of the number of hours of work per week, the topics to be covered and the synopsis of the lecture at the beginning of the academic year. A copy of the Curricular Plan is also displayed on the departmental notice boards.
- Assignments given to the students are assessed periodically and the students are informed about their performance.
- Periodic Tests, Group discussions are also conducted as a part of teaching and learning evaluation schedule.
- Another method of evaluation is, assessing the performance of the student in the periodical tests and pre-final examinations.

2.3.2 How does IQAC contribute to improve the teaching –learning process?

The IQAC under the chairmanship of the principal visit all the departments periodically and assesses the infrastructure facilities and teaching & Learning process by verifying the unit test papers, assignments, project works etc., and it ascertains the facts by providing feedback forms both to the staff and students.

2.3.3 How learning is made more student-centric? Give details on the support structures and systems available for teachers to develop skills like interactive learning, collaborative learning and independent learning among the students?

Largely teaching is made on interactive mode. In most of the occasions the students participate in teach back seminars, project works and in the notes preparation. Individual, pair works, group works are given to work both independently and in collaborative spirit in the learning process. The lecturers work as facilitators in the process.

2.3.4 How does the institution nurture critical thinking, creativity and scientific temper among the students to transform them into life-long learners and innovators?

- New strategies have been devised especially by the language teachers, to increase student talk-time with student centric activities like Pair work, group activity etc.
- The institution exposes the students to the contemporary needs through participation of students.
- Seminars and other competitions.
- Special coaching programmes in Communication skills/spoken English and also various competitive examinations.
- Inculcating positive thinking for personality development.
- Guest-Lectures by experts.
- Interface between visiting Professors and students.
- Exhibitions.
- Paper Presentations at Seminars.
- Telecasting the lessons of MANA TV in the subjects concerned.
- Participation in Inter-collegiate competitions.

- English Language laboratory is utilized for training in Soft skills.
- Event management In PG courses two hours per week in each semester are earmarked for tutorials as well as seminar presentations.
- Jawahar Knowledge Center (JKC) for training the students in soft and analytical skills.

2.3.5 What are the technologies and facilities available and used by the faculty for effective teaching? Eg: Virtual laboratories, e-learning - resources from National Programme on Technology Enhanced Learning (NPTEL) and National Mission on Education through Information and Communication Technology (NME-ICT), open educational resources, mobile education, etc.

The following measures are taken to sustain and enhance the quality of teaching-learning and evaluation.

- Live telecast of Video lessons on MANA TV channel.
- Utilization of latest technologies like OHP, LCD and Internet.
- Teachers are encouraged to participate in Refresher, Orientation Courses, Seminars, Workshops and Conferences.
- Encouraging the students to take up Study projects.
- Imparting soft skills through Jawahar Knowledge Centre (JKC) of the college.
- Establishment of English Language Lab for training the students in speaking skills.
- Introduction of practicals in subjects like Commerce, Mathematics and English.
- Implementation of ward system tutorials and remedial coaching to help the slow learners and under-achievers.

2.3.6 How are the students and faculty exposed to advanced level of knowledge and skills (blended learning, expert lectures, seminars, workshops etc.)?

- Teachers and students use library and Internet facilities for gaining knowledge on the latest developments in their respective subjects.
- Faculty members attend Refresher/Orientation courses for updating their

knowledge and skills.

- Paper clippings and information from the net are kept available to the students. News about special events is displayed on the departmental notice board.
- Students participate in group discussions for exchange of views and ideas.
- Two Minor Research Projects have been completed and a proposal of one Major Research Project is submitted.

2.3.7 Detail (process and the number of students benefitted) on the academic, personal and psycho-social support and guidance services (professional counseling/mentoring /academic advise) provided to students?

Almost all the students of the college, are benefited by the professional counseling, mentoring and in advising the academic preferences. In this regard the Jawahar Knowledge Centre, Career Guidance Cell, Entry Level Coaching and Women Empowerment Cell take lead.

2.3.8 Provide details of innovative teaching approaches/methods adopted by the faculty during the last four years? What are the efforts made by the institution to encourage the faculty to adopt new and innovative approaches and the impact of such innovative practices on student learning?

- Use of ICT in teaching learning activity for updating of knowledge by the students and by the faculty.
- Regular assessment of students through internal tests in UG courses and the marks are recorded in the departmental registers and the valued scripts are returned to students for analyzing their answers.
- Greater participation by students in Group Discussions.
- Deputing staff to attend national seminars, Conferences and workshops.
- The institution deposes staff for organizing seminars, conferences, guest-lectures etc., in other colleges also.

2.3.9 How are library resources used to augment the teaching-learning process?

Yes, all the departments have departmental libraries and 20,000 books are

available in total. Departmental libraries provide quick reference for the faculty and students.

- 2.3.10** Does the institution face any challenges in completing the curriculum within the planned time frame and calendar? If 'yes', elaborate on the challenges encountered and the institutional approaches to overcome these.

No

- 2.3.11** How does the institute monitor and evaluate the quality of teaching learning?

Feedback from students is obtained in the proforma appended to the self-study manual of the NAAC. Based on the answers provided and comments noted on the feedback a collective decision is taken by the staff council. Based on the feedback, the institution takes steps for effective improvement in teaching-learning process. Corrective measures will be taken by the staff as and when required. Counseling is given to parents and students in this regard.

2.4 Teacher Quality

- 2.4.1** Provide the following details and elaborate on the strategies adopted by the college in planning and management (recruitment and retention) of its human Resource (qualified and competent teachers) to meet the changing Requirements of the curriculum.

Highest qualification	Professor		Associate		Assistant		Total
	Male	Female	Male	Female	Male	Female	
Permanent teachers							
D.Sc./D.Litt.	-	-	-	-	-	-	-
Ph.D.	-	-	-	2	10	2	12
M.Phil.	-	-	-	-	7	5	12
PG	-	-	-	-	5	5	10
Temporary teachers							
Ph.D.	-	-	-	-	-	-	-
M.Phil.	-	-	-	-	-	-	-
PG	-	-	-	-	4	1	5
Part-time teachers							
Ph.D.	-	-	-	-	-	-	-
M.Phil.	-	-	-	-	1		1
PG	-	-	-	-	4		4

2.4.2 How does the institution cope with the growing demand/scarcity of qualified senior faculty to teach new programmes/ modern areas (emerging areas) of study being introduced (Biotechnology, IT, Bioinformatics etc.)? Provide details on the efforts made by the institution in this direction and the outcome during the last three years.

- As this is a Government college, the Andhra Pradesh Public Service Commission (APPSC), Hyderabad and the Commissioner of Collegiate Education (CCE), AP, Hyderabad makes the appointment of the teaching staff.
- 07 faculty members have Ph.D and 09 possess M.Phil and the college has 20 regular teachers to handle the courses.
- Though some regular posts are vacant, the deficiency is made up with the recruitment of lecturers on part-time and contract basis.
- 06 part-time, 07 contract lecturers and 05 guest faculty members are engaged besides 28 regular staff members.

2.4.3 Providing details on staff development programmes during the last four years elaborate on the strategies adopted by the institution in enhancing the teacher quality.

The institution encourages teaching staff to apply for research grants from various organizations under different schemes and provide facilities like study leave, deputation to national/International conferences / seminars / training programmes, organizing national conferences. The institution provides professional development facilities also.

a) Nomination to staff development programmes

Academic Staff Development Programmes	Number of faculty nominated
Refresher courses	19
HRD programmes	--
Orientation programmes	19
Staff training conducted by the university	--

Staff training conducted by other institutions	3 by Infosys and 2 by ELF
Summer / winter schools, workshops, etc.	--

b) Faculty Training programmes organized by the institution to empower and enable the use of various tools and technology for improved teaching- learning

- Teaching learning methods/approaches: --
- Handling new curriculum --
- Content/knowledge management --
- Selection, development and use of enrichment materials --
- Assessment --
- Cross cutting issues --
- Audio Visual Aids/multimedia --
- Teaching learning material development, selection and use –

c) Percentage of faculty

- Invited as resource persons in Workshops/Seminars/Conferences organized by external professional agencies - 4
- Participated in external Workshops/Seminars/Conferences recognized by national/ international professional bodies -10
- Presented papers in Workshops / Seminars / Conferences conducted or recognized by professional agencies -17

2.4.4 What policies / systems are in place to recharge teachers? (Eg: providing research grants, study leave, support for research and academic publications teaching experience in other national institutions and specialized programmes industrial engagement etc.)

The institution encourages teaching staff to apply for research grants from various organizations under different schemes and provide facilities like study leave, deputation to national / International conferences / seminars / training programmes, organizing national conferences. The institution provides professional development facilities also.

- 2.4.5** Give the number of faculty who received awards/recognition at the state, national and international level for excellence in teaching during the last four years. Enunciate how the institutional culture and environment contributed to such performance/achievement of the faculty.

Dr S.Smitha, Reader in Sericulture, was honored with Best Teacher's Award in 2010.

- 2.4.6** Has the institution introduced evaluation of teachers by the students and external Peers? If yes, how is the evaluation used for improving the quality of the teaching-learning process?

All the lecturers required to attend the orientation and Refresher courses which will be organized by academic staff colleges across the country. In these courses the teacher's have to qualify and their teaching is evaluated by a panel of expert members. In addition to that the lecturers assess their own quality of teaching level when they present papers in the national and international seminars. Apart from this the student's feedback is the real evaluation of the quality of teaching of a teacher. Thus the quality of teaching and learning process is evaluated.

2.5 Evaluation Process and Reforms

- 2.5.1** How does the institution ensure that the stakeholders of the institution especially students and faculty are aware of the evaluation processes?

The pass percentage of the students and the quality of marks that they have got is a yard stick to know the quality of teaching by the stakeholders and by the faculty.

At the admission stage itself the students are made to know of the system of examinations, i.e., annual pattern, practical exams, internal assessments and valuation system of the University.

- 2.5.2** What are the major evaluation reforms of the university that the institution has adopted and what are the reforms initiated by the institution on its own?

- The institution and the Commissionerate of Collegiate Education issue time to time guidelines in order to improve the evaluation process. Some times such lecturers who perform well will be awarded & rewarded, and lecturers who ill perform will be punished.
- The Affiliating University has introduced the following evaluation reforms.
- As an innovative step, practicals were introduced in subjects like commerce, mathematics and English at the U.G. level – Internal Assessment based on field activity, seminars etc.
- OMR Sheets and code numbers were introduced for a transparency in evaluation system.
- Keeping the results on the University website and extend the facility to get memorandum of marks.
- Moderation boards are constituted to moderate papers in the UG courses before the declaration of results.
- Since the answer scripts of the examinees are coded before the valuation, the scopes for post-examination malpractices are minimized.
- The institution ensures that the examinations are conducted as per the guidelines of the University.
- Field work and record work carry marks in University practical exams. Submission of certified records is made compulsory.

2.5.3 How does the institution ensure effective implementation of the evaluation reforms of the university and those initiated by the institution on its own?

Examination Committee is constituted with the principal and senior lecturers to ensure the university and the institutional reforms are effectively implemented by conducting periodical meetings, visiting the departments and by interacting with the students.

2.5.4 Provide details on the formative and summative evaluation approaches adapted to measure student achievement. Cite a few examples which have positively impacted the system.

Internal assessment in certain subjects like Commerce, History, Political Science and Economics are introduced. The evaluation of the student performance is based on continuous progression like seminar papers presented, project report, tests etc.

2.5.5 Enumerate on how the institution monitors and communicates the progress and performance of students through the duration of the course/programme? Provide an analysis of the students results/achievements (Programme/course wise for last four years) and explain the differences if any and patterns of achievement across the programmes/courses offered.

By way of tests, assignments, seminars, interactions and so on, the caliber of the students is tested, and the marks are announced in the classroom and placed on the departmental notice boards. Quarterly progress reports are sent to the residential addresses.

The principal convenes a meeting of the parents where in he interacts with the parents about their progress and seeks their help in monitoring the performance of the academically slow learners.

2.5.6 Detail on the significant improvements made in ensuring rigor and transparency in the internal assessment during the last four years and weightages assigned for the overall development of students (weightage for behavioral aspects, independent learning, communication skills etc.

- Use of the ICT in teaching learning activity for updating of knowledge by the students and by the faculty.
- Regular assessment of students through internal tests in UG courses and the marks are recorded in the departmental registers and the valued scripts are returned.
- Field trips are insisted and weightage is given in the internal assessment.
- Greater participation by students in Group Discussions.
- Deputing staff to attend national seminars, Conferences and workshops.
- The institution deputes staff for organizing seminars, conferences, guest-lectures etc., in other colleges also.

2.5.7 Does the institution and individual teachers use assessment/evaluation as an indicator for evaluating student performance, achievement of learning objectives and planning? If 'yes' provide details on the process and cite a few examples.

- To identify specific objectives and make strategic plans to train students to cope with present day globalization, liberalization and information technology.
- Computerization of administration, evaluation and examination work. The entire data of the college may be maintained through computerization.
- Motivate the staff to concentrate on acquiring M.Phil/Ph.D and continue research work after their Ph.D.,
- More students encouraged to appear for competitive examinations.
- Government appoints well-qualified staff to teach re-structured courses.

Action Taken:

- Students with a rural background were found to be lacking in communication skills in English. The JKC of the college has been training them in the said skills apart from other global skills to enable them to meet the challenges of the global market. Top priority is given to e-learning and 04 computer laboratories are kept at the disposal of the stake-holders.
- The entire administrative machinery is computerized. Scholarships are disbursed online. Examination work and the entire student data base is maintained through electronic media. All official communication from the O/o the CCE are received and replies are sent online.
- One Minor Research Projects have been completed. One Major Research Project is under consideration.
- 09 faculty members have acquired M.Phil and 07 Ph.D., degrees.
- The alumni and the parent-teacher associations are a source of strength to the college. They are actively involved in the development of infrastructure in the college.
- Apart from imparting the skill through JKC, students are also trained for ICET, APPSC, UPSC & Bank examinations.
- Guest-lecturers, who are well-qualified, are engaged to teach restructured courses.

2.5.8 What are the mechanisms for Redressal of grievances with reference to evaluation both at the college and University level?

A Grievance and Redressal cell was established in the college during 2002-03. The cell receives complaints from the students on valuation and guides them on the procedure to be adopted for revaluation in the university examination.

2.6 Student performance and Learning Outcomes

2.6.1 Does the college have clearly stated learning outcomes? If 'yes' give details on how the students and staff are made aware of these?

Yes, the college has clearly stated outcomes the learning outcomes are generally prescribed by an expert committee at the Commissionerate level itself and the principal, staff and students sit together and discuss the desired learning outcomes that have to be achieved out of the courses that they are pursuing. If necessary experts in the field are invited to enlighten the staff and the students.

2.6.2 How are the teaching, learning and assessment strategies of the institution structured to facilitate the achievement of the intended learning outcomes?

By way of tests, assignments, seminars, interactions and so on, the caliber of the students is tested, and the marks are announced in the classroom and placed on the departmental notice boards. There is a plan to send quarterly progress reports to the residential addresses.

The principal convenes a meeting of the parents where in he interacts with the parents about their progress and seeks their help in monitoring the performance of the academically slow learners.

2.6.3 What are the measures/initiatives taken up by the institution to enhance the social and economic relevance (quality Jobs, entrepreneurship, innovation and research aptitude) of the courses offered?

- The following measures are taken to sustain and enhance the quality of teaching-learning and evaluation.
- Live telecast of Video lessons on MANA TV channel.

- Utilization of latest technologies like OHP and LCD.
- Teachers are encouraged to participate in Refresher, Orientation Courses, Seminars, Workshops and Conferences.
- Encouragement to the students to take up Study projects
- Imparting soft skills through Jawahar Knowledge Centre (JKC) of the college.
- Establishment of English Language Lab for training the students in speaking skills.
- Introduction of practicals in subjects like Commerce, Mathematics and English.
- Implementation of ward system tutorials and remedial coaching to help the slow learners and under-achievers.

2.6.4 How does the institution collect and analyze data on student learning outcomes and use it for planning and overcoming barriers of learning?

In the first year itself, by way of ward monitoring system the student's individual and academic data is collected and analyzed. Out of this analysis a particular plan will be devised to overcome the barriers of learning.

2.6.5 How does the institution monitor and ensure the achievement of learning outcomes?

By way of tests, assignments, seminars, interactions and so on, the caliber of the students is tested, and the marks are announced in the classroom and placed on the departmental notice boards. There is a plan to send quarterly progress reports to the residential addresses.

The principal convenes a meeting of the parents where in he interacts with the parents about their progress and seeks their help in monitoring the performance of the academically slow learners.

2.6.6 What are the graduates attributes specified by the college/affiliating university? How does the college ensure the attainment of these by the students?

Understanding of the subjects prescribed and having life skills to eak out

their own living by following traditional human values and to make them useful citizens and to fill confidence in them to survive in the competitive world.

Any other relevant information regarding Teaching-Learning and Evaluation which the college would like to include.

CRITERION III: RESEARCH, CONSULTANCY AND EXTENSION

3.1 Promotion of Research

3.1.1 Does the institution have recognized research center/s of the affiliating University or any other agency/organization?

No, as the college is only affiliated one, it is not a research centre.

3.1.2 Does the Institution have a research committee to monitor and address the issues of research? If so, what is its composition? Mention a few recommendations made by the committee for implementation and their impact.

A committee consisting of doctorate teachers looks after research activity.

3.1.3 What are the measures taken by the institution to facilitate smooth progress and implementation of research schemes/projects?

- autonomy to the principal investigator
- timely availability or release of resources
- adequate infrastructure and human resources
- time-off, reduced teaching load, special leave etc. to teachers
- Support in terms of required technology and information.
- facilitating timely auditing and submission of utilization certificate to the funding authorities
- any other required help

The UGC Committee and Research Committee facilitate the process of dissemination of the information in respect with the external research funding agencies and programmes through UGC Network Resource Centre of the college. It motivates and guides the staff to take up Minor Research Projects. Its effort in bringing awareness among the students about the fellowships is commendable. The available ICT infrastructure is to be utilized to its optimum level. Timely audit and forwarding of the utilization certificates of the concerned schemes which are in vogue in the college shall contribute for the timely more release of resources from the funding agencies.

3.1.4 What are the efforts made by the institution in developing scientific temper and research culture and aptitude among students?

- Project works are given
- Encouraged to write articles
- Field trips are organized.

To bring scientific temper and to motivate the staff and students towards research and extension work.

3.1.5 Give details of the faculty involvement in active research (Guiding student research, leading Research Projects, engaged in individual/collaborative research activity, etc.

Faculty of many departments is actively involved in guiding the students in mini research projects.

3.1.6 Give details of workshops/training programmes/sensitization programmes conducted /organized by the institution with focus on capacity building in terms of research and imbibing research culture among the staff and students.

Many programmes were conducted on various aspects related with the student's survival and career and to the farmer community inhabiting the surrounding villages. To note a few are guiding the villagers in the Rythu Melas on Sericulture Farming, Career Guidance on the avenues available for the students, sensitizing the students towards the development of positive personality traits, etc.

3.1.7 Provide details of prioritized research areas and the expertise available with the institution.

The college visualizes that the prioritized research area is agro-based field, particularly, Sericulture as the cultivation of the area is rain fed. Apart from this water analysis as the water available in the area is fluoride contaminated.

- 3.1.8** Enumerate the efforts of the institution in attracting researchers of eminence to visit the campus and interact with teachers and students?

The college makes sincere efforts to bring eminent scientists and professors by arranging seminars or lectures with a fond hope to have interaction with the teachers and students.

- 3.1.9** What percentage of the faculty has utilized Sabbatical Leave for research activities? How has the provision contributed to improve the quality of research and imbibe research culture on the campus?

In government colleges this facility is not provided.

- 3.1.10** Provide details of the initiatives taken up by the institution in creating awareness/advocating/transfer of relative findings of research of the institution and elsewhere to students and community (lab to land).

The effort of the college is highly commendable in taking the knowledge from lab to land. An instance of this is that a national seminar has been conducted in the college on - “Cutting Edge Technologies in Vanya Silks” by which a number of farmers have been benefited by gaining the knowledge about a new method of sericulture rearing. Taking a cue from such efforts the college is to conduct many a seminar and workshop to take the knowledge from lab to land and society.

3.2 Resource Mobilization for Research

- 3.2.1** What percentage of the total budget is earmarked for research? Give details of major heads of expenditure, financial allocation and actual utilization.

No separate budget has been earmarked for the same as the college is affiliated one and does not have a separate budget for research. Books to the library and the ICT infrastructure has been added through the budget allotted for the Minor Research Projects and the seminars, conferences and workshops.

- 3.2.2** Is there a provision in the institution to provide seed money to the faculty for research? If so, specify the amount disbursed and the percentage of the faculty

that has availed the facility in the last four years?

Facility to provide seed money to the faculty for research does not exist in the college.

3.2.3 What are the financial provisions made available to support student research projects by students?

No special provision to finance and support the student research projects is available in the college. It is the interest evinced by the student and the teacher that makes them to spend from their own resources for the student research projects till date.

3.2.4 How does the various departments/units/staff of the institute interact in undertaking inter-disciplinary research? Cite examples of successful endeavors and challenges faced in organizing interdisciplinary research.

There is no scope in the existing conditions.

3.2.5 How does the institution ensure optimal use of various equipment and research facilities of the institution by its staff and students?

Through the available UGC funds and special fee every department has been provided with sufficient infrastructure and the books. This available infrastructural paraphernalia is being utilized to its optimum in a constructive way to build an atmosphere of research in the college.

3.2.6 Has the institution received any special grants or finances from the industry or other beneficiary agency for developing research facility? If 'yes' give details.

No finances from the industry or any other beneficiary have been received but two minor research projects have been taken up and completed by the departments of Sericulture and Chemistry. For this an amount of Rs.75, 000/- and 1, 00,000/- have been received from the UGC by the departments of Chemistry and Sericulture respectively.

- 3.2.7** Enumerate the support provided to the faculty in securing research funds from various funding agencies, industry and other organizations. Provide details of ongoing and completed projects and grants received during the last four years.

Details from the office are to be incorporated.

None

Nature of the Project	Duration Year From To	Title of the project	Name of the funding agency	Total grant		Total grant received till date
				Sanctioned	Received	
Minor projects	2008-10	Ericulture in Kadiri	UGC	-	-	-
Major projects	-	-	-	-	-	-
Interdisciplinary projects	-	-	-	-	-	-
Industry sponsored	-	-	-	-	-	-
Students' research projects	-	-	-	-	-	-
Any other (specify)	-	-	-	-	-	-

3.3 Research Facilities

- 3.3.1** What are the research facilities available to the students and research scholars within the campus?

No special and particular research facilities are available in the college as the college is an affiliated one and the labs, the library and the infrastructure available is sufficient to a college imparting training for UG Degree courses.

- 3.3.2** What are the institutional strategies for planning, upgrading and creating infrastructural facilities to meet the needs of researchers especially in the new and emerging areas of research?

The institution is doing its best to upgrade the infrastructure and research facilities through the UGC funds especially in the new and emerging areas.

- 3.3.3** Has the institution received any special grants or finances from the industry or other beneficiary agency for developing research facilities? If 'yes', what are the instruments/facilities created during the last four years.

Some of the departments which were sanctioned the minor research projects procured some of the instruments - entomological research microscopes, centrifuges and spectro-photo meters which prove helpful for their research work with the finances sanctioned by the UGC.

- 3.3.4** What are the research facilities made available to the students and research scholars outside the campus /other research laboratories?

There are no particular facilities made available to the students and research scholars outside the campus but they are free to visit the University Library or any other agency suitable for the collection of material for their research.

- 3.3.5** Provide details on the library/information resource centre or any other facilities available specifically for the researchers?

The main source is the library of the college and apart from this is the facility of Internet, JKC, Entry Level Coaching, Book Bank, the UGC Network Resource Centre and the journals and magazines available in the Career Guidance Cell of the college.

- 3.3.6** What are the collaborative research facilities developed/created by the research institutes in the college. For ex. Laboratories, library, instruments, computers, new technology etc.

The department of Sericulture created Technical Service Centre for the purpose of farmers and the Vermi Compost Plant for the furtherance of research.

3.4 Research Publications and Awards

3.4.1 Highlight the major research achievements of the staff and students in terms of

- Patents obtained and filed (process and product)
- Original research contributing to product improvement
- Research studies or surveys benefiting the community or improving the services
- Research inputs contributing to new initiatives and social development

No major research achievement in terms of the mentioned criteria has been made. Not much activity is more confined to the teaching.

3.4.2 Does the Institute publish or partner in publication of research journal(s)? If 'Yes', indicate the composition of the editorial board, publication policies and whether such publication is listed in any international database?

No such activity took place till date.

3.4.3 Give details of publications by the faculty and students:

- Publication per faculty
- Number of papers published by faculty and students in peer reviewed journals (national / international)
- Number of publications listed in International Database (for Eg: Web of Science, Scopus, Humanities International Complete, Dare Database - International Social Sciences Directory, EBSCO host, etc.)
- Monographs
- Chapter in Books
- Books Edited
- Books with ISBN/ISSN numbers with details of publishers
- Citation Index
- SNIP
- SJR
- Impact factor
- h-index

During the conduct of the National Seminar on “Cutting Edge Technologies in Vanya Silks” a souvenir was published with the ISBN No. 978-9380730-011.

3.4.4 Provide details (if any) of

- research awards received by the faculty
- recognition received by the faculty from reputed professional bodies and agencies, nationally and internationally

No research awards have been received by the faculty. ----

3.5 Consultancy

3.5.1 Give details of the systems and strategies for establishing institute-industry interface?

In the college some of the departments have already established an interface between institute-industry and this interface has to be strengthened through village linked programmes through deliberations at the executive echelons of the college.

3.5.2 What is the stated policy of the institution to promote consultancy? How is the available expertise advocated and publicized?

The stated policy of the institution to promote consultancy is through the website of the college for same and through periodical brochures and through periodical village linked programmes to be conducted with the assent of the head of the institution.

3.5.3 How does the institution encourage the staff to utilize their expertise and available facilities for consultancy services?

The institution encourages the staff to utilize their expertise and available facilities for consultancy services through Farmer’s Service Centre, guest-lectures to neighboring colleges.

3.5.4 List the broad areas and major consultancy services provided by the institution and the revenue generated during the last four years.

All the major consultancy services were provided free of cost to the needful. This can be made income generating for the college through offering some courses to the needful in communication skills and computer skills in an effective manner utilizing the available sufficient ICT infrastructure with successful and effective Checks and Balances.

3.5.5 What is the policy of the institution in sharing the income generated through consultancy (staff involved: Institution) and its use for institutional development?

Taking a cue from the other successful measures and the inputs from the Commissionerate of the Collegiate Education, Andhra Pradesh in the past the just share shall be 60:40 between the staff involved and the Institution respectively and this can be decided through deliberations at the staff meeting.

3.6 Extension Activities and Institutional Social Responsibility (ISR)

3.6.1 How does the institution promote institution-neighborhood-community network and student engagement, contributing to good citizenship, service orientation and holistic development of students?

The college is planning to take up some welfare programmes for the neighbourhood and the community. At present students are engaged in service through NSS programmes. This involvement can be furthered through social welfare programmes, imparting tuitions to weaker sections voluntarily, adopting some students to develop their studies and working at leisure hours in needful areas especially in old-age homes, at banks through “May I Help You”, etc. to inculcate human values among the onlookers and themselves.

3.6.2 What is the Institutional mechanism to track student’s involvement in various social movements/activities which promote citizenship roles?

At present individual records are being maintained by the custodians of various schemes to monitor and track the involvement of students in various social activities. In this regard, there exists the need of maintaining a central record of the monitoring and track of the student’s involvement in various social activities of the college and self.

3.6.3 How does the institution solicit stakeholder perception on the overall performance and quality of the institution?

The college thought that the best method to solicit the perception of the stakeholder is obtain the feedback from the stakeholder and the participant's evaluation of the service programme conducted to be collected by the third party so that it may provide a better opportunity to elicit the impartial information from the stake holder and the participant. In this manner the institution resorts to enhance the quality and the overall performance in the ensuing activities.

3.6.4 How does the institution plan and organize its extension and outreach programmes? Providing the budgetary details for last four years, list the major extension and outreach programmes and their impact on the overall development of students.

It is policy of the government to sanction funds for its extension and outreach programmes. Generally the affiliated University sanctions the annual and special camps budget for the schemes such as NSS, NCC, etc.

3.6.5 How does the institution promote the participation of students and faculty in extension activities including participation in NSS, NCC, YRC and other National/ International agencies?

The institution promotes the participation of the students and faculty in extension activities through motivation, bringing awareness among them through lectures by eminent personalities and philanthropists.

3.6.6 Give details on social surveys, research or extension work (if any) undertaken by the college to ensure social justice and empower students from under- privileged and vulnerable sections of society?

The college played a commendable role to ensure social justice and empower students from under-privileged and vulnerable sections of society. In the college such students from the vulnerable strata of the society have been identified and they were provided some reward to encourage them towards studies from the funds available from the UGC sanctioned funds. Apart from this a blood

grouping camp has been conducted in the college to prepare a database of the students' blood group for donating the blood to the needful. Such an effort has brought the laurels of blood bank of Sri Satya Sai Super Specialties Hospital" to the college as the blood donation has been made many a time to the needful of that hospital. A social survey has also been done by the students of the college in the adjacent village, Saidapuram, and it is to be submitted to the Municipality for proper implementation of the schemes that may result in the development of that backward area. Through such activities the endeavour of the institution is to inculcate sense of social responsibility among the students.

- 3.6.7** Reflecting on objectives and expected outcomes of the extension activities organized by the institution, comment on how they complement students' academic learning experience and specify the values and skills inculcated.

As explained above they inculcate a sense of social responsibility and obligation to extend a helping hand to needful in the society.

- 3.6.8** How does the institution ensure the involvement of the community in its reach out activities and contribute to the community development? Detail on the initiatives of the institution that encourage community participation in its activities?

There is an immense need to further the activities enumerated above in a better manner to achieve better results.

- 3.6.9** Give details on the constructive relationships forged (if any) with other institutions of the locality for working on various outreach and extension activities.

Till date only a few of the faculty forged relationship with Red Cross Society but it has to be carried on in a constructive and better manner to reap real and constructive benefit.

- 3.6.10** Give details of awards received by the institution for extension activities and/contributions to the social/community development during the last four years. Some of the students represented at the National, State and District Level in NSS and they achieved some awards. The details rest with the concerned programme

officers.

--

3.7 Collaboration

3.7.1 How does the institution collaborate and interact with research laboratories, institutes and industry for research activities. Cite examples and benefits accrued of the initiatives - collaborative research, staff exchange, sharing facilities and equipment, research scholarships etc.

No collaboration exists with any research laboratories but interaction existed with DBT, UGC, etc. during the conduct of National Seminar in the college for the purpose of financial and other resources.

3.7.2 Provide details on the MOUs/collaborative arrangements (if any) with institutions of national importance/other universities/industries/Corporate (Corporate entities) etc. and how they have contributed to the development of the institution.

No collaborations with institutions exist as the college is an affiliated one.

3.7.3 Give details (if any) on the industry-institution-community interactions that have contributed to the establishment / creation / up-gradation of academic facilities, student and staff support, infrastructure facilities of the institution viz. laboratories / library / new technology /placement services etc.

No.

3.7.4 Highlighting the names of eminent scientists/participants who contributed to the events, provide details of national and international conferences organized by the college during the last four years.

During the conduct of National Seminar on “Cutting Edge Technologies on Vanya Silks” eminent personalities in the chosen field visited the college.

3.7.5 How many of the linkages/collaborations have actually resulted in formal MoUs and agreements? List out the activities and beneficiaries and cite examples (if any) of the established linkages that enhanced and/or facilitated -

- a) Curriculum development/enrichment
- b) Internship/ On-the-job training
- c) Summer placement
- d) Faculty exchange and professional development
- e) Research
- f) Consultancy
- g) Extension
- h) Publication
- i) Student Placement
- j) Twinning programmes
- k) Introduction of new courses
- l) Student exchange
- m) Any other

No.

3.7.6 Detail on the systemic efforts of the institution in planning, establishing and implementing the initiatives of the linkages/collaborations.

At present no initiative is in vogue and it is the sincere effort of the college to realize the pipe dream to have linkages. It may result in initiating such collaboration after deliberations in the ensuing staff meeting.

Any other relevant information regarding Research, Consultancy and Extension which the college would like to include.

CRITERION IV: INFRASTRUCTURE AND LEARNING RESOURCES

4.1 Physical Facilities

4.1.1 What is the policy of the Institution for creation and enhancement of infrastructure that facilitate effective teaching and learning?

- Institution has UGC reorganization. So far every plan period, the proposal for improvement in facilities is submitted to the UGC and the sanctioned schemes are implemented properly.
- The college accumulated special fees is used to augment lab facilities and buildings
- Special grants are sought from state government, MLA, MP Lads to improve facilities.

4.1.2 Detail the facilities available for

a) Curricular and co-curricular activities—classrooms, technology enabled learning spaces, seminar halls, tutorial spaces, laboratories, botanical garden, Animal house, specialized facilities and equipment for Teaching, learning and research etc.

- I. Class rooms
- II. Seminar halls
- III. E-Class rooms
- IV. Laboratories
- V. Botanical garden
- VI. Library
- VII. Jawahar Knowledge Centre
- VIII. Entry Level Coaching centre
- IX. Career Guidance Cell

b) Extra-curricular activities—sports, outdoor and indoor games, gymnasium, auditorium, NSS, NCC, cultural activities, Public speaking, communication skills development, yoga, health and hygiene etc.

- I. Outdoor and indoor games
- II. NSS
- III. Yoga
- IV. Communication Skills Development
- V. Art of Public Speaking

4.1.3 How does the institution plan and ensure that the available infrastructure is in line with its academic growth and is optimally utilized? Give specific examples of the facilities developed/augmented and the amount spent during the last four years (Enclose the Master Plan of the Institution/ campus and indicate the existing physical infrastructure and the future planned expansions if any).

- While drafting the time table, due care has been taken to ensure optimum utilization of infrastructural facilities.
- It is the centre for the conduct of various university exams by providing all facilities to the examiners and the examinees.
- The institution is a centre for various examinations relating to APPSC and Job recruitment activities.
- Accommodation is provided for the conduct of public activities such as general elections, counting centres, strong rooms for keeping ballot boxes, for organizing district level, zonal level conferences.
- It is a partner ship institution to Dr. B.R. Ambedkar's Open University. Classes for the students of Dr. B.R.A.O.U are conducted in the classrooms of the college on Sundays.
- The library is optimally utilized by extending the working hours from 9:00 AM to 6:00 PM.

4.1.4 How does the institution ensure that the infrastructure facilities meet the requirements of students with physical disabilities?

Necessary care and attention has been taken to provide all facilities to differently abled students. At the time of examination visually disabled students are permitted to sit in a separate hall and a scribe is provided. Physically challenged students are permitted to take the exams in the rooms of ground floor.

4.1.5 Give details on the residential facility and various provisions available within them:

- Hostel Facility – Accommodation available
- Recreational facilities, gymnasium, yoga center, etc.
- Computer facility including access to internet in hostel
- Facilities for medical emergencies
- Library facility in the hostels
- Internet facility
- Recreational facility-common room with audio-visual equipments
- Security

As no hostel exist in the college premises the construction of the same is in pipe line and the efforts to this effect are afoot.

As there exists insufficient basic amenities, the administration is making sincere efforts to make them available to the staff and to the students.

The other facilities available are Canteen and gymnasium.

4.1.6 What are the provisions made available to students and staff in terms of health care on the campus and off the campus?

Regular Health checkups are held to ensure the fitness of the students and medical reimbursement facility is there for staff.

4.1.7 Give details of the Common Facilities available on the campus –spaces for special units like IQAC, Grievance Redressal unit, Women’s Cell, Counseling and Career Guidance, Placement Unit, Health Centre, Canteen, recreational spaces for staff and students, safe drinking water facility, auditorium, etc.

Regarding common facilities available the IQAC has to be brought into action. Women empowerment cell is acting as a catalyst to bring out the innate talent of the women folk to make them self reliant in society.

The counseling and the career guidance cell is actively involved in

counseling and career guidance as a beacon to guide the students toward their constructive and responsible future. The grievance Redressal cell redresses the grievances of the students

4.2 Library as a Learning Resource

4.2.1 Does the library have an Advisory Committee? Specify the composition of such a committee. What significant initiatives have been implemented by the committee to render the library, student/user friendly?

Yes, Library has an advisory committee which approves the budget allocations for the purchase of books, journals, magazines and reference books. The committee comprises with the Principal as the Chairperson, Librarian, senior faculty members and two student representatives. The following initiatives have been implanted by the committee

- Open Access System is adapted to staff members.
- Library and reading room are kept open from 9:00 AM to 5:30 PM. On all working days and attendants will look after the books, journals and periodicals.
- Books are issued to the students and staff which they have to return within 15 days.
- Book bank books are issued to the students and they may use those books till the examinations.
- Books are issued only on production of identity cards.
- Students and staff members have to sign in the register provided at the entrance.
- Library is a help line centre.

4.2.2 Provide details of the following:

- Total area of the library (in Sq. Mts.)
120 sq. mts
- Total seating capacity
40
- Working hours (on working days, on holidays, before examination days,

during examination days, during vacation)

9:00 AM to 6:30 PM

- Layout of the library (individual reading space is provided) - Yes.

4.2.3 How does the library ensure purchase and use of current titles, print and e-journals and other reading materials? Specify the amount spent on procuring new books, journals and e-resources during the last four years.

Library holdings	Year -1		Year - 2		Year - 3		Year - 4	
	Number	Total Cost	Number	Total Cost	Number	Total Cost	Number	Total Cost
Text books	-	17140		78242		45040		52250
Reference	-	-	-	-	-	-	-	-

Library holdings	Year -1		Year - 2		Year - 3		Year - 4	
	Number	Total Cost	Number	Total Cost	Number	Total Cost	Number	Total Cost
Journals Periodicals	-	-	-	-	5	4416	15	29381
e-resources	-	-	-	-	--	-	-	-
Any other (specify)	-	-	-	-	-	-	-	-

4.2.4 Provide details on the ICT and other tools deployed to provide maximum access to the library collection?

- Electronic Resource Management package for e-journals: Is ordered
- Library Website: -
- In-house/remote access to e-publications: -
- Library automation: In progress
- Total number of computers for public access: Three (3)
- Total numbers of printers for public access: -
- Internet band width/speed : 1 gb(GB)
- Institutional Repository: No
- Content management system for e-learning: -
- Participation in Resource sharing networks/consortia (like Inflibnet) : Is

Ordered

- OPAC: -

4.2.5 Provide details on the following items:

- Average number of walk-ins: 120
- Average number of books issued/returned: 105
- Ratio of library books to students enrolled: 1: 18
- Average number of books added during last three years: -
- Average number of login to opac (OPAC): -
- Average number of login to e-resources: -
- Average number of e-resources downloaded/printed: -
- Number of information literacy trainings organized: 2
- Details of “weeding out” of books and other materials: -

4.2.6 Give details of the specialized services provided by the library

- Manuscripts: --
- Reference: 5262
- Reprography: --
- ILL (Inter Library Loan Service): --
- Information deployment and notification (Information Deployment and Notification): --
- Download: --
- Printing: --
- Reading list/ Bibliography compilation: --
- In-house/remote access to e-resources: --
- User Orientation and awareness: 2
- Assistance in searching Databases: Yes
- INFLIBNET/IUC facilities: Yes, is ordered

4.2.7 Enumerate on the support provided by the Library staff to the students and teachers of the college.

Generally the librarian and library attendant helps either the staff or the students if they require any help in tracing out any available book or journal or

magazine.

4.2.8 What are the special facilities offered by the library to the visually/physically challenged persons? Give details.

Library staff assists them when ever needed.

4.2.9 Does the library get the feedback from its users? If yes, how is it analysed and used for improving the library services. (What strategies are deployed by the Library to collect feedback from users? How is the feedback analysed and used for further improvement of the library services?)

Yes, the feed back is analysed by a committee of senior lecturers and if there are any considerable points to amend the will be carried out thence forth.

4.3 IT Infrastructure

4.3.1 Give details on the computing facility available (hardware and software) at the institution.

- Number of computers with Configuration (provide actual number with Exact configuration of each available system) : 131
- Computer-student ratio: 1:11
- Stand alone facility: -
- LAN facility: Available
- Licensed software: Yes, using Licensed Software
- Number of nodes/ computers with Internet facility: 14
- Any other: -

4.3.2 Detail on the computer and internet facility made available to the faculty and students on the campus and off-campus?

All 14 internet points are accessible both to the staff and the students.

4.3.3 What are the institutional plans and strategies for deploying and upgrading the IT infrastructure and associated facilities?

The institution plans to upgrade IT infrastructure and associated facilities

enormously.

- 4.3.4** Provide details on the provision made in the annual budget for procurement, up gradation, deployment and maintenance of the computers and their accessories in the institution (Year wise for last four years)

From the Special fee the budget can be allotted to the departments based on their requirement.

- 4.3.5** How does the institution facilitate extensive use of ICT resources including development and use of computer-aided teaching/ learning materials by its staff and students?

An ICT Class room is separately established in addition to the ELL Lab. These two labs are allotted to any subject lecturers if they wish to utilize ITC resources.

- 4.3.6** Elaborate giving suitable examples on how the learning activities and technologies deployed (access to on-line teaching - learning resources, independent learning, ICT enabled classrooms/learning spaces etc.) by the institution place the student at the centre of teaching-learning process and render the role of a facilitator for the teacher.

Because of the ICT enabled class rooms more student centered activity is taking place and the teacher is rendering the role of a facilitator.

- 4.3.7** Does the Institution avail of the National Knowledge Network connectivity directly or through the affiliating university? If so, what are the services availed of?

4.4 Maintenance of Campus Facilities

- 4.4.1** How does the institution ensure optimal allocation and utilization of the available financial resources for maintenance and upkeep of the following facilities (substantiate your statements by providing details of budget allocated during last

four years)?

a.	Building	Rs. 4,00,000-00
b.	Furniture	Rs.2,00,000-00
c.	Equipment	Rs. 196000 was allotted by the UGC for maintenance of equipment during 2010-11.
d.	Computers	Rs.2,00,000-00
e.	Vehicles	-
f.	Any other	-

4.4.2 What are the institutional mechanisms for maintenance and upkeep of the infrastructure, facilities and equipment of the college?

A construction committee is constituted with the senior lecturers and they look after and suggest the required facilities, infrastructure, equipment and recommend for any repairs for the college.

4.4.3 How and with what frequency does the institute take up calibration and other precision measures for the equipment/instruments?

Based on the financial sources available the frequency depends.

4.4.4 What are the major steps taken for location, upkeep and maintenance of sensitive equipment (voltage fluctuations, constant supply of water etc.)?

Periodical checkups are conducted.

Any other relevant information regarding Infrastructure and Learning Resources which the college would like to include.

With the financial assistance of teaching faculty a vehicle shed worth Rs.2,00,000 was built in college premises.

CRITERION V: STUDENT SUPPORT AND PROGRESSION

5.1 Student Mentoring and Support

5.1.1 Does the institution publish its updated prospectus/handbook annually? If ‘Yes’, what is the information provided to students through these documents and how does the institution ensure its commitment and accountability?

Yes, updating of latest information regarding courses, infrastructure and data of the college is included.

5.1.2 Specify the type, number and amount of institutional scholarships/free ships given to the students during the last four years and whether the financial aid was available and disbursed on time?

- B.C. Scholarships
- S.C & S.T Scholarships
- Minority Scholarships Etc.
- Poor boys fund is disbursed every year.

5.1.3 What percentage of students receives financial assistance from state government, central government and other national agencies?

Nearly 80 % of the students receive.

5.1.4 What are the specific support services/facilities available for Students from SC/ST, OBC and economically weaker sections Students with physical disabilities overseas students to participate in various competitions/National and International Medical assistance to students: health centre, health insurance etc. Organizing coaching classes for competitive exams Skill development (spoken English, computer literacy, etc.) Support for “slow learners” Exposures of students to other institution of higher learning/Corporate/business house etc. Publication of student magazines

Through the Jawahar Knowledge Centre, Career Guidance Cell ,Entry Level Coaching and remedial coaching special training will be given to SC,ST,BC & OC students in,

- Spoken English,
- Arithmetic & Reasoning,
- General Knowledge,
- Free Coaching for all competitive examinations,
- PG Entrance,
- B.Ed, D.Ed Entrances ,
- Remedial coaching for the slow learners etc.

For the differently abled candidates free coaching in JKC will be given. The fee will be born by the institution. During examination time ground floor rooms and scribes will be provided with.

- 5.1.5** Describe the efforts made by the institution to facilitate entrepreneurial skills, among the students and the impact of the efforts.

The faculty of department of commerce regularly conducts interactive sessions to develop entrepreneur skills by providing information and material on self employment opportunities.

- 5.1.6** Enumerate the policies and strategies of the institution which promote participation of students in extracurricular and co-curricular activities such as sports, games, Quiz competitions, debate and discussions, cultural activities etc.,

- Additional academic support, flexibility in examinations
- Special dietary requirements, sports uniform and materials
- Any other

In the matters of attendance academic support is provided. Regarding flexibility in the examination we are not vested with any power as the university decides the examination schedule.

Regular quiz, seminars are conducted, inter collegiate competitions are hosted.

We invite doctors from Govt Hospital periodically and prescribe the dietary requirements to the students. As a gesture from the college we supply iron

tablets. Regarding sports uniform we approach the sponsors.

5.1.7 Enumerating on the support and guidance provided to the students in preparing for the competitive exams, give details on the number of students appeared and qualified in various competitive exams such as UGC-CSIR- NET, UGC-NET, SLET, ATE/CAT/GRE/TOFEL/GMAT/Central/State services, Defense, Civil Services, etc.

Career Guidance and Placement Services unit and Jawahar Knowledge Centre facilitate and support students for appearing and qualifying in competitive examinations.

Mentors advise the students to prepare for the competitive exams of State/Central/Banking and other services.

The institution offers only UG Courses hence the Students of U G are not eligible to write the examinations mentioned above.

Notifications of reputed agencies are posted on the college notice board, and the same are circulated among the students. The library subscribes to books and journals that are useful in the preparation for competitive examinations.

The following are the details of students taken coaching, appeared and qualified in various competitive examinations during 2011-12 & 2012-13.

S. No.	Particulars of Competitive Examinations	No. of students taken coaching	No. of students appeared	No. of students qualified
1	ICET	80	75	50
2	SKU CET/SVUCET	200	182	120
3	Examinations conducted by			
	a) Nationalized Banks	100	85	36
	b) LIC/NAC/GIC etc.	40	25	15
	c) RRB	80	75	15
	d) APPSC	150	82	16
	e) DSC	80	78	43
	f) Police recruitment/CDS	120	118	56

5.1.8 What type of counseling services are made available to the students (academic, personal, career, psycho-social etc.)

- Career Guidance and Counseling Cell of the college provides awareness to the students through proper counseling and information on various job opportunities. The cell also provides required information to the needy students to evaluate and strengthen opportunities provided by placement cells.
- The posters, notifications received from various organizations, institutions and universities are displayed regularly on the notice board of the library.
- Jawahar Knowledge Centre was established in 2006 in the college to train the students in employment skills and create opportunities for placements.

5.1.9 Does the institution have a structured mechanism for career guidance and placement of its students? If 'yes', detail on the services provided to help students identify job opportunities and prepare themselves for interview and the percentage of students selected during campus interviews by different employers (list the employers and the programmes).

Yes List will be provided.

5.1.10 Does the institution have a student grievance redressal cell? If yes, list (if any)

The grievances reported and redressed during the last four years.

Yes, the functions of Grievance Redressal Cell are:

- To document the grievances and to discuss with the people concerned on the problems reported either in writing or orally and remedial measures are suggested to the authorities concerned to redress the problem.

5.1.11 What are the institutional provisions for resolving issues pertaining to sexual harassment?

Women's Cell established in the college and cell attends to the sensitive issues faced by women. The cell also hears and suggests measures of the

grievances, if any faced by the women staff.

5.1.12 Is there an anti-ragging committee? How many instances (if any) have been reported during the last four years and what action has been taken on these?

Yes, committee is there, no case has been reported.

5.1.13 Enumerate the welfare schemes made available to students by the institution.

- Career Guidance and Counseling unit of the college has been guiding and counseling the students regularly and organizing seminars and recruitment melas.
- Jawahar Knowledge Centre was established in the college for training the students in employment skills to get campus placements in MNCs and other companies.
- Concessional Bus Passes are provided to all the students who commute from the surrounding places.
- Free coaching for all the competitive examinations is given.

5.1.14 Does the institution have a registered Alumni Association? If 'yes', what are its Activities and major contributions for institutional, academic and infrastructure development?

Yes, a registered alumni association has been in existence in the college Since 2010.

Current office bearers:

President	: Dr P. Srinivasa Naidu.
Vice President	: Sri S. L. V. Sreenivasa Babu (USA).
Organizing Secretary	: Sri R. Sreeramulu
Secretary	: D. Adinarayana
Joint Secretary & Treasurer	: K. Sreenivasulu

Executive Members:

Dr D. Adeppa	: Lecturer in Economics
Dr. B. Sankar	: Lecturer in Economics

Activities during 2007-13:

The association promotes academic excellence by providing necessary Suggestions.

- Provides financial assistance to the development of the college,
- Offer suggestions for overall development of the college,
- Guiding the students in academic and employment opportunities.
- Helping students who are financially poor. T
- They also provide feedback to the college offering their suggestions.

5.2 Student Progression

5.2.1 Providing the percentage of students progressing to higher education or employment (for the last four batches) highlight the trends observed.

Student progression	%
UG to PG	40
PG to M.Phil.	-
PG to Ph.D.	-
Employed	
• Campus selection	3
• Other than campus recruitment	30

5.2.2 Provide details of the programme wise pass percentage and completion rate for the last four years (cohort wise/batch wise as stipulated by the university)?
Furnish programme-wise details in comparison with that of the previous.

Performance of the same institution and that of the Colleges of the affiliating university within the city/district.

Year	Programme	University average of Pass %	STSN GDC Kadiri.	Other colleges Pass %
2010-11	BA	60.3	33.15	59.7
2011-12	BA	59.3	48.74	48.7
2012-13	BA	57.8	50.72	53.9
2013-14	BA	52.7	27.58	50.1
2014-15	BA	51.9	43	50.7

Year	Programme	University average of Pass &	STSN GDC Kadiri.	Other colleges Pass %
2010-11	B.Sc.	61.9	43.86	60.3
2011-12	B.Sc.	60.8	53.52	62.4
2012-13	B.Sc.	58.7	63.66	60.3
2013-14	B.Sc.	58.2	56.30	54.8
2014-15	B.Sc.	52.7	58	51.5

Year	Programme	University average of Pass &	STSN GDC Kadiri.	Other colleges Pass %
2010-11	B.Com.	39.2	46.81	38.7
2011-12	B.Com.	40.1	30.68	34.1
2012-13	B.Com.	42.3	41.81	41.8
2013-14	B.Com.	38.9	28	40.2
2014-15	B.Com.	33.8	21.20	31.3

5.2.3 How does the institution facilitate student progression to higher level of education and/or towards employment?

- Career Guidance and Counseling Cell of the college provides awareness to the students through proper counseling and information on various job opportunities. The cell also provides required information to the needy students to evaluate and strengthen opportunities provided by placement cells.
- The posters, notifications received from various organizations, institutions and universities are displayed regularly on the notice board of the library.
- Jawahar Knowledge Centre was established in the college to train the students in employment skills and create opportunities for placements.
- Through entry level coaching we are providing the PG Entrance coaching to the students.

5.2.4 Enumerate the special support provided to students who are at risk of failure and drop out?

- Bridge courses are conducted soon after admissions.
- Special counseling sessions are arranged.
- Special remedial coaching is given.
- Their talent in sports and cultural activities are identified and special coaching is provided for them.
- Measures are taken to control drop out rates.
- Slow learners are given tutorials and remedial coaching in the subjects they are lagging behind.

5.3 Student Participation and Activities

5.3.1 List the range of sports, games, cultural and other extracurricular activities available to students. Provide details of participation and program calendar.

- The Department of Physical Education sensitizes the students regarding the advantages of sports and games in promoting health and fitness and in securing employment and allow the students to participate in
 - Cricket
 - Football
 - Badminton
 - Hockey
 - Table Tennis
 - Kabadi etc.
- Our college organized S.K. University II Phase (Men) Inter- Collegiate Tournament during the academic year 2008-09.

5.3.2 Furnish the details of major student achievements in co-curricular, extracurricular and cultural activities at different levels: University / State / Zonal / National / International, etc. for the previous four years.

Our college organized S.K. University II Phase (Men) Inter- Collegiate Tournament during the academic year 2008-09.

5.3.3 How does the college seek and use data and feedback from its graduates and employers, to improve the performance and quality of the institutional provisions?

Yes, Feedback is obtained when they visit the institution and in the alumni association meeting and care is taken to implement the suggestions.

5.3.4 How does the college involve and encourage students to publish materials like catalogues, wall magazines, college magazine, and other material? List the publications/materials brought out by the students during the previous four academic sessions.

- Students collect the news paper clippings of day to day events and display them in the Today's News column in the respective notice boards of the department.
- We take articles from students to be published in college magazine.

5.3.5 Does the college have a Student Council or any similar body? Give details on its selection, constitution, activities and funding.

Yes, The College has a Student Union and the details are as follows.

S.No.	Name and Designation	Post
1	Dr P. Srinivasa Naidu, Principal	President
2	M. Ramachandra, Lec. in Chemistry	Vice President
3	D. Narasimha Rao, Lec .in Commerce	Member
4	R. Sreeramulu, Lec. In Commerce	Member

Students on the basis of merit are nominated to the union. The staff Council of the college monitors the activities of the students union.

Students Union Activities are:

- Monitoring the academic activities of the college.
- Involving the students in various extension activities.
- Participating in college development programmes.
- Assisting the staff in organizing various cultural activities of the college.
- Funding of Rs. 11,000/- special fee has been earmarked for the academic

year 2014-15.

5.3.6 Give details of various academic and administrative bodies that have student representatives on them.

Yes, the principal and in-charges of the departments monitor the academic, administration and student affairs in the college. Various committees constituted are as follows:

Academic Committees

- Students' Union Committee
- Discipline Committee
- Sports – Games Committee
- NSS Committee
- Cultural Committee
- Library Advisory Committee
- Career Guidance and Counseling Cell
- College Calendar and Hand Book Committee
- Women Development Cell
- Grievance and Redressal Cell

Administration Committees

- College Building Committee

Other Committees

- Youth Red Cross
- Consumer Club
- Eco Club
- English Language Club
- Anti-Ragging Cell
- Red-Ribbon Club

5.3.7 How does the institution network and collaborate with the Alumni and former faculty of the Institution.

Yes, Feedback is obtained when they visit the institution and in the alumni association meeting. A registered alumni association has been in existence in the college since 2010.

Current office bearers:

President	: Dr P. Srinivasa Naidu, Principal.
Vice President	: Sri S. L. V. Sreenivasa Babu (USA).
Organizing Secretary	: Sri R. Sreeramulu
Secretary	: Sri. D. Adinarayana.
Joint Secretary & Treasurer	: Sri K. Sreenivasulu

Executive Members:

Dr D. Adeppa	: Lecturer in Economics
Dr. B. Sankar	: Lecturer in Economics

Activities during 2007-15.

The association promotes academic excellence by providing necessary suggestions.

- Provides financial assistance to the development of the college,
- Offer suggestions for overall development of the college,
- Guiding the students in academic and employment opportunities.
- Helping students who are financially poor.
- They also provide feedback to the college offering their suggestions.

Any other relevant information regarding Student Support and Progression which the college would like to include.

CRITERION VI: GOVERNANCE, LEADERSHIP AND MANAGEMENT

6.1 Institutional Vision and Leadership

6.1.1 State the vision and mission of the Institution and enumerate on how the mission statement defines the institution's distinctive characteristics in terms of addressing the needs of the society, the students it seeks to serve, institution's traditions and value orientations, vision for the future, etc.?

Motto

“Vidyaya Amrutham Asnute”

[Through Knowledge, One Attains Immortality]

Vision

To establish a just and humane society by imparting quality education, ethical values, value-added knowledge with global standards to the down-trodden sections at affordable costs.

Mission

- To identify, institutionalize and implement some of the “Best Practices” in vogue in the top NAAC assessed institutions.
- To equip the students with global skills so as to make them to meet the demands of the society.
- To inculcate human values.
- To train the stake holders in restricted curriculum to strengthen job opportunities.
- To start job-oriented certificate/diploma courses besides conventional courses to instill self-confidence in the students.

Objectives

- To redesign evaluation tools to test the creativity of the students.
- To have linkages with industry and provide students on job training.
- To train students with a rural background in communication skills in English.

- To encourage faculty to take up innovative research projects.
- To make faculty accountable through student-charter.

(a) The College is striving hard to reflect the vision and mission statement to achieve the objectives of higher education by introducing the following :

Academics

- Research guidance and other facilities like giving coaching for P.G Entrance and other competitive examinations in all departments.

Starting of Restructured courses

- B.Com. Computer Applications
- B.Sc. MPCs (Mathematics, Physics, Computer Science)

Other measures

- Use of ICT in teaching-Learning activity.
- Students are encouraged to take up small project works in their respective disciplines to inculcate the idea of research
- Availability and accessibility of infrastructural facilities.
- Introduction of 'Earn while You Learn' programme to the students.
- Establishment of Jawahar Knowledge Centre (JKC) for training the students on employable skills to get placements in reputed companies.
- Career Guidance Cell to provide opportunities for pursuing higher education and placements.
- Indian Heritage & Culture, Science & Civilization and Environmental Studies to promote social harmony and Indianness.
- NSS units, Women Development Cell and Eco Club are active in rendering service.
- Linkage with District Resource Centre (DRC).
- Women Development Cell is established in the college to enlighten the students on personality development. It also organized training programmes on "Women Empowerment".
- Alumni Association to promote academic excellence and to provide

financial assistance.

- College organizes various cultural activities on music, dance and drama to promote cultural heritage.

6.1.2 What is the role of top management, Principal and Faculty in design and Implementation of its quality policy and plans?

The Management of Government Colleges in Andhra Pradesh is vested with the Commissioner of Collegiate Education, Government of Andhra Pradesh, Hyderabad. The Commissioner guides and directs the colleges periodically on academic matters.

- Submission of curricular plans and synopsis of the topics and teaching dairies are made compulsory.
- Teachers with academic excellence are rewarded.
- Feedback is obtained from the head of the institution.
- Constitution of IQAC.

6.1.3 What is the involvement of the leadership in ensuring :

- The policy statements and action plans for fulfillment of the stated mission.
- Formulation of action plans for all operations and incorporation of the same into the institutional strategic plan.
- Interaction with stakeholders.
- Proper support for policy and planning through need analysis research inputs and consultations with the stakeholders.
- Reinforcing the culture of excellence.
- Champion organizational change.

The Head of the Institution, the Principal of the College, at the behest of the department of Higher Education, ensures that the staff knows their responsibilities and the Principal communicates to the staff at the beginning of the academic year by convening a meeting of the teaching staff. The principal communicates the responsibilities through departmental review meetings and staff

council meetings.

6.1.4 What are the procedures adopted by the institution to monitor and evaluate policies and plans of the institution for effective implementation and improvement from time to time?

The head of the institution circulates a self-appraisal form to each staff member to get the feedback on students' performance; whereas the student's assessment of the quality of teaching reveals the quality of education imparted by the Institution. These two yardsticks supply the required information to the Head of the Institution as well as to the department for reviewing the activities of the institution.

6.1.5 Give details of the academic leadership provided to the faculty by the top management?

- The Head of the Institution is the academic leader of the college.
- The Head of the Institution is the key functionary.
- He governs academic, administrative, financial, developmental, community related and student oriented activities.

Academic matters:

- The primary responsibility of the head of the institution is proper conduct of academic functioning of the college because the very purpose of a college is to provide education to the students. He will ensure systematic imparting of education for achieving concrete learning.
- The principal will assess the needs and demands of the teachers and experts in starting new UG courses.
- He conducts meetings periodically with the staff council, and entire teaching staff and with student representatives.
- He convenes a meeting with the staff at the very beginning of the academic year to review the activities and performance of the previous academic year and to finalize the plan of action for the current academic year.
- The principal ensures an effective teaching-learning activity. He himself

acts as a role-model.

- As the academic leader, he supervises the implementation of teaching-learning practices.
- The head of the institution acts as a Chairman for Internal Quality Assurance Committee (IQAC) and Students' Union.

Administrative matters

- The head of the institution is the Chief Administrator of the college.
- As the Chief Administrator of the college, the principal deals with day-to-day administration, academic activity and supervision of teaching and non-teaching staff, their service matters, and all matters related to students. He reports these matters to the Commissioner of Collegiate Education, AP, Hyderabad, implements the instructions, liaisons with Regional Joint Director of Collegiate Education, Kadapa, matters related to University and liaisons with University officials.
- The Head of the Institution sanctions leave, draws and disburses the salary and other monetary benefits to the staff.
- Principal acts as President of College Planning and Development Council (CPDC) to create suitable environment for community participation in the College Development and also to mobilize funds for the development activities of the college.
- The principal appoints guest faculty in the vacant posts.

Financial matters

- The principal as the Head of the institution is delegated with financial powers to administer the college. He is held responsible and accountable in financial matters. He shall be thorough with the fundamental rules, regulations and procedures related to service matters.
- Principal is the competent authority to sanction the claims of Group Insurance Scheme (GIS) and Family Benefit Fund (FBF) accumulations in respect of the employees working under him.
- He is the ex-officio Chairperson for the following committees.
 - Committee for purchasing equipment, glassware and chemicals.
 - Purchasing Library books.

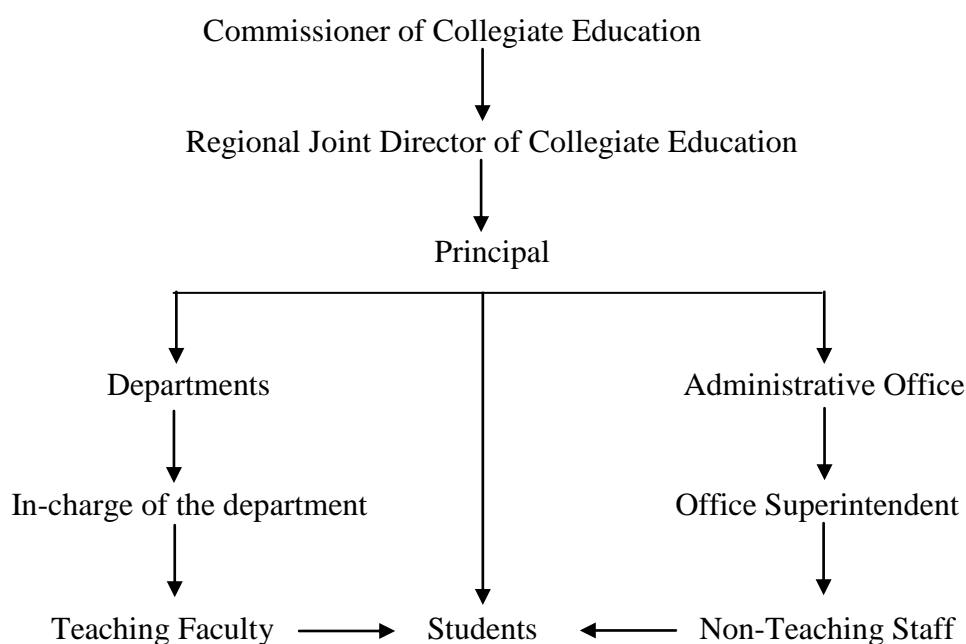
- Purchasing material for Sports and Games
- Principal maintains a Bank Account in one of the local scheduled banks.

6.1.6 How does the college groom leadership at various levels?

By constituting various committees for both the staff and the students and selecting suitable personnel to the various positions of the committees the college grooms its leadership.

6.1.7 How does the college delegate authority and provide operational autonomy to the departments/units of the institution and work towards decentralized governance system?

Organizational Structure



Details of the academic and administrative bodies of the institution.

The head of the institution as well as in-charge of the departments monitor the academic, administrative and students matters in the college.

Committee	Coordinator
College Planning and Development Committee (CPDC)	Dr. P. Srinivasa Naidu
Internal Quality Assurance Cell (IQAC) & Academic Coordinator	Dr. CH. Appiya Chinnamma

NAAC	Dr. R. Hyderali
Students Union	Sri M. Ramachandra
UGC Affairs Committee	Dr. K. Mahendra Rao
JKC and Placement Cell	Dr. R. Hyderali
District Resource Centre	Sri. R. Sriramulu
Career Guidance and Counseling Cell	Dr. S.Smitha
Alumni Committee	Sri. R. Sriramulu
Research Committee	Dr. S.Smitha
Women's Cell	Smt. K. Chandra
Grievance Redressal Cell & Anti-Ragging Committee	Dr. CH. Appiya Chinnamma
Discipline Committee	Sri. D. Narasimha Rao
Attendance	Dr. K. Chennakesava Reddy
Scholarships	Sri. B. Ramasubba Reddy
Sports and Games Committee	Sri. K. Srinivasa Prasad
NSS and Red Cross Committee	Sri. K. Srinivasulu & Sri. V. Raj Mohammad
Cultural Affairs Committee	Dr. K. Chennakesava Reddy
Time Table Committee	Sri. M. Ramachandra
Science Association	Smt. V. Leelavathi
Commerce Association	Sri D. Narasimha Rao
Humanities Association	Dr. R. Hyderali
Staff Club	Dr K. Chennakesava Reddy
Consumer Club	Sri D. Narasimha Rao
Eco Club	Smt. K. Sreedevi
English Language Club	Dr. R. Hyderali
Library Advisory Committee	Dr. K. Mahendra Rao
Audio-visual Committee/ MANA T V	Sri. D. Adinarayana

The above committees meet at regular intervals and will monitor and assist for implementation of instructions/suggestions from all corners for effective functioning of the institution.

Details of the meetings held and decisions taken by these bodies during the last five years.

Year	Date of meeting	Important decision taken
Staff Council		
2008-09	03-09-2009	1) To construct a water tank to supply protected water.
2009-10	02-10-2010	To add additional facilities in all labs
	18-01-2010	To establish a separate computer lab for commerce students
	13-02-2010	To purchase computers for departments and to provide internet connectivity

2010-11	03-11-2011	To request the staff members to conduct seminars, workshops and undertake minor research projects by getting financial assistance from UGC in view of re-accreditation
	03-02-2011	Installation of tables and chairs in commerce computer lab
2011-12	17-09-2012	To submit an application to the UGC for sanction of additional classrooms
	05-11-2012	To strengthen the career guidance cell and to subscribe to journals, magazines by departments in order to promote knowledge base of students.
2012-13	20-10-2013	To renovate office room by providing systems, printers and furniture.
	27-10-2013	To utilize the UGC 11 th plan funds
2013-14	13-11-2014	To prepare all records and documents in view of the ensuing NAAC re-accreditation programme.
College Planning and Development Committee (CPDC)		
2008-09	17-09-2009	To have internet connection to the college. To provide split AC facility for computer lab

2009-10	17-06-2010	To construct two classrooms on the 1 st floor in Arts wing with MP LAD funds.
	05-10-2011	To arrest the water leakages in the Arts wing and a Tissue culture lab.
2010-11	30-09-2011	To have a separate protected cycle shed for women students.
2011-12	09-10-206	To purchase ceiling fans, Godrej almirahs, book shelves, computers, iron dual desks, etc. from additional special fees of the restructured courses.
2012-13	15-02-2008	To repair the broken furniture.
2013-14	14-08-2008	Electrification of all class rooms in order to use OHP / LCD projector.
Research Committee		
2009-10	17-08-2009	A Research Committee was constituted.
Extension Activities Committee (NSS, Consumer Club, etc.)		
2008-09	01-12-2006	Observed World Aids Awareness Day.
2009-10	29-10-2007	A rally was organized by NSS volunteer in commemoration of 150 years of the 1857 Sipoy mutiny.
2010-11	14-11-2008	Adoloscent Quiz at District Level was conducted by NSS
2011-12	01-12-2009	Observed World Aids Awareness Day.
2012-13	11-10-2010	Volunteers have observed Bharatha Rathna Moulana Abul Kalam Azad Jayanthi as National Education Day.
2013-14	23-01-2011	In view of the Republic Day 45 volunteers have donated blood to Govt. Head Quarters Hospital, Chittoor
Examinations Committee		
An examination committee was constituted with 06 faculty members to conduct university, APPSC and other examinations.		

6.1.8 Does the college promote a culture of participative management? If 'yes', indicate the levels of participative management.

The Management of Government Colleges in Andhra Pradesh is vested with the Commissioner of Collegiate Education, Government of Andhra Pradesh, Hyderabad. The Commissioner guides and directs the colleges periodically on academic matters.

6.2 Strategy Development and Deployment

6.2.1 Does the Institution have a formally stated quality policy? How is it developed, driven, deployed and reviewed?

There is constant effort in the institution to develop a strategy to enhance quality of teaching and wholesome development of the students.

Structure of the faculty organization gives a ample scope for continuous up gradation of inputs. Senior most among the faculty is made in-charge of the department. Regular inter departmental meetings are held and the principal actively monitors the functioning of the departments on the recommendations of the department heads. Books and needed equipment are purchased.

Departmental Committee: Periodical reviews on the performance of the staff as well as students in and outside the classroom paves the way for the suggestions on academic matters.

Staff Council: The staff council consisting of senior faculty meets once in a month to take appropriate decisions on budgets, administration, academic activities like seminars etc.

Internal Quality Assurance Cell: IQAC plays significant role in quality sustaining and quality enhancement. The quality consciousness among all the stake-holders is promoted by the committee. Meetings to discuss and evaluate various academic matters periodically are conducted by it.

Grievance Redressal Cell: This cell receives the complaints from the students and discusses them at the appropriate forums and suggests remedial measures.

The students have easy access to the principal, the mentor, the lecturer in-charge (SMH) to discuss their problems. All the grievances are recorded and necessary measures are initiated expeditiously.

Career Guidance and Placement Cell: This cell helps students to get information about the career opportunities and also organizes campus recruitment drives. It helps students to choose right careers. Also arranges lectures on personality development and career development.

Research Committee: consisting of senior faculty the committee encourages and monitors research activity in the college. Also the staff is given encouragement and support for going for minor research projects.

6.2.2 Does the Institute have a perspective plan for development? If so, give the aspects considered for inclusion in the plan.

- The institution submits a perspective institutional plan before the beginning of every academic year to the CCE, Hyderabad, giving an overview of the activities to be undertaken by the institution. At the institutional level every department prepares an action plan where the academic programmes such as organizing lectures, seminars and other related curricular activities are planned.
- In the overall planning process, the teacher takes into account the experience of earlier batches of students as well as suggestions from the administrative staff. As the institution is primarily an academic institution, teachers play a major role in the planning process and advice the leader of the institution who also happens to be the chief administrator.

6.2.3 Describe the internal organizational structure and decision making processes.

The following committees actively participate in the academic curriculum and for the smooth conduction of academic year.

1. Academic Management : Principal and Staff Council
2. Finance : Principal and Administrative Officer
3. Infrastructure : Principal and CPDC

- | | |
|-------------------------|---------------------------------------|
| 4. Faculty | : Principal and Staff Council |
| 5. Research | : Principal and Doctorate faculty |
| 6. Extension activities | : Principal and Faculty. |
| 7. Linkages | : Principal, DRC Coordinator |
| 8. Examination | : Principal and Examination in-charge |

6.2.4 Give a broad description of the quality improvement strategies of the institution for each of the following

• **Teaching & Learning**

- By introducing new courses, certificate courses, well qualified staff, computer facilities, good infrastructure and hostel facilities.
- Academic inputs like qualified staff, library, well-equipped laboratories, computer centre, Jawahar Knowledge Centre (JKC), English Language Lab (ELL), Cultural meets, Community Oriented Programmes through NSS.
- The faculty maintains close rapport with the students and helps them by solving their problems.

• **Research & Development**

- A UGC committee is constituted to encourage and monitor research activity both by the staff and the students.

• **Community engagement**

- collaboration with the Forest Department volunteers of the NSS planted 1000 saplings on the campus to promote afforestation
- The NSS units of the college adopted a nearby locality Yarradoddi village for all-round development of the area.
- The NSS volunteers bring out awareness on environmental pollution, nutrition, health and hygiene. These camps are conducted every year.
- The NSS units organize blood donation camps every year and considerable number of blood units are donated.
- The students are encouraged to visit orphanages, old-age homes and hospitals to extend community services.
- Students collect donations in the form of clothes, rice, utensils etc. from

the public to help the victims of floods and natural disasters.

- Encourages the stake-holders to participate in the campaigns and competitions organized by the district authorities or well known recognized institutions like Jana Vignana Vedika.(Aids, Population, Conservation of energy)
 - The faculty, students, NSS units, Teacher's Association establishes rapport with the community based organizations, neighborhood communities to identify their needs. They conduct surveys and organize programmes.
 - NSS Special programme was conducted at Yarradoddi in Kadiri Mandal from 28-12-2007 to 06-01-2008 in order to train the students in community service and leadership.
 - The volunteers of the NSS Planted 100 Saplings on the campus to promote afforestation
 - Under NSS, a special programme was conducted at Gangannagaripalli village in Kummaravandlapalli panchayat, from 14-09-2009 to 20-09-2009 and again in 2011-12.
 - The college in association with Red Cross Society Blood Bank conducted Blood Donation Camps in the college on 24-01-2008 and in 28-12-2012 in which 102 and 98 students donated blood.
 - World's HIV/AIDS Day is observed every year on 1st December by organizing a rally to create awareness on AIDS.
 - Faculty and students actively participate at community level programmes.
 - Students and faculty jointly organize HIV/AIDS rallies and peace marches in the town. A mammoth rally was taken out on the occasion of the world AIDS Day on first December of every year.
 - Eco Club is established in the college to create awareness students on environmental consciousness. The volunteers visit slum areas to create awareness about cleanliness and pollution to the slum dwellers.
- **Human resource management**
 - Optimum utilization of human resources is planned and implemented. Best of the capacities among the faculty and the student is identified and needed platforms are created to exhibit their talents.

- **Industry interaction**

- Department of Chemistry and Sericulture have tie ups with the local industry. Further to initiate more interaction efforts are being made.

6.2.5 How does the Head of the institution ensure that adequate information (from feedback and personal contacts etc.) is available for the top management and the stakeholders, to review the activities of the institution?

The head of the institution circulates a self-appraisal form to each staff member to get the feedback on students' performance; whereas the student's assessment of the quality of teaching reveals the quality of education imparted by the Institution. These two yardsticks supply the required information to the Head of the Institution as well as to the department for reviewing the activities of the institution. Periodic visits by the representatives of the CCE is organized and their suggestions are meticulously followed.

6.2.6 How does the management encourage and support involvement of the staff in improving the effectiveness and efficiency of the institutional processes?

- The principal conducts regular staff meetings to review the academic and administrative matters.
- The principal also holds a meeting with the staff council and take their opinions in the form of resolution in case of issues related to curricular, co-curricular and extra-curricular activities that may arise during the functioning of the college.

The major issues discussed during the last meeting were as follows:

Staff Council Meeting

S. No.	Meeting	Major decisions taken
1	03-11-2013	To request the staff members to conduct seminars, workshops and undertake minor research projects by getting financial assistance from UGC in view of re-accreditation.
2	27-01-2014	To prepare all records and documents in view of the ensuing NAAC Re-accreditation programme.

6.2.7 Enumerate the resolutions made by the Management Council in the last year and the status of implementation of such resolutions.

We don't have management council as this is a govt. college.

6.2.8 Does the affiliating university make a provision for according the status of autonomy to an affiliated institution? If 'yes', what are the efforts made by the institution in obtaining autonomy?

Yes, the process is on the cards. Under the guidance of the CCE, hectic preparations are under process to go for autonomy.

6.2.9 How does the Institution ensure that grievances/complaints are promptly attended to and resolved effectively? Is there a mechanism to analyze the nature of grievances for promoting better stakeholder relationship?

Yes, the cell receives the grievances of both teaching and non-teaching staff and students resolves the complaints at institution itself. If it is of a serious nature it will be communicated to the higher authority concerned and thus at that level they will be resolved.

6.2.10 During the last four years, had there been any instances of court cases filed by and against the institute? Provide details on the issues and decisions of the courts on these?

No.

6.2.11 Does the Institution have a mechanism for analyzing student feedback on institutional performance? If 'yes', what was the outcome and response of the institution to such an effort?

Yes, annually the feedback from the students is analyzed and decisions are made to improve the performance. In the light of the feedback received from the stakeholders, the institution prepares institutional plan and the institution uses data and information obtained from the Parents' Association & Alumni to improve the overall performance.

6.3 Faculty Empowerment Strategies

6.3.1 What are the efforts made by the institution to enhance the professional development of its teaching and non teaching staff?

Yes, the institution uses this evaluation to improve teaching and research of the faculty. They are encouraged to attend orientation and refresher courses to organize seminars and workshops.

6.3.2 What are the strategies adopted by the institution for faculty empowerment through training, retraining and motivating the employees for the roles and responsibility they perform?

Policies and practices of the institution are based on the guidelines supplied by the CCE, Hyderabad. However, the institution encourages its teachers to undertake research, participate in seminars, conferences, workshops and also encourages them to become members in Academic Associations. Study leave is granted for research. Teachers are exempted from duties when they attend to deliver lectures as a part of DRC activity and for presentation of papers in national seminars. In the institution, ten staff members are associated with various professional academic associations.

6.3.3 Provide details on the performance appraisal system of the staff to evaluate and ensure that information on multiple activities is appropriately captured and considered for better appraisal.

- The institution assesses the need for faculty development on the basis of their present qualifications as well as their teaching experience.
- 17 Lecturers attended refresher / orientation courses in the last 2 years.
- Faculty development in teaching learning process is required. Acquisition of knowledge in the latest fields is a necessity. Hence, the management deputed the faculty to refresher courses conducted by various universities. The institution is providing internet facilities in the departments for browsing the recent developments in the subject.
- IQAC makes periodic assessment of the progress of the research activities of the teachers.

6.3.4 What is the outcome of the review of the performance appraisal reports by the management and the major decisions taken? How are they communicated to the appropriate stakeholders?

Excellent improvement is made in teaching. The message of the review is communicated confidentially to the concerned teachers.

6.3.5 What are the welfare schemes available for teaching and non teaching staff? What percentage of staff have availed the benefit of such schemes in the last four years?

Policies and practices of the institution are based on the guidelines supplied of the CCE, Hyderabad. All the teaching and non teaching staff have Provident Fund, APGLI, Earned Leave, Special Leaves on medical grounds. Recently the government provided health cards also. All they needs personal and financial are met with promptness. They are encouraged to develop healthy habits.

6.3.6 What are the measures taken by the Institution for attracting and retaining eminent faculty?

- The college provides separate staff room for each department.
- Computer and networking facilities.
- Separate reading room for the staff in the library.
- LCD projectors.
- A spacious auditorium for organizing seminars, meetings, conferences.
- Recreation facilities and Mana TV. However in financial matters the institution has limited powers.

6.4 Financial Management and Resource Mobilization

6.4.1 What is the institutional mechanism to monitor effective and efficient use of available financial resources?

There will be a committee of senior faculty members to look after the optimum usage of financial resources.

6.4.2 What are the institutional mechanisms for internal and external audit? When was the last audit done and what are the major audit objections? Provide the details on compliance.

Accounts are audited regularly by both internal and external audits. Internal audit is headed by Regional Joint Director of Higher Education or by the representative of the Commissioner.

The Accountant General, AP, Hyderabad, State Audit Party or Audit party of Commissioner of Collegiate Education, AP, Hyderabad will inspect periodically once in two or three years for verification of records, files pertaining to the accounts maintained by the office.

6.4.3 What are the major sources of institutional receipts/funding and how is the deficit managed? Provide audited income and expenditure statement of academic and administrative activities of the previous four years and the reserve fund/corpus available with Institutions, if any.

The major sources of institutional funding are,

1. Special fee
2. Financial assistance by the State govt.
3. UGC Funds

Generally there won't be any deficit as we have to adjust with the available funds only.

6.4.4 Give details on the efforts made by the institution in securing additional funding and the utilization of the same (if any).

Special request are made both to the state govt. and to the UGC for securing additional funds.

6.5 Internal Quality Assurance System (IQAS)

6.5.1 Internal Quality Assurance Cell (IQAC)

a. HAS the institution established an Internal Quality Assurance Cell (IQAC)? If

‘yes’, what is the institutional policy with regard to quality assurance and how has it contributed in institutionalizing the quality assurance processes?

The IQAC was reconstituted in the year 2006-07 to monitor academic progress and to improve continuous improvement in all activities of the college. The institution is striving hard to make use of the learning resources available, and innovative teaching techniques adopted in various departments to make the college a centre of excellence.

The strengths of this institution are as follows:

- Interdisciplinary curricular designing.
- Career guidance cell and JKC offer counseling on employment opportunities.
- Promotion of Research activity where by the teaching staff is sanctioned Minor Research Projects.
- Publication of papers by staff in the national / international journals.
- Paper presentations at conferences and seminars.
- Use of modern teaching aids in the classrooms especially ICT / OHP / LCD in certain departments.
- Placement of students in reputed organizations such as TCS, Wipro, Infosys and Dr. Reddy’s Labs as a reflection of the quality education imparted by the institution.
- Interaction with experts in different fields by inviting them to deliver guest-lectures.

- b.** How many decisions of the IQAC have been approved by the management/ authorities for implementation and how many of them were actually implemented?

All

- c.** Does the IQAC have external members on its committee? If so, mention any significant contribution made by them.

No

- d.** How do students and alumni contribute to the effective functioning of the IQAC?

By offering their valuable suggestions and astute guidance.

- e.** How does the IQAC communicate and engage staff from different constituents of the institution?

By holding meetings with the experts of the different committees of the institution.

- 6.5.2** Does the institution have an integrated framework for Quality assurance of the academic and administrative activities? If 'yes', give details on its operationalisation.

No, the institution doesn't provide any training to its staff but DRC at the Nodal College provides training.

- 6.5.3** Does the institution provide training to its staff for effective implementation of the Quality assurance procedures? If 'yes', give details enumerating its impact.

Yes, CCE carries on academic audit regularly and there is a great improvement.

- 6.5.4** Does the institution undertake Academic Audit or other external review of the academic provisions? If 'yes', how are the outcomes used to improve the institutional activities?

Academic audit is done by the CCE and IQAC assists the college management in implementing of audit party.

- 6.5.5** How are the internal quality assurance mechanisms aligned with the requirements of the relevant external quality assurance agencies/regulatory authorities?

IQAC plays the role of internalizing the suggestions of external agencies.

6.5.6 What institutional mechanisms are in place to continuously review the teaching learning process? Give details of its structure, methodologies of operations and outcome?

A committee with the senior faculty members is constituted to review the teaching and learning process. The methods of the process that are adapted to review are,

- The interactive meetings are conducted with the students every quarter and their views on the academic activities and obtain their feedback.
- Student representatives also interact with the faculty on various academic matters.
- The in-charges of departments interact with the students in their respective disciplines and attend to their personal needs.
- Alumni also extend their help for the benefit of the student's community.
- Based on the introduction suitable suggestions will be given to the teachers concerned.

6.5.7 How does the institution communicate its quality assurance policies, mechanisms and outcomes to the various internal and external stakeholders?

- Implementation of student-charter.
- Computerization and transparency in administration.
- Maintenance of student database through electronic form.
- Giving wide publicity through print electronic media.
- Utilizing the services of alumni.

Any other relevant information regarding Governance Leadership and Management which the college would like to include.

CRITERIA VII: INNOVATIONS AND BEST PRACTICES

7.1 Environment Consciousness

7.1.1 Does the Institute conduct a Green Audit of its campus and facilities?

Yes.

7.1.2 What are the initiatives taken by the college to make the campus eco-friendly?

- Energy conservation

- Use of renewable energy

All the foliage in the campus is collected at regular intervals and preserved in a pit earmarked for it in order to make it manure for the plants in the campus

- Water harvesting

Small pits are dug in the campus with an effort to harvest rain water

- Check dam construction

Off the campus at Yerradoddi a check dam was built by NSS students.

- Efforts for Carbon neutrality

- Plantation

Nearly 3000 plants are planted with the aim of spreading greenery in the campus

- Hazardous waste management

- e-waste management

7.2 Innovations

7.2.1. Give details of innovations introduced during the last four years which have created a positive impact on the functioning of the college.

The following innovations created a positive impact on the functioning of the college:

- Blood donations by the staff and students
- Conducting health camps in the campus and the off campus.
- Organizing job melas in collaboration with other organizations.
- Giving free coaching for all competitive examinations.
- Teach back by senior students.
- Consumer awareness camps by Dept. of Commerce.
- Free consultancy service for farmers by Dept. of Sericulture.
- Free Spoken English classes for working women and house wives by Dept. of English.
- Proper usage of cell phone awareness camps by Dept of Physics.
- Conducting awareness camps on fluoride water treatment and management by Dept of Chemistry.
- Free coaching in Yoga by Dept of Zoology.
- Free training in preparation of flower bogies by Dept of Botany.
- Conducting awareness camps on usage of plastic covers and bags.
- Creating awareness to farmers and womens on government policies and bank loans.
- Conducting out-reach programs in nearby Junior colleges.
- Free training on paper plates preparation by Dept of sericulture.
- Free training to newly inducted teachers on Spoken English & Grammar by Dept of English.
- Paying poor students examination and term fee by staff.
- Workshops and guest lectures by eminent personalities in the fields

concerned.

- Conducting classes on disaster management by the staff.
- Conducting seminars on communal harmony.
- Computer knowledge to the interested public.
- Counseling on women empowerment and gender equality.
- Giving training on road safety measures.
- Free consultancy service in nursery management and seeding protection.
- Literacy awareness by Dept of Urdu.
- Conducting talent hunt by JKC.
- Creating awareness of food disasters by Dept of Zoology.
- Conducting Hindi Divas by Dept of Hindi.
- Conducting free awareness on food and fruit preservation by Dept of Zoology and Botany.
- Conducting AIDS awareness camps by NSS.
- Conducting awareness camps on population controlling.
- To add value to the curriculum, certificate courses are introduced.
- Additional reading material is provided for advanced and meritorious students.
- ICT is used in teaching-learning activities.
- Bridge courses are conducted soon after admissions.
- Special counseling sessions are arranged.
- Special remedial coaching is given.
- Talent in sports and cultural activities are identified and special coaching is provided for them.
- Measures are taken to control drop out rates.
- Location of the college.(This college is located in a good and serene atmosphere with a lush green garden)
- Transportation facilities.
- Providing financial assistance to the students by way of scholarships as per the rules of the government.
- Jawahar Knowledge Centre (JKC)
- English Language lab

- Strict adherence to academic schedule
- Friendly relationship of staff and students
- Transparent admission policy
- Fee reimbursement to the students belonging to socially economically backward classes, different abled students, etc.
- Spacious playground and Gym
- Library and ICT facilities
- Remedial classes for academically backward students and Minorities.
- Grievance Redressal Cell, Anti Ragging cell and Career Guidance Cell.
- Provision of certificate courses.
- Dr. B.R. Ambedkar Open University Centre.
- Literacy club.
- Construction Cycle shed by the staff.

7.3 Best Practices

7.3.1 Elaborate on any two best practices as per the annexed format (see page ..) which have contributed to the achievement of the Institutional Objectives and/or contributed to the Quality improvement of the core activities of the College.

1. The collage implements a best practice called ONE RUPEE SEVA PATHAKAM. Under this programme every student collects Rs.10 from ten persons (Rs.1 from each) and adds Rs.1 as his own share. The entire 1400 students of the college collect Rs.15400 per month. Every month the amount is collected by the students and the student's handover the amount to the lecturer concerned and the lecturers' inturn handover the amount to the convener of ONE RUPEE SEVA PATHAKAM. The amount will be credited into the bank account opened on the joint names of the principal and the convener. The amount is spent for the welfare of the poorest of the poor students.

The process of collecting the amount continues for ten months and the same will be spent accordingly on the requirements of the students. The unspent amount will be carried forward to the following year.

2. Every group in the college has a literacy club. The club members visit the surrounding villages of the college on every second Saturday. They identify illiterate people in the village and educate them. This is the other best practice the college can boast of.

PART-III

DEPARTMENT OF ENGLISH

1. Name of the department: English
2. Year of Establishment: 1975
3. Names of Programmes / Courses offered
 - a) UG : YES
 - b) PG : -
 - c) M.Phil : -
 - d) Ph.D : -
 - e) Integrated Masters: -
 - f) Integrated Ph.D : -
4. Names of Interdisciplinary courses and the departments/units involved: NIL
5. Annual/ semester/choice based credit system (programme wise): Annual
6. Participation of the department in the courses offered by other departments: NIL
7. Courses in collaboration with other universities, industries, foreign institutions, etc.:
NIL
8. Details of courses/programmes discontinued (if any) with reasons: NIL
9. Number of Teaching posts

Designation	Sanctioned	Filled
Professors	-	-
Associate Professors	-	-
Asst. Professors	3	3

10. Faculty profile with name, qualification, designation, specialization, (D.Sc./D.Litt. /Ph.D. / M. Phil. etc.,)

Name	Qualification	Designation	Specialization	No. of Years of Experience	No. of Ph.D. Students guided for the last 4 years
Dr. R. Hyder Ali	M.A., M.Phil., Ph.D	Asst. Professor	American Literature, English language	12	NA
Dr. T.T.P. Mohan Babu	M.A., M.Ed., M.Phil., Ph.D	Asst. Professor	American Literature, Translation Studies	4	NA

Sri. P. Sreenivasulu	MA	Guest Faculty	Linguistics	1	NA
----------------------	----	---------------	-------------	---	----

11. List of senior visiting faculty:

- 1) Prof. M.A.K. Sukumar, Rector, SVU, Tirupathi.
- 2) Prof. M. Narendra, BOS Chairman, Dept. of Eng, SVU, Tirupathi.
- 3) Prof. G.M. Sundaravalli, Head, Dept of English, SVU, Tirupathi.
- 4) T.V.R. Naidu, Head, Dept of Eng, GDC, Vayalpadu.

12. Percentage of lectures delivered and practical classes handled(programme wise) by temporary faculty: NIL

13. Student -Teacher Ratio (programme wise): 918:3

14. Number of academic support staff (technical) and administrative staff; sanctioned and filled: NIL

15. Qualifications of teaching faculty with DSc/ D.Litt/ Ph.D/ MPhil/PG.: Ph.D.-2, PG-1

16. Number of faculty with ongoing projects from

- a) National b) International funding agencies and grants received: NIL

17. Departmental projects funded by DST-FIST; UGC, DBT, ICSSR, etc. and total grants received: NIL

18. Research Centre /facility recognized by the University: NIL

19. Publications:

- Publication per faculty: 10
- Number of papers published in peer reviewed journals (national/ international) by faculty and students: NIL
- Number of publications listed in International Database (For Eg: Web of Science, Scopus, Humanities International Complete, Dare Database - International Social Sciences Directory, EBSCO host, etc.): NIL
- Monographs: NIL
- Chapter in Books: 02
- Books Edited: 04
- Books with ISBN/ISSN numbers with details of publishers: NIL
- Citation Index: NIL
- SNIP: NIL
- SJR: NIL
- Impact factor: NIL

- h-index: NIL
20. Areas of consultancy and income generated: NIL
21. Faculty as members in
- a) National committees b) International Committees c) Editorial Boards..: NIL
22. Student projects
- a) Percentage of students who have done in-house projects including inter departmental/programme: 10%
 - b) Percentage of students placed for projects in organizations outside the institution i.e., in Research laboratories/Industry/other agencies: NIL
23. Awards/ Recognitions received by faculty and students: NIL
24. List of eminent academicians and scientists/ visitors to the department:
- 1) Prof. M.A.K. Sukumar, Rector, SVU, Tirupathi.
 - 2) Prof. M. Narendra, BOS Chairman, Dept. of Eng, SVU, Tirupathi.
 - 3) Prof. G.M. Sundaravalli, Head, Dept of English, SVU, Tirupathi.
 - 4) D.C. Babaiah, Retired principal, GDC, Kadiri.
 - 5) T.V.R. Naidu, Head, Dept of Eng, GDC, Vayalpadu.
25. Seminars/Conferences/Workshops organized & the source of funding
- a) National: NIL
 - b) International: NIL
26. Student profile programme/course wise:

Name of the Course/programme (refer question no: 4)	Applications received	Selected	Enrolled		Pass percentage
			Male	Female	
I B.A (UHP,HEP & THP)	220	208	108	100	
I B.Com (General & CA)	200	183	110	73	
I B.Sc	190	160	90	70	
II B.A (UHP,HEP & THP)	200	180	120	60	92 %
II B.Com (General & CA)	220	215	135	80	94 %
II B.Sc	180	180	95	85	

27. Diversity of Students

Name of the Course	% of students from the same state	% of students from other States	% of students From abroad
B.A	100 %	--	--

B.Com	100 %	--	--
B.Sc	100 %	--	--

28. How many students have cleared national and state competitive examinations such as NET, SLET, GATE, Civil services, Defense services, etc.?: NIL

29. Student progression

Student progression	Against % enrolled
UG to PG	20
PG to M.Phil.	--
PG to Ph.D.	--
Ph.D. to Post- Doctoral	
Employed	45
• Campus selection	10
• Other than campus recruitment	35
Entrepreneurship/Self-employment	10

30. Details of Infrastructural facilities

- a) Library: Yes, departmental Library with 1000 Volumes is available.
- b) Internet facilities for Staff & Students: Yes, provided.
- c) Class rooms with ICT facility: Yes, provided.
- d) Laboratories: One Language Laboratory is available.

31. Number of students receiving financial assistance from college, university, Government or other agencies: 500

32. Details on student enrichment programmes (special lectures/workshops/Seminar) with external experts: 5 Guest Lectures are arranged per year

33. Teaching methods adopted to improve student learning: Deductive, Inductive, Lecture method, Interactive method with LCD projector

34. Participation in Institutional Social Responsibility (ISR) and Extension activities:

- The department participated in Out Reach Program. Under this program the staff along with the students visited and engaged remedial classes on grammar in the junior colleges and in the schools in and around Kadiri. The hearing thing of this program is our college students participated and engaged some classes in the colleges and in the schools where they previously studied. Definitely it was a thrilling experience to the students Participated in NSS,

Environmental campaigning and plantation activities.

- Participated in plantation program
- Participated in NSS activities
- Participated in AIDS Day, Blood Donation Camp, Voters day, Human Rights Day and Women's Day programmes and processions.
- Gave a helping hand to the English medium teachers
- Participated in the English Literacy Enhancement Programmes

35. SWOC analysis of the department and Future plans:

- **Strengths**
 - Hardworking, dedication and some innovative thinking to make use of available resources for getting maximum benefit is the main strength of the department.
 - Qualified staff with considerable experience both in teaching and research.
 - High demand for English language.
 - Good employment opportunity.
 - International and bread winning language.
- **Weakness**
 - Most of the students are from rural area, lack proper foundation in English is a bane.
- **Opportunities**
 - Can get many jobs with good communication skills.
 - Good demand for English teacher and lecturers with the mushrooming of corporate educational institutions.
 - Can get a job anywhere under the sky.
 - Lot of demand in BPO/Medical transcription industry.
- **Challenges**
 - Regionalism and vernacular language consciousness is a big challenge to the department.
- **Future Plans**

The Department

 - Contemplates starting of P.G. Course and a Diploma Course in Spoken English very shortly.
 - Desires to start a separate certificate course to housewives and working

women.

- Strongly desires to organize a national seminar on Trends and techniques in imparting Spoken English
- Wishes to start a literary magazine
- Wishes to conduct periodical practicals and workshops for teachers of English in and around the Kadiri region.
- Plans to send our JKC trained students to rural schools to teach English at regular intervals.

DEPARTMENT OF TELUGU

1. Name of the Department: TELUGU
2. Year of Establishment: 1975
3. Names of Programmes / Courses offered
 - a) UG : UG
 - b) PG : NIL
 - c) M.Phil : NIL
 - d) Ph.D : NIL
 - e) Integrated Masters: NIL
 - f) Integrated Ph.D : NIL
4. Names of Interdisciplinary courses and the departments / units involved: NIL
5. Annual / semester / choice based credit system (programme wise): Annual
6. Participation of the department in the courses offered by other departments: NIL
7. Courses in collaboration with other universities, industries, foreign institutions, etc.:
NIL
8. Details of courses / programmes discontinued (if any) with reasons: NIL
9. Number of teaching posts

Designation	Sanctioned	Filled
Professors	-	-
Associate Professors	-	-
Assistant Professors / Lecturers	3	3

10. Faculty profile with name, qualification, designation, specialization

(D.Sc./D.Litt./Ph.D/ M. Phil. etc.)

Name	Qualification	Designation	Specialization	Experience in years	No. of Ph.D., students guided for the last 4 years
Dr. K. Chenna Kesava Reddy	M.A., Ph.D.	Asst. professor	Telugu	3	NA
Dr.K. Srinivas	M.A., B.Ed.	Asst. professor	Telugu	3	NA
C. Hema Maruthi	M.A.	Asst. professor	Telugu	2	NA

11. List of senior visiting faculty: 04
12. Percentage of lecturers delivered and practical classes handled (Program wise) by temporary faculty: NIL
13. Student – Teacher ratio (Program wise): 135:3
14. Number of academic support staff (technical) and administrative staff ; sanctioned and filled: NIL
15. Qualifications of teaching faculty with DSc/ D. Litt/ Ph.D/M.Phil/P.G.:Ph.D-1, P.G-2.
16. Number of faculty with ongoing projects from funding agencies and grants received.
 - a) National : NIL
 - b) International: NIL
17. Department projects funded by DST-FIST; UGC, DBT, ICSSR, etc. and total grants received :NIL
18. Research centre / facility recognized by the university: NIL
19. Publications:
 - Publication per faculty: 04
 - Number of papers published in peer reviewed journals (National/ International) by faculty and students: NIL
 - Number of publications listed in International database (For Eg: Web of Science, Scopus, Humanities International Complete, Dare Database, International social sciences directory, EBSCO host, etc.): NIL
 - Monographs: NIL
 - Chapters in books: NIL
 - Books edited: NIL
 - Books with ISBN/ISSN numbers with details of publishers: NIL
 - Citation Index: Google Scholar, Elsevier and Science direct: NIL
 - SNIP:NIL
 - SJR:NIL
 - Impact factor: NIL
 - h-index: NIL
20. Areas of consultancy and income generated: NIL
21. Faculty as members in
 - a) National committees: NIL
 - b) International Committees: NIL

c) Editorial Boards: NIL

22. Student projects

a) Percentage of students who have done in-house projects including interdepartmental/programme: NIL

b) Percentage of students placed for projects in organizations outside the institution i.e.in Research laboratories/Industry/other agencies: NIL

23. Awards/ Recognitions received by faculty and students: NIL

24. List of eminent academicians and scientists/ visitors to the department: NIL

25. Seminars/ Conferences/Workshops organized & the source of funding

a) National : NIL

b) International: NIL

26. Student profile programme/course wise:

Name of the Course/programme (refer question no. 4)	Applications received	Selected	Enrolled		Pass percentage
			Male	Female	
I BA	105	96	46	50	
II BA	109	94	43	66	86
III BA	77	68	34	43	88
I BCOM	220	181	77	104	
II BCOM	127	105	53	74	83
III BCOM	131	108	44	87	93
I BSC	170	156	66	90	
II BSC	97	88	42	46	91
III BSC	83	77	33	44	93

27. Diversity of Students

Name of the Course	% of students from the Same state	% of students from other States	% of students from Abroad
B.A.	100%	NIL	NIL
B.Com	100 %	NIL	NIL
B.Sc	100 %	NIL	NIL

28. How many students have cleared national and state competitive examinations such as NET, SLET, GATE, Civil services, Defense services, etc.?: NIL

29. Student progression

Student progression	Against % enrolled
UG to PG	30%
PG to M.Phil.	-
PG to Ph.D.	
Ph.D. to Post-Doctoral	-
Employed <ul style="list-style-type: none"> • Campus selection • Other than campus recruitment 	-
Entrepreneurship/Self-employment	20 %

30. Details of Infrastructural facilities

- a) Library: 200 Books
- b) Internet facilities for Staff & Students: NIL
- c) Class rooms with ICT facility: Sources from JKC, Entry Level Coaching and Career Guidance Cell
- d) Laboratories: NIL

31. Number of students receiving financial assistance from college, university, Government or other agencies: NIL

32. Details on student enrichment programmes (special lectures/workshops/Seminar) with external experts: 2 Guest lecturers & 1 Seminar were organized.

33. Teaching methods adopted to improve student learning:
Traditional Teaching Method, Interactive Method Adopted.

34. Participation in Institutional Social Responsibility (ISR) and Extension activities: The College Staff and Students were participated in rally on International AIDS Day & Red Ribbon Program

35. SWOC analysis of the department and Future plans:

- **Strengths**
 - Hardworking, dedication and some innovative thinking to make use of available resources for getting maximum benefit is the main strength of the department.
 - Qualified staff with considerable experience both in teaching and research.
 - Good employment opportunity in A.P.
 - Telugu, being the mother tongue of the students, learning and teaching

process is more fruitful.

- **Weakness**

- Lack of proper foundation in Telugu is a bane.

- **Opportunities**

- Can get any job in A.P
- Good demand for Telugu Pandits and lecturers.
- Can get good positions in Print and Electronic media with the mushrooming of Television channels and Newspapers in Telugu.

- **Challenges**

- As most of the students prefer English to Telugu, demand for Telugu is waning.

- **Future Plans**

The Department

- Contemplates starting of P.G. Course.
- Strongly desires to organize a national seminar on “Vemana Sahithyam”.
- Wishes to start a Diploma in Journalism.

DEPARTMENT OF HINDI

1. Name of the Department: HINDI
2. Year of Establishment: 1975
3. Names of Programmes / Courses offered
 - a) UG : B.Sc., B.Com., B.A
 - b) PG : NIL
 - c) M.Phil : NIL
 - d) Ph.D : NIL
 - e) Integrated Masters: NIL
 - f) Integrated Ph.D : NIL
4. Names of Interdisciplinary courses and the departments / units involved: NIL
5. Annual / semester / choice based credit system (programme wise): Annual
6. Participation of the department in the courses offered by other departments: NIL
7. Courses in collaboration with other universities, industries, foreign institutions, etc.:
NIL
8. Details of courses/ programmes discontinued (if any) with reasons: NIL
9. Number of teaching posts

Designation	Sanctioned	Filled
Professors	NIL	NIL
Associate Professors	NIL	NIL
Assistant Professors / Lecturers	1	2

10. Faculty profile with name, qualification, designation, specialization

(D.Sc./D.Litt./Ph.D/ M. Phil. etc.)

Name	Qualification	Designation	Specialization	Experience in years	No. of Ph.D., students guided for the last 4 years
Smt. M. Rabiya Begum	MA	Lecturer	Hindi	05	NIL
Smt. K. Chandra	MA, Ph.D	Lecturer	Hindi	11	NIL

11. List of senior visiting faculty:

- 1) Dr. Satyanarayana Rao, Lecturer in Hindi, GDC, Kurnool.
- 2) Dr. Shashank Mouli, Lecturer in Hindi, Arts College, ATP.

12. Percentage of lecturers delivered and practical classes handled (Program wise) by temporary faculty: NIL

13. Student – Teacher ratio (Program wise):40:2

14. Number of academic support staff (technical) and administrative staff ; sanctioned and filled: NIL

15. Qualifications of teaching faculty with DSC / D. Litt/ Ph.D/ M.Phil/ P.G.: P.G-2.

16. Number of faculty with ongoing projects from funding agencies and grants received.

a) National : NIL

b) International: NIL

17. Department projects funded by DST-FIST; UGC, DBT, ICSSR, etc. and total grants received: NIL

18. Research centre/ facility recognized by the university: NIL

19. Publications:

- Publication per faculty: NIL
- Number of papers published in peer reviewed journals (National/ International) by faculty and students: NIL
- Number of publications listed in International database (For Eg: Web of Science, Scopus, Humanities International Complete, Dare Database, International social sciences directory, EBSCO host, etc.)
- Monographs: NIL
- Chapters in books: NIL
- Books edited: NIL
- Books with ISBN/ISSN numbers with details of publishers
- Citation Index:
- SNIP: NIL
- SJR: NIL
- Impact factor: NIL
- h-index: NIL

20. Areas of consultancy and income generated: NIL

21. Faculty as members in

- a) National committees: NIL
- b) International Committees: NIL
- c) Editorial Boards: NIL

22. Student projects

- a) Percentage of students who have done in-house projects including interdepartmental/programme: NIL
- b) Percentage of students placed for projects in organizations outside the institution i.e.in Research laboratories/Industry/other agencies: NIL

23. Awards/ Recognitions received by faculty and students: NIL

24. List of eminent academicians and scientists/ visitors to the department: NIL

25. Seminars/ Conferences/Workshops organized & the source of funding

- a) National : NIL
- b) International: NIL

26. Student profile programme/course wise:

Name of the Course/programme (refer question no. 4)	Applications received	Selected	Enrolled		Pass percentage
			Male	Female	
IBA, BSC, B.Com	18	18	10	08	100 %
IIBA, BSC, B.Com	22	22	12	10	87.5 %

27. Diversity of Students

Course	% of students from the Same state	% of students from other States	% of students from abroad
B.Sc., BA, B.Com	100%	NIL	NIL

28. How many students have cleared national and state competitive examinations such as NET, SLET, GATE, Civil services, Defense services, etc.?

ONE Candidate has been qualified for NET in 2007.

29. Student progression

Student progression	Against % enrolled
UG to PG	3%
PG to M.Phil.	-
PG to Ph.D.	-

Ph.D. to Post-Doctoral	-
Employed	-
<ul style="list-style-type: none"> • Campus selection • Other than campus recruitment 	-
Entrepreneurship/Self-employment	-

30. Details of Infrastructural facilities

- a) Library: Yes, 150 Volumes
- b) Internet facilities for Staff & Students: NIL
- c) Class rooms with ICT facility: NIL
- d) Laboratories: NIL

31. Number of students receiving financial assistance from college, university, Government or other agencies: 78% of the students are receiving Social Welfare Scholarships from the State Government of AP.

32. Details on student enrichment programmes (special lectures/workshops/Seminar) with external experts: 3 Guest lecturers were organized.

33. Teaching methods adopted to improve student learning:
Lecture cum demonstration,

34. Participation in Institutional Social Responsibility (ISR) and Extension activities: The College Staff and Students participated in rally on Hindi Day Celebrations for creating awareness on National Language in society.

35. SWOC analysis of the department and Future plans:

- **Strengths**
 - Hindi, being the national language students can get job anywhere in India.
 - Increasing demand for Hindi language in foreign countries also like USA and UK.
 - Qualified staff with considerable experience both in teaching and research.
- **Weakness**
 - Lack of interest among the students.
 - Limited government support for Hindi in AP.
 - Non availability of required books locally.
- **Opportunities**
 - Can become Hindi teachers, lecturers and professors.

- Can become translators.
- Can get central govt. posts.
- **Challenges**
 - The department faces big challenge from Telugu and Sanskrit languages as most of the students prefer to study Telugu language only.
- **Future Plans**
 - Would like to start PG Course (M.A. Hindi)
 - Would like to start a certificate course in Hindi.
 - Would like to conduct a National Seminar.

DEPARTMENT OF URDU

1. Name of the Department: URDU
2. Year of Establishment: 1995
3. Names of Programmes / Courses offered
 - a) UG : BA(UHP)
 - b) PG : NIL
 - c) M.Phil : NIL
 - d) Ph.D : NIL
 - e) Integrated Masters: NIL
 - f) Integrated Ph.D : NIL
4. Names of Interdisciplinary courses and the departments / units involved: Involved with other departments like Department of History(Urdu), Department of History(Telugu) and Department of Political Science(Urdu/Telugu)
5. Annual / semester / choice based credit system (programme wise): Annual
6. Participation of the department in the courses offered by other departments: NIL
7. Courses in collaboration with other universities, industries, foreign institutions, etc.: NIL
8. Details of courses / programmes discontinued (if any) with reasons: NIL
9. Number of teaching posts

Designation	Sanctioned	Filled
Professors	NIL	NIL
Associate Professors	NIL	NIL
Assistant Professors / Lecturers	2	2

10. Faculty profile with name, qualification, designation, specialization (D.Sc. /D.Litt. /Ph.D/M. Phil. etc.)

Name	Qualification	Designation	Specialization	Experience in years	No. of Ph.D., students guided for the last 4 years
Dr. S. Farooq Basha	MA, M.Phil., Ph.D.,	Asst. Professor	Urdu Criticism	3	NIL

D. S. Jamsheed Begum	MA	Asst. Professor	Urdu Language	2	NIL
----------------------------	----	--------------------	------------------	---	-----

11. List of senior visiting faculty:

- 1) Professor Muzzafar Ali Shameri
- 2) Professor Abdul Sattar Saher
- 3) Dr. Nizamuddin
- 4) Sri Iqbal Quraish
- 5) Sri Arif Ameen
- 6) Dr. Imtiyaz

12. Percentage of lecturers delivered and practical classes handled (Program wise) by temporary faculty: NIL

13. Student – Teacher ratio (Program wise): 100:2

14. Number of academic support staff (technical) and administrative staff ; sanctioned and filled: NIL.

15. Qualifications of teaching faculty with DSc/ D. Litt/ Ph.D/ M.Phil/ P.G.: MA, MPhil: MA-1, Ph.D.-1.

16. Number of faculty with ongoing projects from funding agencies and grants received.

- a) National : NIL
- b) International: NIL

17. Department projects funded by DST-FIST; UGC, DBT, ICSSR, etc. and total grants received: NIL

18. Research centre / facility recognized by the university: NIL

19. Publications:

- Publication per faculty: 3
- Number of papers published in peer reviewed journals (National/International) by faculty and students.: 5
- Number of publications listed in International database (For Eg. Web of Science, Scopus, Humanities International Complete, Dare Database, International social sciences directory, EBSCO host, etc.): NIL
- Monographs: NIL
- Chapters in books: NIL
- Books edited: NIL

- Books with ISBN/ISSN numbers with details of publishers: 3
 - Citation Index: NIL
 - SNIP: NIL
 - SJR: NIL
 - Impact factor: NIL
 - h-index: NIL
20. Areas of consultancy and income generated: Delivered a lecture for the Department of Urdu at College level
21. Faculty as members in
- a) National committees: NIL
 - b) International Committees: NIL
 - c) Editorial Boards: NIL
22. Student projects
- a) Percentage of students who have done in-house projects including inter departmental/programme: 80 %
 - b) Percentage of students placed for projects in organizations outside the institution i.e., in Research laboratories/Industry/other agencies: NIL
23. Awards/ Recognitions received by faculty and students: 05
24. List of eminent academicians and scientists/ visitors to the department:
- 1) Mohd. Shahid
 - 2) Professor Muzzafar Ali Shameri
 - 3) Professor Abdul Sattar Saher
 - 4) Dr. Nizamuddin
 - 5) Sri Iqbal Quraish
 - 6) Sri Arif Ameeni
 - 7) Dr. Imtiyaz
25. Seminars/Conferences/Workshops organized & the source of funding
- a) National : Organized two National Seminars on “Urdu Nasarki Adabi asnaf” with the financial assistance of UGC and NCPUL
 - b) International: NIL

26. Student profile programme/course wise:

Name of the Course/programme (refer question no. 4)	Applications received	Selected	Enrolled		Pass percentage
			Male	Female	
I BA(UHP)	49	49	9	40	100
II BA(UHP)	20	20	3	17	100
III BA(UHP)	20	20	-	20	100

27. Diversity of Students

Name of the Course	% of students from the Same state	% of students from other States	% of students from Abroad
BA(UHP)	100%	NIL	NIL

28. How many students have cleared national and state competitive examinations such as NET, SLET, GATE, Civil services, Defense services, etc.: ONE Candidate has been qualified for NET in 2012 and one student Qualified SLET in 2012.

29. Student progression

Student progression	Against % enrolled
UG to PG	5%
PG to M.Phil.	-
PG to Ph.D.	-
Ph.D. to Post-Doctoral	-
Employed	40 %
• Campus selection	4 %
• Other than campus recruitment	36 %
Entrepreneurship/Self-employment	-

30. Details of Infrastructural facilities

- Library: Yes, 200 books available.
- Internet facilities for Staff & Students: Yes
- Class rooms with ICT facility: NIL
- Laboratories: NIL

31. Number of students receiving financial assistance from college, university, Government or other agencies: 80% of the Minority students are receiving Scholarships from the State Government of AP.

32. Details on student enrichment programmes (special lectures/workshops/Seminar) with

external experts: 2 Guest lectures were organized.

33. Teaching methods adopted to improve student learning:

Lecture cum demonstrative methods.

34. Participation in Institutional Social Responsibility (ISR) and Extension activities:

Participated in Worlds AIDS Day, Women Empowerment, Voters Day rally, Clean and green Programme

35. SWOC analysis of the department and Future plans:

- **Strengths**

- Well Qualified Lectures.
- More students are passing in distinction and 100% result.
- Mother tongue and medium both are Urdu so communication and understanding the subject is very easy.
- Having good knowledge on other languages is a boon for Urdu medium Students.

- **Weakness**

- Lack of Good Command in English Language
- Lack of Computer Knowledge.
- Lack of Infrastructure.
- Lack of Reference Books and Text books

- **Opportunities**

- Good numbers of students are getting admission in PG, and higher Education.
- Many Urdu Students are getting jobs in teaching field both in government and Private sector.

- **Challenges**

- Poverty in Muslim Community.
- Stagnation at Degree level.
- Dropout Problems.

- **Future Plans**

- Conducting an International Seminar on Relation of Urdu with Other Languages.
- Conducting a workshop on Deccan Folk Culture.
- Publishing a college Magazine in Urdu language.

- Conducting a Three day orientation programme for Urdu medium Teachers.
- Collaborating with other Universities and Institutions.
- Encouraging Urdu medium students in creative writing.

DEPARTMENT OF MATHEMATICS

1. Name of the Department: MATHEMATICS
2. Year of Establishment: 1992
3. Names of Programmes/ Courses offered
 - a) UG :YES
 - b) PG : NIL
 - c) M.Phil : NIL
 - d) Ph.D : NIL
 - e) Integrated Masters: NIL
 - f) Integrated Ph.D : NIL
4. Names of Interdisciplinary courses and the departments/ units involved: NIL
5. Annual/ semester/ choice based credit system (programme wise): Annual
6. Participation of the department in the courses offered by other departments: NIL
7. Courses in collaboration with other universities, industries, foreign institutions, etc.:
NIL
8. Details of courses/ programmes discontinued (if any) with reasons: NIL
9. Number of teaching posts

Designation	Sanctioned	Filled
Professors	NIL	NIL
Associate Professors	NIL	NIL
Assistant Professors / Lecturers	1	1

10. Faculty profile with name, qualification, designation, specialization (D.Sc. / D.Litt./Ph.D/ M. Phil. etc.)

Name	Qualification	Designation	Specialization	Experience in years	No. of Ph.D., students guided for the last 4 years
Smt. D. Leelavardhini	M.Sc	Asst. Professor	Pure Mathematics	7	NIL

11. List of senior visiting faculty: NIL
12. Percentage of lecturers delivered and practical classes handled (Program wise) by temporary faculty: NIL
13. Student – Teacher ratio (Program wise) : MPC: 60:1
: MPCs: 30:1
14. Number of academic support staff (technical) and administrative staff ; sanctioned and filled: NIL
15. Qualifications of teaching faculty with DSc/ D. Litt/ Ph.D/ M.Phil/ P.G.: P.G-1.
16. Number of faculty with ongoing projects from funding agencies and grants received.
 - a) National :NIL
 - b) International: NIL
17. Department projects funded by DST-FIST; UGC, DBT, ICSSR, etc. and total grants received :NIL
18. Research centre / facility recognized by the university: NIL
19. Publications:
 - Publication per faculty: NIL
 - Number of papers published in peer reviewed journals (National/ International) by faculty and students.: NIL
 - Number of publications listed in International database (For Eg. Web of Science, Scopus, Humanities International Complete, Dare Database, International social sciences directory, EBSCO host, etc.)
 - Monographs: NIL
 - Chapters in books: NIL
 - Books edited: NIL
 - Books with ISBN/ISSN numbers with details of publishers: NIL
 - Citation Index: NIL
 - SNIP: NIL
 - SJR: NIL
 - Impact factor: NIL
 - h-index: NIL
20. Areas of consultancy and income generated: NIL
21. Faculty as members in
 - a) National committees: NIL

b) International Committees:: NIL

c) Editorial Boards: NIL

22. Student projects

a) Percentage of students who have done in-house projects including interdepartmental/programme:

b) Percentage of students placed for projects in organizations outside the institution i.e.in Research laboratories/Industry/other agencies: NIL

23. Awards/ Recognitions received by faculty and students

24. List of eminent academicians and scientists/ visitors to the department: NIL

25. Seminars/ Conferences/Workshops organized & the source of funding

a) National : NIL

b) International: NIL

26. Student profile programme/course wise:

Name of the Course/programme (refer question no. 4)	Applications received		Selected		Enrolled				Pass percentage
					MPC		MPCS		
	M	F	M	F	M	F	M	F	
I B.SC. MPC/MPCS	34	35	34	35	19	15	20	15	--
II B.SC. MPC/MPCS	22	52	22	52	14	08	33	19	83
III B.SC. MPC/MPCS	25	29	25	29	13	12	18	11	91

27. Diversity of Students

Name of the Course	% of students from the Same state	% of students from other States	% of students from Abroad
I B.SC. MPC/MPCS	100%	NIL	NIL
II B.SC. MPC/MPCS	100%	NIL	NIL
III B.SC. MPC/MPCS	100%	NIL	NIL

28. How many students have cleared national and state competitive examinations such as NET, SLET, GATE, Civil services, Defense services, etc.?: NIL

29. Student progression

Student progression	Against % enrolled
UG to PG	10%
PG to M.Phil.	NIL
PG to Ph.D.	NIL

Ph.D. to Post-Doctoral	NIL
Employed	
• Campus selection	NIL
• Other than campus recruitment	NIL
Entrepreneurship/Self-employment	20 %

30. Details of Infrastructural facilities

- a) Library: Yes, 50 Books.
- b) Internet facilities for Staff & Students: NIL
- c) Class rooms with ICT facility: NIL
- d) Laboratories: NIL

31. Number of students receiving financial assistance from college, university, Government or other agencies: Scholarships

32. Details on student enrichment programmes (special lectures/ workshops/Seminar) with external experts: Seminar

33. Teaching methods adopted to improve student learning: Lecture, Interactive Method

34. Participation in Institutional Social Responsibility (ISR) and Extension activities:

35. SWOC analysis of the department and Future plans:

- **Strengths:**
 - Qualified & Experienced faculty
 - Special Classes for VedicMaths, Arithmetic, Reasoning & Competitive Exams
 - Teaching by latest Maths softwares like Mathematica, maple & sage
 - Remedial Classes for the slow learners
 - Maths is international subject – more opportunities.
- **Weakness**
 - No ICT Room
 - More infrastructural and ICT facilities are needed
- **Opportunities:**
 - With Mathematics background students can be easily selected in banking sector, CDS, RRB, Teachers, Lecturers and in other services.
- **Challenges**

- To develop more interest among the students in Mathematics
- Improve the perception of the students in the subject knowledge.
- Make efforts to improve the research engagements of the faculty members by winning Minor/Major research projects
- **Future Plans**
 - To organize State Level & National level Seminars
 - To get Minor & Major Research Projects
 - To celebrate Mathematics day every year on Dec 22
 - To involve the students in study projects.
 - Encourage the Students to participate in Job Melas
 - Testing numerical abilities in students of all levels
 - Provide students with the departmental library and ensure that the students get the overall personality development, skills necessary to become highly employable

DEPARTMENT OF PHYSICS

1. Name of the Department: PHYSICS
2. Year of Establishment: 1992
3. Names of Programmes/ Courses offered
 - a) UG : YES
 - b) PG : NIL
 - c) M.Phil : NIL
 - d) Ph.D : NIL
 - e) Integrated Masters: NIL
 - f) Integrated Ph.D : NIL
4. Names of Interdisciplinary courses and the departments/units involved: NIL
5. Annual /semester /choice based credit system (programme wise): Annual
6. Participation of the department in the courses offered by other departments: NIL
7. Courses in collaboration with other universities, industries, foreign institutions, etc.:
NIL
8. Details of courses/ programmes discontinued (if any) with reasons: NIL
9. Number of teaching posts

Designation	Sanctioned	Filled
Professors	NIL	NIL
Associate Professors	NIL	NIL
Assistant Professors/ Lecturers	2	2

10. Faculty profile with name, qualification, designation, specialization (D.Sc. / D.Litt./Ph.D/ M. Phil. etc.)

Name	Qualification	Designation	Specialization	Experience in years	No. of Ph.D., students guided for the last 4 years
Dr. B. Ramasubba Reddy	M.Sc., B.Ed., Ph.D	Asst. Professor	Physics	19	NIL
Smt. A. Navneetha	M.Sc.	Contract Lecturer	Physics	03	NIL

11. List of senior visiting faculty:

- 1) Dr. J. Anjaneyulu, Rtd. Principal.
- 2) Prof. P. Sreedhar Reddy, S.V. University, Tirupathi.
- 3) Dr. S. Ravindranath, Principal, Yerraguntla.
- 4) Dr. P. Ravi Kumar, Sr. Lecturer in Physics, GDC, Dharmavaram.

12. Percentage of lecturers delivered and practical classes handled (Program wise) by temporary faculty: NIL

13. Student – Teacher ratio (Program wise): MPC & MPCs: 120:2

14. Number of academic support staff (technical) and administrative staff ; sanctioned and filled: NIL

15. Qualifications of teaching faculty with DSc/ D. Litt/ Ph.D/ M.Phil/ P.G: PG-1, Ph.D-1

16. Number of faculty with ongoing projects from funding agencies and grants received.

- a) National : NIL
- b) International: NIL

17. Department projects funded by DST-FIST; UGC, DBT, ICSSR, etc., and total grants received: NIL

18. Research centre/ facility recognized by the university: NIL

19. Publications:

- Publication per faculty: 02
- Number of papers published in peer reviewed journals (National/International) by faculty and students.: NIL
- Number of publications listed in International database (For Eg. Web of Science, Scopus, Humanities International Complete, Dare Database, International social sciences directory, EBSCO host, etc.)
- Monographs: NIL
- Chapters in books: NIL
- Books edited: NIL
- Books with ISBN/ISSN numbers with details of publishers
- Citation Index: NIL
- SNIP: NIL
- SJR: NIL
- Impact factor: 1.64
- h-index: NIL

20. Areas of consultancy and income generated: NIL

21. Faculty as members in

- a) National committees: NIL
- b) International Committees: NIL
- c) Editorial Boards: NIL

22. Student projects

- a) Percentage of students who have done in-house projects including interdepartmental/programme: 30%
- b) Percentage of students placed for projects in organizations outside the institution
i.e., in Research laboratories/Industry/other agencies: NIL

23. Awards/Recognitions received by faculty and students: NIL

24. List of eminent academicians and scientists/visitors to the department: 04

- 1) Dr. J. Anjaneyulu, Rtd. Principal.
- 2) Prof. P. Sreedhar Reddy, S.V. University, Tirupathi.
- 3) Dr. S. Ravindranath, Principal, Yerraguntla.
- 4) Dr. P. Ravi Kumar, Sr. Lecturer in Physics, GDC, Dharmavaram.

25. Seminars/Conferences/Workshops organized & the source of funding

- a) National : NIL
- b) International: NIL

26. Student profile programme/course wise:

Name of the Course/programme (refer question no. 4)	Applications received		Selected		Enrolled				Pass percentage
					MPC		MPCS		
	M	F	M	F	M	F	M	F	
I B.SC. MPC/MPCS	34	35	34	35	19	15	20	15	--
II B.SC. MPC/MPCS	22	52	22	52	14	08	33	19	84
III B.SC. MPC/MPCS	25	29	25	29	13	12	18	11	92

27. Diversity of Students

Name of the Course	% of students from the Same state	% of students from other States	% of students from Abroad
I B.Sc. MPC/MPCS	100%	NIL	NIL
II B.Sc. MPC/MPCS	100%	NIL	NIL
III B.Sc. MPC/MPCS	100%	NIL	NIL

28. How many students have cleared national and state competitive examinations such as NET, SLET, GATE, Civil services, Defense services, etc.?: NIL

29. Student progression

Student progression	Against % enrolled
UG to PG	40 % M.Sc., MBA, MCA
PG to M.Phil.	-
PG to Ph.D.	-
Ph.D. to Post-Doctoral	-
Employed <ul style="list-style-type: none"> • Campus selection • Other than campus recruitment 	- 10 %
Entrepreneurship/Self-employment	-

30. Details of Infrastructural facilities

- a) Library: 500 books
- b) Internet facilities for Staff & Students: Yes
- c) Class rooms with ICT facility: NIL
- d) Laboratories: Yes

31. Number of students receiving financial assistance from college, university, Government or other agencies: 150

32. Details on student enrichment programmes (special lectures/ workshops/Seminar) with external experts: 5 Guest Lectures per year

33. Teaching methods adopted to improve student learning: Lecture, Interactive and Demonstrative Method

34. Participation in Institutional Social Responsibility (ISR) and Extension activities:

- Participated in NSS Programs.
- Conducted awareness program on protecting from Thunder Bolt strikes.

35. SWOC analysis of the department and Future plans:

- **Strength**
 - Well experienced Asst. Professor
 - Well Equipped Laboratory
- **Weakness**
 - Insufficient area for the Laboratory
- **Opportunities**
 - Students selection in various departments i.e., J.E in Telecom. Software Engineers, Computer Technicians, Lab Technicians etc.
 - In addition to that regular selections like Lecturers, Teachers, Group-I, Group-II, Police Constables & Bank Employees.
- **Challenges**
 - Lack of supporting staff
- **Future Plans**
 - We are going to establish a workshop unit with students in our college to repair fans, computers and all electrical equipments.
 - We would like to conduct a certificate course on “House Wiring”.
 - We would like to start a Post-Graduate Course in M.Sc. Physics.
 - We would like to conduct a National Seminar on “Thin Films”.

DEPARTMENT OF CHEMISTRY

1. Name of the Department: CHEMISTRY
2. Year of Establishment: 1993
3. Names of Programmes/ Courses offered
 - a) UG : YES
 - b) PG : NIL
 - c) M.Phil : NIL
 - d) Ph.D : NIL
 - e) Integrated Masters: NIL
 - f) Integrated Ph.D : NIL
4. Names of Interdisciplinary courses and the departments/ units involved: NIL
5. Annual / semester / choice based credit system (programme wise): Annual
6. Participation of the department in the courses offered by other departments: NIL
7. Courses in collaboration with other universities, industries, foreign institutions, etc.:NIL
8. Details of courses / programmes discontinued (if any) with reasons:
 - BSc(BIO-CHEMISTRY/ZOOLOGY/CHEMISTRY) Lack of Strength
 - BSc(BOTONY/ZOOLOGY/INDUSTRIAL CHEMISTRY) Lack of Strength
9. Number of teaching posts

Designation	Sanctioned	Filled
Professors	NIL	NIL
Associate Professors	NIL	NIL
Assistant Professors / Lecturers	5	5

10. Faculty profile with name, qualification, designation, specialization (D.Sc./ D.Litt./ Ph.D/ M. Phil. etc.)

Name	Qualification	Designation	Specialization	Experience in years	No. of Ph.D students guided for the last 4 years
Sri M. Ramachandra	M.Sc.	Lecturer	Organic Chemistry	15	NIL
Sri J. Venkataramana	M.Sc.	PTL	Physical chemistry	21	NIL

Sri. B. Bhaskar Reddy	M.Sc., M.Phil.	PTL	Inorganic chemistry	19	NIL
Kum. A. Rukmini	M.Sc., M.Phil.	Contract	Inorganic chemistry	09	NIL
Sri. N. Raghu Prasad	M.Sc.	Contract	Organic chemistry	09	NIL

11. List of senior visiting faculty: 04

- 1) Prof. L.K. Ravindranath, SKU, Anantapur.
- 2) Prof. K. Hussain Reddy, SKU, Anantapur.
- 3) Prof. P. Venkataramana, SKU, Anantapur.
- 4) Prof. C. Suresh Reddy, SKU, Anantapur.

12. Percentage of lecturers delivered and practical classes handled (Program wise) by temporary faculty: NIL

13. Student – Teacher ratio (Program wise):215:5

14. Number of academic support staff (technical) and administrative staff ; sanctioned and filled: NIL

15. Qualifications of teaching faculty with DSc/ D. Litt/ Ph.D/ M.Phil/ P.G.:

M.Phil-2,P.G.-3

16. Number of faculty with ongoing projects from funding agencies and grants received.

- a) National : NIL
- b) International: NIL

17. Department projects funded by DST-FIST; UGC, DBT, ICSSR, etc. and total grants received: NIL

18. Research centre / facility recognized by the university: NIL

19. Publications:

- Publication per faculty: Sri. B. Bhaskar Reddy has got published a paper in Indian Journal of Chemistry
- Number of papers published in peer reviewed journals (National / International) by faculty and students.: NIL
- Number of publications listed in International database (For Eg. Web of Science, Scopus, Humanities International Complete, Dare Database, International social sciences directory, EBSCO host, etc.) : NIL
- Monographs: NIL
- Chapters in books: NIL
- Books edited: NIL

- Books with ISBN/ISSN numbers with details of publishers
- Citation Index:
- SNIP:NIL
- SJR:NIL
- Impact factor: NIL
- h-index: NIL

20. Areas of consultancy and income generated: A nodal consultant agency for local school teacher and Jr. Lecturers

21. Faculty as members in

- a) National committees: NIL
- b) International Committees: NIL
- c) Editorial Boards: NIL

22. Student projects

- a) Percentage of students who have done in-house projects including interdepartmental/programme: 30%
- b) Percentage of students placed for projects in organizations outside the institution i.e.in Research laboratories/Industry/other agencies: NIL

23. Awards/ Recognitions received by faculty and students: NIL

24. List of eminent academicians and scientists/ visitors to the department:

Prof. K. Hussain Reddy, Professor of SKU, Anantapur.

Prof. L.K. Ravindranath, SKU, Anantapur.

25. Seminars/ Conferences/Workshops organized & the source of funding

- a)National: NIL
- b)International: NIL

26. Student profile programme/course wise:

Name of the Course/programme (refer question no. 4)	Applications received	Selected	Enrolled		Pass percentage
			M	F	
I BSc	123	58	20	27	74.5 %
II BSc	100	100	52	48	62 %
II BSc	80	65	36	29	72 %

27. Diversity of Students

Name of the Course	% of students from the Same state	% of students from other States	% of students from abroad
BZC, MPC, CZS	100%	NIL	NIL

28. How many students have cleared national and state competitive examinations such as NET, SLET, GATE, Civil services, Defense services, etc.?:

2 Students cleared CSIR exam and they are pursuing research. One student in CDRI, Lucknow and other students in SV University, Tirupathi.

29. Student progression

Student progression	Against % enrolled
UG to PG	40 %
PG to M.Phil.	NIL
PG to Ph.D.	NIL
Ph.D. to Post-Doctoral	NIL
Employed <ul style="list-style-type: none"> • Campus selection • Other than campus recruitment 	NIL
Entrepreneurship/Self-employment	NIL

30. Details of Infrastructural facilities

- a) Library: 2000 books
- b) Internet facilities for Staff & Students: Yes
- c) Class rooms with ICT facility: NIL
- d) Laboratories: 2

31. Number of students receiving financial assistance from college, university, Government or other agencies: 200

32. Details on student enrichment programmes (special lectures/workshops/Seminar) with external experts: 3 Guest Lectures by eminent academicians working in universities.

33. Teaching methods adopted to improve student learning: Lecture Method and Interactive Method.

34. Participation in Institutional Social Responsibility (ISR) and Extension activities: Participated in Ozone Day rally, AIDS Day and NSS Activities.

35. SWOC analysis of the department and Future plans:-

- **Strengths**
 - Hardworking, dedication and some innovative thinking to make use of available resources for getting maximum benefit is the main strength of the department.
 - Qualified staff with considerable experience both in teaching and research.
 - Good employment opportunity.
- **Weakness**
 - Most of the students are from rural area, lack proper foundation in English is a bane.
- **Opportunities**
 - Can get many jobs with good communication skills.
 - Good demand for English teacher and lecturers with the mushrooming of corporate educational institutions.
 - Can get a job anywhere under the sky.
 - Lot of demand in BPO/Medical transcription industry.
- **Challenges**
 - Regionalism and vernacular language consciousness is a big challenge to the department.
- **Future Plans**
 - Contemplates starting of P.G. Course and a Diploma Course in Spoken English very shortly.
 - Desires to start a separate certificate course to housewives and working women.
 - Strongly desires to organize a national seminar on Trends and techniques in imparting spoken english
 - Wishes to start a literary magazine
 - Wishes to conduct periodical practicals and workshops for teachers of English in and around the Kadiri region.
 - Plans to send our JKC trained students to rural schools to teach English at regular intervals.

DEPARTMENT OF COMPUTER SCIENCE

1. Name of the Department: **COMPUTER SCIENCE**
2. Year of Establishment: **2005**
3. Names of Programmes/ Courses offered
 - a) UG : **YES**
 - b) PG : **NIL**
 - c) M.Phil : **NIL**
 - d) PhD : **NIL**
 - e) Integrated Masters: **NIL**
 - f) Integrated Ph.D : **NIL**
4. Names of Interdisciplinary courses and the departments / units involved: **NIL**
5. Annual / semester / choice based credit system (programme wise): **Annual**
6. Participation of the department in the courses offered by other departments: **NIL**
7. Courses in collaboration with other universities, industries, foreign institutions, etc.: **NIL**
8. Details of courses / programmes discontinued (if any) with reasons: **NIL**
9. Number of teaching posts

Designation	Sanctioned	Filled
Professors	NIL	NIL
Associate Professors	NIL	NIL
Assistant Professors / Lecturers	0	1 Guest faculty is Engaged

10. Faculty profile with name, qualification, designation, specialization (D.Sc./ D.Litt./Ph.D/ M. Phil. etc.)

Name	Qualification	Designation	Specialization	Experience in years	No. of Ph.D., students guided for the last 4 years
K. Siva Kumar	M.C.A	Guest Faculty	Computer Application	4	NIL

11. List of senior visiting faculty: **NIL**

12. Percentage of lecturers delivered and practical classes handled (Program wise) by temporary faculty: NIL
13. Student – Teacher ratio (Program wise): 97:1.
14. Number of academic support staff (technical) and administrative staff ; sanctioned and filled: NIL
15. Qualifications of teaching faculty with DSc/ D. Litt/ Ph.D/ M.Phil/ P.G.: P.G-1.
16. Number of faculty with ongoing projects from funding agencies and grants received.
 - a) National : NIL
 - b) International: NIL
17. Department projects funded by DST-FIST; UGC, DBT, ICSSR, etc. and total grants received :NIL
18. Research centre / facility recognized by the university: NIL
19. Publications:
 - Publication per faculty
 - Number of papers published in peer reviewed journals (National/ International) by faculty and students.
 - Number of publications listed in International database (For Eg: Web of Science, Scopus, Humanities International Complete, Dare Database, International social sciences directory, EBSCO host, etc.)
 - Monographs: NIL
 - Chapters in books: NIL
 - Books edited: NIL
 - Books with ISBN/ISSN numbers with details of publishers: NIL
 - Citation Index:
 - SNIP: NIL
 - SJR: NIL
 - Impact factor: NIL
 - h-index: NIL
20. Areas of consultancy and income generated: NIL
21. Faculty as members in
 - a) National committees: NIL
 - b) International Committees:
 - c) Editorial Boards: NIL

22. Student projects

- a) Percentage of students who have done in-house projects including interdepartmental/programme: 10 %
- b) Percentage of students placed for projects in organizations outside the institution i.e.in Research laboratories/Industry/other agencies: NIL

23. Awards/ Recognitions received by faculty and students: NIL

24. List of eminent academicians and scientists/ visitors to the department: NIL

25. Seminars/ Conferences/Workshops organized & the source of funding

- a) National : NIL
- b) International: NIL

26. Student profile programme/course wise:

Name of the Course/programme (refer question no. 4)	Applications received	Selected	Enrolled		Pass percentage
			Male	Female	
I B.SC MPCS	27	27	24	03	
II B.SC MPCS	52	52	33	19	
III B.SC MPCS	29	29	18	11	

27. Diversity of Students

Name of the Course	% of students from the Same state	% of students from other States	% of students from abroad
I YEAR	100%	NIL	NIL
II YEAR	100%	NIL	NIL
III YEAR	100%	NIL	NIL

28. How many students have cleared national and state competitive examinations such as NET, SLET, GATE, Civil services, Defense services, etc. ? : NIL

29. Student progression

Student progression	Against % enrolled
UG to PG	30%
PG to M.Phil.	NIL
PG to Ph.D.	NIL
Ph.D. to Post-Doctoral	NIL

Employed	NIL
• Campus selection	NIL
• Other than campus recruitment	
Entrepreneurship/Self-employment	NIL

30. Details of Infrastructural facilities

- a) Library: 40 books
- b) Internet facilities for Staff & Students: Yes
- c) Class rooms with ICT facility: Yes
- d) Laboratories: Yes

31. Number of students receiving financial assistance from college, university, Government or other agencies: 60

32. Details on student enrichment programmes (special lectures/workshops/Seminar) with external experts: Seminars

33. Teaching methods adopted to improve student learning: Lecture cum demonstration.

34. Participation in Institutional Social Responsibility (ISR) and Extension activities:

35. SWOC analysis of the department and Future plans:

- **Strengths**
 - Hardworking, dedicated staff.
 - High demand for Computer Science.
 - Good employment opportunity.
 - International and bread winning Course.
- **Weakness**
 - Most of the students are from rural area, lack proper foundation in Computers is a bane.
- **Opportunities**
 - Can get jobs with good communication skills.
 - Good demand for Computer teacher and lecturers with the mushrooming of corporate educational institutions.
 - Lot of demand in DTP, BPO and software industry.
- **Challenges**
 - Lack of regular staff is the biggest challenge.

- **Future Plans**

The Department

- Contemplates starting of P.G. Course and a Diploma Course in Computers.
- Desires to start a certificate course to housewives and working women.

DEPARTMENT OF BOTANY

1. Name of the Department: BOTANY
2. Year of Establishment: 1992
3. Names of Programmes/ Courses offered
 - a) UG : B.Sc., (BZC)
 - b) PG : NIL
 - c) M.Phil : NIL
 - d) Ph.D : NIL
 - e) Integrated Masters: NIL
 - f) Integrated Ph.D :NIL
4. Names of Interdisciplinary courses and the departments / units involved: NIL
5. Annual / semester / choice based credit system (programme wise): Annual
6. Participation of the department in the courses offered by other departments: NIL
7. Courses in collaboration with other universities, industries, foreign institutions, etc.:
NIL
8. Details of courses/ programmes discontinued (if any) with reasons: BZIC., Students not opted
9. Number of teaching posts

Designation	Sanctioned	Filled
Professors	NIL	NIL
Associate Professors	NIL	NIL
Assistant Professors/ Lecturers	2	2

10. Faculty profile with name, qualification, designation, specialization (D.Sc. / D.Litt./Ph.D/ M. Phil. etc.)

Name	Qualification	Designation	Specialization	Experience in years	No. of Ph.D., students guided for the last 4 years
Smt. V. Leelavathi	M.Sc., M.Phil.	Asst. Professor	Botany	13	NIL
Smt. K. Sreedevi	M.Sc., B.Ed., M.Phil.	Asst. Professor	Botany	5	NIL

11. List of senior visiting faculty:

- 1) Dr. Ravi Prasad Rao, Head, Dept. of Botany, SKU, Ananthapuramu
- 2) Dr. Sampath Kumar, Principal Scientist, Regional Agricultural Centre
- 3) Dr. S. Smitha, Head, Dept. of Sericulture, STSN Govt. Degree College, Kadiri

12. Percentage of lecturers delivered and practical classes handled (Program wise) by temporary faculty: NIL

13. Student – Teacher ratio (Program wise): 76:1

14. Number of academic support staff (technical) and administrative staff sanctioned and filled: NIL

15. Qualifications of teaching faculty with DSc/ D. Litt/ Ph.D/ M.Phil/ P.G.: M.Phil/ P.G.

16. Number of faculty with ongoing projects from funding agencies and grants received.

- a) National : NIL
- b) International: NIL

17. Department projects funded by DST-FIST; UGC, DBT, ICSSR, etc. and total grants received :NIL

18. Research centre / facility recognized by the university: NIL

19. Publications:

- Publication per faculty: 02
- Number of papers published in peer reviewed journals (National/ International) by faculty and students. NIL
- Number of publications listed in International database (For Eg: Web of Science, Scopus, Humanities International Complete, Dare Database, International social sciences directory, EBSCO host, etc.)
- Monographs: NIL
- Chapters in books: 1
- Books edited: NIL
- Books with ISBN/ISSN numbers with details of publishers
- Citation Index:
- SNIP:NIL
- SJR:NIL
- Impact factor: NIL
- h-index: NIL

20. Areas of consultancy and income generated: Nursery, forestry department of Kadiri.

21. Faculty as members in

- a) National committees: NIL
- b) International Committees: NIL
- c) Editorial Boards: NIL

22. Student projects

- a) Percentage of students who have done in-house projects including interdepartmental/programme: 30% of the students were involved in Taxonomy, Pharmacology and ecology.
- b) Percentage of students placed for projects in organizations outside the institution i.e.in Research laboratories/Industry/other agencies: NIL

23. Awards/ Recognitions received by faculty and students: NIL

24. List of eminent academicians and scientists/ visitors to the department

- 1) Prof. Prasad Rao
- 2) Dr. Sampath Kumar
- 3) Dr. Veerabhadrappa
- 4) Dr. S. Smitha
- 5) Dr. K.Siva Prasad

25. Seminars/ Conferences/Workshops organized & the source of funding

- a) National: NIL (Regional seminar was organized by Mrs. V. Leelavathi on Biodiversity) Self – funding.
- b) International: NIL

26. Student profile programme/course wise:

Name of the Course/programme (refer question no. 4)	Applications received	Selected	Enrolled		Pass percentage
			Male	Female	
I BZC	80	80	26	54	
II BZC	47	47	16	31	87.8 %
III BZC	40	40	18	26	96.7 %

27. Diversity of Students

Name of the Course	% of students from the Same state	% of students from other States	% of students from abroad
B.Sc., BZC	100%	NIL	NIL

28. How many students have cleared national and state competitive examinations such as NET, SLET, GATE, Civil services, Defense services, etc.? ONE Candidate has been qualified for NET in 2007.

29. Student progression

Student progression	Against % enrolled
UG to PG	10%
PG to M.Phil.	5%
PG to Ph.D.	5%
Ph.D. to Post-Doctoral	2%
Employed <ul style="list-style-type: none"> • Campus selection • Other than campus recruitment 	20%
Entrepreneurship/Self-employment	

30. Details of Infrastructural facilities

- a) Library: Yes
- b) Internet facilities for Staff & Students: NIL
- c) Class rooms with ICT facility: NIL
- d) Laboratories: Yes

31. Number of students receiving financial assistance from college, university, Government or other agencies: 80% of the students are receiving Social Welfare Scholarships from the State Government of AP.

32. Details on student enrichment programmes (special lectures / workshops / Seminar) with external experts: 3 Guest lectures were organized.

33. Teaching methods adopted to improve student learning:

Lecture cum demonstration, Project method, and Practical method.

34. Participation in Institutional Social Responsibility (ISR) and Extension activities: The College Staff and Students were participated in rally on International AIDS Day and International Ozone Day.

35. SWOC analysis of the department and Future plans:

- **Strengths**
 - Fully pledged staff, Regular Experienced staff
 - Fully equipped lab
 - Anxious students
 - Medicinal plants are available in around the locality
 - The locality is very suitable for botanical locality visit.
- **Weakness**
 - Lack of infrastructure
 - Water scarcity to develop botanical garden
 - Lack of group combination along with Bio-technology and Micro-Biology
 - BZIC group abolished due to lack of strength
 - Lack Net facility
 - Lecturer, student ratio is not appropriate i.e., 1:85
- **Opportunities:**
 - Can go for PG in various Universities.
 - Can become Lecturer/ teacher in private/ Govt sector
 - Can maintain nursery (vegetable).
 - Can become Florist in (Horticulture) garden.
- **Challenges**
 - Protection of Botanical Garden and Medicinal Plants is very difficult due to scarcity of water.
 - Improving admissions on per with the Private Degree Colleges.
- **Future Plans**
 - Development of Botanical garden.
 - Planting medicinal Plants.
 - Planting latest Hybrid Plants.
 - Encouraging Students to study life sciences.
 - Motivating students to adopt local slum areas.
 - Planting plants in the town with the help of forest department.
 - Encouraging students to adopt a tree each one in a study of course.
 - Motivating the students to investigate the new plants.
 - Educate the people to maintain greenery.

- Encouraging the meritorious students to do research work.
- Telling the importance of trees to other non-science students.

DEPARTMENT OF ZOOLOGY

1. Name of the Department: ZOOLOGY
2. Year of Establishment: 1992
3. Names of Programmes/ Courses offered
 - a) UG : B.Sc., (BZC & CZS)
 - b) PG : NIL
 - c) M.Phil : NIL
 - d) Ph.D : NIL
 - e) Integrated Masters: NIL
 - f) Integrated Ph.D : NIL
4. Names of Interdisciplinary courses and the departments/ units involved: NIL
5. Annual / semester / choice based credit system (programme wise): Annual
6. Participation of the department in the courses offered by other departments: NIL
7. Courses in collaboration with other universities, industries, foreign institutions, etc.:
NIL
8. Details of courses / programmes discontinued (if any) with reasons: BZIC – Students not opted
9. Number of teaching posts

Designation	Sanctioned	Filled
Professors	--	--
Associate Professors	--	--
Assistant Professors / Lecturers	3	3

10. Faculty profile with name, qualification, designation, specialization (D.Sc./ .Litt./Ph.D/ M. Phil. etc.)

Name	Qualification	Designation	Specialization	Experience in years	No. of Ph.D., students guided for the last 4 years
D. Adinarayana	M.Sc., B.Ed., M.Phil.	Asst. Professor	Zoology	4	NIL
C. Lakshmi Reddy	M.Sc., M.Phil.	PTL	Zoology	15	NIL
K. Aravind Reddy	M.Sc	PTL	Sericulture	16	NIL

11. List of senior visiting faculty:

- 1) Dr. P. Giridhar, Lecturer in Zoology, Govt. College(M), Anantapur.
- 2) Mr. S. Prasanth, Lecturer in Zoology, Govt. Jr. College, Kadiri.

12. Percentage of lecturers delivered and practical classes handled (Program wise) by temporary faculty: NIL

13. Student – Teacher ratio (Program wise): 200:3

14. Number of academic support staff (technical) and administrative staff ; sanctioned and filled: NIL

15. Qualifications of teaching faculty with DSc/ D. Litt/ Ph.D/ M.Phil/ P.G.:P.G-3.

16. Number of faculty with ongoing projects from funding agencies and grants received.

a) National : NIL

b) International: NIL

17. Department projects funded by DST-FIST; UGC, DBT, ICSSR, etc. and total grants received :NIL

18. Research centre / facility recognized by the university: NIL

19. Publications:

- Publication per faculty
D. Adinarayana got published 1 proceedings and 1 article in International Journal.
D. Adinarayana attended 4 National/ International Seminars.
D. Adinarayana published 4 abstracts in National/ International Seminars
- Number of papers published in peer reviewed journals (National/ International) by faculty and students.
- Number of publications listed in International database (For Eg. Web of Science, Scopus, Humanities International Complete, Dare Database, International social sciences directory, EBSCO host, etc.): NIL
- Monographs: NIL
- Chapters in books: 1
- Books edited: NIL
- Books with ISBN/ISSN numbers with details of publishers
- Citation Index: NIL.
- SNIP:NIL
- SJR:NIL

- Impact factor: NIL
- h-index: Elsevier and Science Direct

20. Areas of consultancy and income generated: NIL

21. Faculty as members in

- a) National committees: NIL
- b) International Committees: NIL
- c) Editorial Boards: NIL

22. Student projects

- a) Percentage of students who have done in-house projects including interdepartmental/programme:
50% of the students were done live projects in Biochemistry and Aquaculture
- b) Percentage of students placed for projects in organizations outside the institution i.e.in Research laboratories/Industry/other agencies : NIL

23. Awards/ Recognitions received by faculty and students: NIL

24. List of eminent academicians and scientists/ visitors to the department: NIL

25. Seminars/ Conferences/Workshops organized & the source of funding

- a) National: NIL
- b) International: NIL

26. Student profile programme/course wise:

Name of the Course/programme (refer question no. 4)	Applications received	Selected	Enrolled		Pass percentage
			Male	Female	
I BZC	80	80	46	34	-----
I CZC	20	20	15	05	-----
III BZC	35	35	18	17	100%
II BZC	44	44	24	20	100%

27. Diversity of Students

Name of the Course	% of students from the Same state	% of students from other States	% of students from Abroad
B.Sc., BZC & CZS	100%	NIL	NIL

28. How many students have cleared national and state competitive examinations such as NET, SLET, GATE, Civil services, Defense services, etc. ?

ONE Candidate has been qualified for NET in 2007.

29. Student progression

Student progression	Against % enrolled
UG to PG	20%
PG to M.Phil.	NIL
PG to Ph.D.	5%
Ph.D. to Post-Doctoral	NIL
Employed <ul style="list-style-type: none"> • Campus selection • Other than campus recruitment 	12%
Entrepreneurship/Self-employment	NIL

30. Details of Infrastructural facilities

- a) Library: Yes, 100 volumes
- b) Internet facilities for Staff & Students: Yes
- c) Class rooms with ICT facility: No ICT Facility
- d) Laboratories: Yes

31. Number of students receiving financial assistance from college, university, Government or other agencies: 80% of the students are receiving Social Welfare Scholarships from the State Government of AP.

32. Details on student enrichment programmes (special lectures/workshops/Seminar) with external experts: Lecture cum demonstration, Project method, and Practical method.

33. Teaching methods adopted to improve student learning: Model Preparations

34. Participation in Institutional Social Responsibility (ISR) and Extension activities: The College Staff and Students were participated in rally on International AIDS Day and International Ozone Day.

35. SWOC analysis of the department and Future plans:

❖ **Strength**

- Well Equipped lab
- Experienced staff
- Good demand for Zoology

❖ **Weakness**

- Lack of Lab supporting staff

❖ **Opportunity**

Most of the students were acquired various positions in the Government sector. i.e. Education department, Police department, Revenue department, Banking, Medical and Para medical etc..

❖ **Challenges**

- Space shortage of Lab equipments.

❖ **Future Plans**

- We would like to start PG Course (M.Sc Zoology)
- We would like to conduct a certificate course on “Biodiversity and Ecological aspects”.
- We would like to conduct a National Seminar on “Life Sciences”.

DEPARTMENT OF SERICULTURE

1. Name of the Department: SERICULTURE
2. Year of Establishment: 1993
3. Names of Programmes/Courses offered
 - a) UG : B.Sc., (BZC & CZS)
 - b) PG : NIL
 - c) M. Phil. : NIL
 - d) Ph. D. : NIL
 - e) Integrated Masters: NIL
 - f) Integrated Ph.D. : NIL
4. Names of Interdisciplinary courses and the departments/ units involved: Dept. of Zoology and Chemistry
5. Annual/ semester/ choice based credit system (programme wise): Annual
6. Participation of the department in the courses offered by other departments:
 - Participation of students in the training course, offered by the department of Biotechnology for a period of 21 days, in Sericulture at Bivoltine training centre, Hindupur.
 - Participation in a training class offered by AP State department of Sericulture in farming and grainage, rearing activities participation involved the faculty and students in the certificate course in computers by department of NWRC & JKC also dept. of Computers.
 - Participation in programme by APMAS water conservation watershed.
7. Courses in collaboration with other universities, industries, foreign institutions, etc.:
Community College in Sericulture with State Board of Technical Education, A.P., Hyderabad which is recommended by the CCE, A.P. Hyderabad and is under process and likely to sanction.
8. Details of courses / programmes discontinued (if any) with reasons:
B.Sc., BZS;
 - a) BZS group possess the optional viz., Botany, Zoology and Sericulture which was discontinued as it is made mandatory to have chemistry as one of the optional in the field of life sciences.

9. Number of teaching posts

Designation	Sanctioned	Filled
Professors	NIL	NIL
Associate Professors	NIL	NIL
Assistant Professors / Lecturers	2	2

10. Faculty profile with name, qualification, designation, specialization

(D.Sc/D.Litt./Ph.D/M. Phil. etc.)

Name	Qualification	Designation	Specialization	Experience in years	No. of Ph.D., students guided for the last 4 years
Dr. S. Smitha	M.Sc.,M.Phil., Ph.D.	Reader	Sericulture	17	NIL
Ch. Appiya Chinnamma	M.Sc., B.Ed.,(Ph.D.), PGDS	Lecturer	Sericulture	15	NIL

11. List of senior visiting faculty: 5

- 1) Prof. Vijaya Bhaskar Rao; Dept. of Environmental Science & Biotechnology, University of Puducherry.
- 2) Prof. Sankar Naik; Dept. of Sericulture, S.K. University.
- 3) Prof. Chinna swamy; Dept. of Sericulture, GKVK, Bangalore.
- 4) Dr. Seshagiri; Scientist, APSSRDI, Kirikera.
- 5) Dr. Nazeer Ahammad; Scientist –B, CSR&TI, CSB, Pampore, J&K.
- 6) Dr. Satyanarayana; Asst. Prof. Dept. of Sericulture, SKU, Anantapur.
- 7) Dr. N. Sivarami Reddy, Scientist - B, RSRS, Madakasira.

Inspectors, AD's, JD are from department of Sericulture.

12. Percentage of lecturers delivered and practical classes handled (Program wise) by temporary faculty:

The regular faculty of the department justifies the completion of the curriculum as per the AAP and no temporary faculty was involved for the last 4 years.

13. Student – Teacher ratio (Program wise): 20:1

14. Number of academic support staff (technical) and administrative staff; sanctioned and

filled: NIL

15. Qualifications of teaching faculty with DSc/ D. Litt/ Ph.D/ M.Phil/ P.G.: Ph.D-2.

16. Number of faculty with ongoing projects from funding agencies and grants received.

- 1) Proposal submitted for major research project UGC/DBT, Minor research project UGC.

17. Department projects funded by DST-FIST; UGC, DBT, ICSSR, etc. and total grants received : Minor research project sponsored by UGC

Grants received Rs.75, 000/- by UGC.

18. Research centre / facility recognized by the university:NIL

- a) Although the institution / dept. do not possess any recognized research centre, the department has necessary infrastructure to conduct research in sericulture. Further, the UGC - committee of the institution provides the information regarding promotion of research activities.
- b) Dr. S. Smitha, Reader in Sericulture involves in the research activity / projects/seminar organization with other research institutions/universities like University of Puducherry, Pondicherry, S.K. University, Anantapur, Sri Padmavathi Mahila University, Tirupati etc.

19. Publications:

- Publication per faculty: Yes
- Number of papers published in peer reviewed journals (National / International) by faculty and students: 10
- Number of publications listed in International database (For Eg. Web of Science, Scopus, Humanities International Complete, Dare Database, International social sciences directory, EBSCO host, etc.): 09
- Monographs:NIL
- Chapters in books: 01, Heamolymph trehalose and fat body glycogen phosphorylase interrelationship in silkworm *Bombyx mori*.L chronically exposed to fluoride published in a book on “Recent trends in Sericulture” published by Narendra Publishing House, New Delhi – 110006 (India) in 2001.
- Books edited:02 -
 1. Selenium and Silkworms by Discovery Publishing House Pvt. Limited, New Delhi in 2012

2. Proceedings on “Cutting edge technologies in Vanya Silk Research – India in 2012

- Books with ISBN/ISSN numbers with details of publishers –

1. Selenium and Silkworms by Discovery Publishing House Pvt. Limited, New Delhi in 2012- ISBN No. 978 – 93 – 5056 -118 - 8

2. Proceedings on “Cutting edge technologies in Vanya Silk Research – India in 2012 – ISBN No – 978 – 93 807 30 – 01 -1

- Citation Index:
- SNIP:NIL
- SJR:NIL
- Impact factor:
- h-index:

20. Areas of consultancy and income generated:

- The department has a non – profit consultancy with private/public schools and junior colleges to make the students aware of Agrobased cottage industrial activities and conservation of ecoraces in silkworms.
- Voluntary services through “Farmers Technical Service Center”
- Nursery preparation and supplied at free of cost to the farmers
- Preparation of Vermicompost in vermitechs.
- Awareness on Disinfection, preparation and supply of disinfectants and maintenance of hygiene.

21. Faculty as members in

- a) National committees: Nil
- b) International Committees: Nil
- c) Editorial Boards: Nil

22. Student projects

- a) Percentage of students who have done in-house projects including interdepartmental/programme: 30%
- b) Percentage of students placed for projects in organizations outside the institution i.e.in Research laboratories/Industry/other agencies: 60%

23. Awards/ Recognitions received by faculty and students

- Dr. S. Smitha received the “State Best Teacher Award” in 2010

24. List of eminent academicians and scientists/ visitors to the department

- 1) Prof. Vijaya Bhaskar Rao; Dept. of Environmental Science & Biotechnology, University of Puducherry.
- 2) Prof. Sankar Naik; Dept. of Sericulture, S.K. University.
- 3) Prof. Chinna swamy; Dept. of Sericulture, GKVK, Bangalore.
- 4) Dr. Seshagiri; Scientist, APSSRDI, Kirikera.
- 5) Dr. Nazeer Ahammad; Scientist –B,CSR&TI, CSB, Pampore, J&K.
- 6) Dr. Satyanarayana; Asst. Prof. Dept. of Sericulture, SKU, Anantapur.
- 7) Dr. N. Sivarami Reddy, Scientist - B, RSRS, Madakasira.
- 8) Smt. Aruna Kumari, Joint Director, State Dept. of Sericulture

And many others from Junior colleges and state dept. of Sericulture.

25. Seminars/ Conferences/Workshops organized & the source of funding

- a) National: One National Seminar on “Vanyasilks” has been conducted with the sponsorship of DBT, New Delhi, UGC, New Delhi, APSCHI, Hyderabad.
- b) Active member in Conduct of National workshop on “Bio informatics” by S.K. University, Anantapur.
- c) International: Active member in conduct of International Seminar on “Trends in Seribiotechnology” – in 2008 by the Dept. of Sericulture, S.K.U.

26. Student profile programme/course wise:

Name of the Course/programme (refer question no. 4)	Applications received	Selected	Enrolled		Pass percentage
			Male	Female	
B.Sc. (ZSC)	30	20	15	05	100%

27. Diversity of Students

Name of the Course	% of students from the Same state	% of students from other States	% of students from abroad
B.Sc. (ZSC)	100%	Nil	Nil

28. How many students have cleared national and state competitive examinations such as NET, SLET, GATE, Civil Services, Defense services, etc.? : NA –

29. Student progression

Student progression	Against % enrolled
UG to PG	50%
PG to M.Phil.	10%
PG to Ph.D.	5%
Ph.D. to Post-Doctoral	Nil
Employed	
• Campus selection	Nil
• Other than campus recruitment	60%
Entrepreneurship/Self-employment	10%

30. Details of Infrastructural facilities

- a) Library: Yes
- b) Internet facilities for Staff & Students: Staff has Internet facility through UGC –NWRC and students shown different subject related video clippings downloaded from different web sources. They are also advised to utilise the facility when ever needed under the strict vigilance of staff.
- c) Class rooms with ICT facility: Yes
- d) Laboratories: One Lab for practicals, Small room for Silk worm rearing and reeling of cocoons.

31. Number of students receiving financial assistance from college, university, Government or other agencies:

More than 80% of the students, every year do receive financial assistance in the form of Scholarships, fee reimbursement from the government.

32. Details on student enrichment programmes (special lectures / workshops /Seminar) with external experts:

- Guest Lectures are arranged by inviting the professors from different research units.
- Students along with staff attend different workshops/Ryothu mela conducted by the State Sericulture department in grainages, Cocoon Markets and Industrial area in Kadiri.
- One National Seminar has been conducted by the department itself in which students have a very good interaction with Scientists and experts from research stations, colleges, institutions of A.P. and Karnataka.

- Trainings, in various sericulture activities, in learning of advanced agronomic practices and technologies.
- Class room seminars and group discussions under the supervision.
- Regular Field trips to different research and industrial units to study the constraints of the industry at field level.
- Study projects in the concerned area are assigned to the students and encouraged to study the marketing and economic feasibilities by taking the end product to the commercial areas.

33. Teaching methods adopted to improve student learning:

The traditional “chalk and talk” method of teaching that’s persisted for hundreds of years is now acquiring inferior results when compared with the more modern and revolutionary teaching methods that are available for use today. Greater student interaction is encouraged, the boundaries of authority are being broken down, and a focus on enjoyment over grades is emphasized. The following are the methods so far used.

Spaced Learning	Flexible Fridays	Engagement	Lecture Method
Demonstration	Discussion	Collaborative	Inductive method
Deductive Method	Huristic	Recitation	Debate
Reading assignments in journals	Flash cards, Flowcharts	Field trips, Class projects, Individual projects	Making of posters by students
Audio-tutorial lessons (individualized instruction) Models	Use of community or local resources	Technology and instructional resources	Studying local history Collect old magazines
Small groups such as task oriented, discussion, Socratic	Textbook assignments Photographs Laboratory experiment	Open textbook tests, take home tests Put idea into picture	Use of diagrams, tables, graphs, and charts by instructor in teaching

34. Participation in Institutional Social Responsibility (ISR) and Extension activities:

- Establishment of Paper plate moulding unit, with the funding of UGC innovative education scheme to give free training to make students self reliant, and the project entitled “Pollution in Kadiri due to plastics” has been under taken by faculty by name Dr.S.Smitha , K.Aravinda Reddy and Dr. S.Saleem basha
- Contributed towards construction of Student cycle stand in the campus.
- As a coordinator of Women empowerment cell, conducted awareness programmes to empower the rural women folk through self income generative entrepreneurial activities s like growing of leafy vegetables on wall mountings, Bird rearing, preparation of handicrafts using cocoons, Painting of sarees etc.
- Participated in indo American free eye camp at Kalasamudram, Kadiri.
- Donated cloths and bed spreads to old senior citizens in old age home at Malakavemula.

35. SWOC analysis of the department and Future plans:

SWOC Analysis Summary (with importance ranking)		
Date:10.7.2013		Name of the department: SERICULTURE
STRENGTHS		Importance (High/Medium/Low)
S1.	Well established sericulture industry surrounding the campus	High
S2.	Committed, communicative, compassionate, creative, experienced and value based staff.	High
S3	Sufficient infrastructure in the lab and cultivable land for training	High
S4	Quality assurance of the course through vigorous trainings and field trials.	High
S5.	Able to utilize Plenty of expertise human resources from the neighboring institutes due to linkages developed for student enrichment	High
S6.	Able to meet demands of the industry through generation of trained human resources and also to make them self reliant	High
S7.	Conduct of need-based training programmes to polish the right edges.	Medium
S8	Apart from the subject, multifaceted trainings to students to face the challenges in life effectively and	Medium

	efficiently	
S9	Self sustained students alumni as models to fresher's	Medium
WEAKNESSES		Importance (H/M/L)
W1.	Lack of sufficient Irrigation water for mulberry garden.	High
W2.	Lack of a separate time table to make the students concentrate on field work.	Medium
W3.	Lack of Spacious rearing room for silkworms.	High
OPPURTUNITIES		Importance (H/M/L)
O1.	To prepare students to take up higher education to become scientists, researchers, consultants and teachers, with core competencies.	High
O2.	To ensure remunerative employment in villages for rural students.	High
O3.	To promote industry / organization, interaction / collaborations with regional, national and international bodies.	Medium
CHALLENGES		Importance (H/M/L)
C1.	To make research a significant activity involving staff, students and society.	High
C2.	To promote public-private partnership.	High
C3.	To plan and continuously provide necessary infrastructure and learning resources required for quality education and innovations.	Medium
C4.	Inception of advanced Bivoltine rearing techniques in the farm fields through student community to generate foreign exchange and see the import of Chinese silk is stopped to save the industry.	High
FUTURE PLANS		Importance (H/M/L)
F1.	Establishment of Community college in Sericulture	Approved and in progress
F2.	Establishment of Mulberry Gene Bank with Exotic and Indigenous Varieties provided the funding and water	Proposal is ready for submission under MRP
F3.	To Establish Income generative small scale industry with student participation.	

DEPARTMENT OF HISTORY

1. Name of the Department: HISTORY
2. Year of Establishment:1975
3. Names of Programmes/Courses offered
 - a) UG :YES
 - b) PG : NIL
 - c) M.Phil : NIL
 - d) Ph.D : NIL
 - e) Integrated Masters : NIL
 - f) Integrated Ph.D : NIL
4. Names of Interdisciplinary courses and the departments / units involved: NIL
5. Annual / semester / choice based credit system (programme wise): Annual
6. Participation of the department in the courses offered by other departments: NIL
7. Courses in collaboration with other universities, industries, foreign institutions, etc.:NIL
8. Details of courses / programmes discontinued (if any) with reasons: NIL
9. Number of teaching posts

Designation	Sanctioned	Filled
Professors	NIL	NIL
Associate Professors	NIL	NIL
Assistant Professors / Lecturers	2	2

10. Faculty profile with name, qualification, designation, specialization
(D.Sc./D.Litt./Ph.D/ M. Phil. etc.)

Name	Qualification	Designation	Specialization	Experience in years	No. of Ph.D., students guided for the last 4 years
Dr. V. Raj Mahammadh	M.A(His), M.A.(Eng), M.Phil, Ph.D	Assistant Professors	History	4	NIL
Sri. Chandra	M.A.	Guest Faculty	History	4	NIL

11. List of senior visiting faculty: 5
 - 1) Prof. Rekha Pande, Head, Dept. of History, University of Hyderabad
 - 2) Prof. Atturi Murali, Dept. of History, University of Hyderabad
 - 3) Prof. M N Rajesh, Dept. of History, University of Hyderabad
 - 4) Prof. Eswar Reddy, Dept. of History, University of Hyderabad
 - 5) Dr. V. Dhan Raj, Dept. of History, Assam Central University
12. Percentage of lecturers delivered and practical classes handled (Program wise) by temporary faculty: NIL
13. Student -Teacher ratio (Program wise): 160:1
14. Number of academic support staff (technical) and administrative staff ; sanctioned and filled: NIL
15. Qualifications of teaching faculty with DSc/ D. Litt/ Ph.D/ M.Phil/ P.G.: Ph.D-2
16. Number of faculty with ongoing projects from funding agencies and grants received.
 - a) National : NIL
 - b) International: NIL
17. Department projects funded by DST-FIST; UGC, DBT, ICSSR, etc. and total grants received :NIL
18. Research centre / facility recognized by the University: NIL
19. Publications:
 - Publication per faculty: 4 National and 5 State Level Publications
 - Number of papers published in peer reviewed journals (National/International) by faculty and students.: 14 International publications
 - Number of publications listed in International database (For Eg. Web of Science, Scopus, Humanities International Complete, Dare Database, International social sciences directory, EBSCO host, etc.): 4
 - Monographs: Under Progress
 - Chapters in Books: NIL
 - Books edited: NIL
 - Books with ISBN/ISSN numbers with details of publishers: NIL
 - Citation Index: NIL
 - SNIP: NIL
 - SJR: NIL
 - Impact factor: 3.5

- h-index: NIL
20. Areas of consultancy and income generated: NIL
21. Faculty as members in
- a) National Committees: Indian History Congress, Indian Social Science Congress, South Indian History Congress, A.P History Congress
 - b) International Committees: NIL
 - c) Editorial Boards: NIL
22. Student Projects
- a) Percentage of students who have done in-house projects including interdepartmental/programme: 50 %
 - b) Percentage of students placed for projects in organizations outside the institution i.e.in Research laboratories/Industry/other agencies: NIL
23. Awards/ Recognitions received by faculty and students: Best Master Trainer Award, Red Ribbon Club, Govt. of AP
24. List of eminent academicians and scientists/ visitors to the department:
- 1) Prof. Rekha Pande, Head, Dept. of History, University of Hyderabad
 - 2) Prof. Atturi Murali, Dept. of History, University of Hyderabad
 - 3) Prof. M N Rajesh, Dept. of History, University of Hyderabad
 - 4) Prof. Eswar Reddy, Dept. of History, University of Hyderabad
 - 5) Dr. V. Dhan Raj, Dept. of History, Assam Central University
25. Seminars/ Conferences/Workshops organized & the source of funding
- a) National : NIL
 - b) International: NIL
26. Student profile programme/course wise:

Name of the Course/programme (refer question no. 4)	Applications received	Selected	Enrolled		Pass percentage
			Male	Female	
I B.A.	100	100	56	44	-
II B.A.	112	112	75	37	99
III B.A.	92	92	48	44	98

27. Diversity of Students

Name of the Course	% of students from the Same state	% of students from other States	% of students from abroad
B.A.	100%	NIL	NIL

28. How many students have cleared national and state competitive examinations such as NET, SLET, GATE, Civil services, Defense services, etc. ? : 10 %

29. Student progression

Student progression	Against % enrolled
UG to PG	30 %
PG to M.Phil.	5 %
PG to Ph.D.	2 %
Ph.D. to Post-Doctoral	NIL
Employed <ul style="list-style-type: none"> • Campus selection • Other than campus recruitment 	20 %
Entrepreneurship/Self-employment	20 %

30. Details of Infrastructural facilities

- a) Library: Yes
- b) Internet facilities for Staff & Students: NIL
- c) Class rooms with ICT facility: NIL
- d) Laboratories: NIL

31. Number of students receiving financial assistance from college, university, Government or other agencies: 80%

32. Details on student enrichment programmes (special lectures/workshops/Seminar) with external experts: 4 Special Lecturers per year, 2 workshops per year, 6 student seminars per year

33. Teaching methods adopted to improve student learning: Lecture, Interactive, student participants seminar, workshops, pair & pair project works etc.,

34. Participation in Institutional Social Responsibility (ISR) and Extension activities: The College Staff and Students were participated in rally on International AIDS Day and NSS day, flood relief, blood donation etc.

35. SWOC analysis of the department and Future plans:

- **Strengths**
 - Direct Recruitess by APPSC, Govt. of AP
 - Qualified staff with considerable experience both in teaching and research.
 - Good employment opportunity.
 - Good Academic record
- **Weakness**
 - Most of the students are from rural area, lack of awareness about history
- **Opportunities**
 - Can get many jobs with good communication skills.
 - Good demand for History in Competitive examinations, particularly Cavils, Group-I and Group-II.
- **Challenges**
 - Most of the students prefer to go for science group.
- **Future Plans**

The Department

- Contemplates starting of P.G. Course.
- Strongly desires to organize a national seminar on “Recent Trends in Modern Indian History” and Westren medicine in South India (1990-1947) for international conference.
- Wishes to start an Indian History Magazine.
- Wishes to conduct workshops for Students around the Kadiri region.
- To create awareness about the importance of History in rural background students.
- To host Andhra Pradesh History Congress and South Indian History Congress.
- To use new teaching methods along with ICT technology
- To start historical museum magazine
- To strengthen library

DEPARTMENT OF ECONOMICS

1. Name of the Department: ECONOMICS
2. Year of Establishment: 1975
3. Names of Programmes / Courses offered
 - a) UG : YES
 - b) PG : NIL
 - c) M.Phil : NIL
 - d) Ph.D : NIL
 - e) Integrated Masters : NIL
 - f) Integrated Ph.D : NIL
4. Names of Interdisciplinary courses and the departments / units involved: NIL
5. Annual / semester / choice based credit system (programme wise): Annual
6. Participation of the department in the courses offered by other departments: NIL
7. Courses in collaboration with other universities, industries, foreign institutions, etc.:NIL
8. Details of courses / programmes discontinued (if any) with reasons: NIL
9. Number of teaching posts

Designation	Sanctioned	Filled
Professors	NIL	NIL
Associate Professors	NIL	NIL
Assistant Professors / Lecturers	1	1

10. Faculty profile with name, qualification, designation, specialization
(D.Sc/D.Litt./Ph.D/ M. Phil. etc.)

Name	Qualification	Designation	Specialization	Experience in years	No. of Ph.D., students guided for the last 4 years
Miss. S. Chittemma	M.A. (Eco)	Lecturer	Industrial Economics	2	NIL

11. List of senior visiting faculty: NIL
12. Percentage of lecturers delivered and practical classes handled (Program wise) by

temporary faculty: NIL

13. Student – Teacher ratio (Program wise): 153:1

14. Number of academic support staff (technical) and administrative staff ; sanctioned and filled: NIL

15. Qualifications of teaching faculty with DSc/ D. Litt/ Ph.D/ M.Phil/ P.G. : P.G-1

16. Number of faculty with ongoing projects from funding agencies and grants received.

a) National : NIL

b) International: NIL

17. Department projects funded by DST-FIST; UGC, DBT, ICSSR, etc. and total grants received :NIL

18. Research centre / facility recognized by the university: NIL

19. Publications:

- Publication per faculty: NIL
- Number of papers published in peer reviewed journals (National / International) by faculty and students.
- Number of publications listed in International database (For Eg. Web of Science, Scopus, Humanities International Complete, Dare Database, International social sciences directory, EBSCO host, etc.)
- Monographs: NIL
- Chapters in books:
- Books edited: NIL
- Books with ISBN/ISSN numbers with details of publishers
- Citation Index:
- SNIP:NIL
- SJR:NIL
- Impact factor: NIL
- h-index: NIL

20. Areas of consultancy and income generated: NIL

21. Faculty as members in

a) National committees: NIL

b) International Committees: NIL

c) Editorial Boards: NIL

22. Student projects

- a) Percentage of students who have done in-house projects including interdepartmental/programme: 50 %
- b) Percentage of students placed for projects in organizations outside the institution i.e.in Research laboratories/Industry/other agencies: NIL

23. Awards/ Recognitions received by faculty and students

24. List of eminent academicians and scientists/ visitors to the department: NIL

25. Seminars/ Conferences/Workshops organized & the source of funding

- a)National: NIL
- b)International: NIL

26. Student profile programme/course wise:

Name of the Course/programme (refer question no. 4)	Applications received	Selected	Enrolled		Pass percentage
			Male	Female	
I B.A	60	60			
II B.A.	48	48			72 %
III B.A.	44	44			75 %

27. Diversity of Students

Name of the Course	% of students from the Same state	% of students from other States	% of students from abroad
I B.A.	60	NIL	NIL
II B.A.	48	NIL	NIL
III B.A.	44	NIL	NIL

28. How many students have cleared national and state competitive examinations such as NET, SLET, GATE, Civil services, Defense services, etc. ? NIL

29. Student progression

Student progression	Against % enrolled
UG to PG	15%
PG to M.Phil.	NIL
PG to Ph.D.	NIL
Ph.D. to Post-Doctoral	NIL
Employed	
• Campus selection	NIL
• Other than campus recruitment	NIL

Entrepreneurship/Self-employment	NIL
----------------------------------	-----

30. Details of Infrastructural facilities

- a) Library: 60 books
- b) Internet facilities for Staff & Students: NIL
- c) Class rooms with ICT facility: NIL
- d) Laboratories: NIL

31. Number of students receiving financial assistance from college, university, Government or other agencies: 80

32. Details on student enrichment programmes (special lectures / workshops /Seminar) with external experts: 2 Guest Lectures arranged

33. Teaching methods adopted to improve student learning: Lecture Method and Interactive method Participation in Institutional Social Responsibility (ISR) and Extension activities: Our Students were participated in International AIDS Day NSS day, flood relief and blood donation camps.

34. SWOC analysis of the department and Future plans:

- **Strengths**
 - Qualified staff with considerable experience both in teaching and research.
 - Good employment opportunity.
- **Weakness**
 - Most of the students are from rural area, lack of previous knowledge in the subject is somewhat alarming.
- **Opportunities**
 - Good opportunities in financial sector
 - Good Demand for Economics in Group-I,II & III, and Civil Services
- **Challenges**
 - Now a days most of the students go for commerce
 - No demand for the subject at lower level
- **Future Plans**
The Department
 - Contemplates starting of P.G. Course.
 - Strongly desires to organize a national seminar on “Recent Trends in Modern Economy”.

DEPARTMENT OF POLITICAL SCIENCE

1. Name of the Department: Political Science
2. Year of Establishment: 1975
3. Names of Programmes / Courses offered
 - a) UG :BA(UHP), BA(THP & HEP)
 - b) PG :NIL
 - c) M.Phil :NIL
 - d) Ph.D :NIL
 - e) Integrated Masters :NIL
 - f) Integrated Ph.D :NIL
4. Names of Interdisciplinary courses and the departments / units involved: NIL
5. Annual/semester/choice based credit system (programme wise): Annual
6. Participation of the department in the courses offered by other departments: NIL
7. Courses in collaboration with other universities, industries, foreign institutions, etc.:
NIL
8. Details of courses / programmes discontinued (if any) with reasons: NIL
9. Number of teaching posts

Designation	Sanctioned	Filled
Professors	NIL	NIL
Associate Professors	NIL	NIL
Assistant Professors / Lecturers	02	02

10. Faculty profile with name, qualification, designation, specialization (D.Sc./ D.Litt./Ph.D/M. Phil. etc.)

Name	Qualification	Designation	Specialization	Experience in years	No. of Ph.D., students guided for the last 4 years
Dr. K. Eswara Reddy	M.A., Ph.D	Lecturer	Personnel Management	7	-
D. Narasimhulu	MA	Lecturer	-	7	-

11. List of senior visiting faculty:

- 1) Prof. B. Anand Naidu, Prof. in Political Science, SKU, Ananthapuram.
- 2) Prof. P. W. Purushotham, Prof. in Political Science, SKU, Ananthapuram.
- 3) Prof. A. Reddapa Reddy, Prof. in Political Science, SVU, Tirupathi.
- 4) Dr. N. Rangaswamy, Principal, Govt. College (M), Ananthapuram.

12. Percentage of lecturers delivered and practical classes handled (Program wise) by temporary faculty: NIL

13. Student – Teacher ratio (Program wise): 300:2

14. Number of academic support staff (technical) and administrative staff ; sanctioned and filled: NIL

15. Qualifications of teaching faculty with DSc/ D. Litt/Ph.D/ M.Phil/ P.G.:Ph.D-1, P.G-1

16. Number of faculty with ongoing projects from funding agencies and grants received.

- a) National :NIL
- b) International :NIL

17. Department projects funded by DST-FIST; UGC, DBT, ICSSR, etc. and total grants received: UGC-Rs.220000

18. Research centre / facility recognized by the university: NIL

19. Publications:

- Publication per faculty: 10
- Number of papers published in peer reviewed journals (National / International) by faculty and students.: NIL
- Number of publications listed in International database (For Eg. Web of Science, Scopus, Humanities International Complete, Dare Database, International social sciences directory, EBSCO host, etc.)
- Monographs:NIL
- Chapters in books: NIL
- Books edited:NIL
- Books with ISBN/ISSN numbers with details of publishers
- Citation Index:
- SNIP:NIL
- SJR:NIL
- Impact factor:NIL
- h-index: NIL

20. Areas of consultancy and income generated: Nursery: forestry: NIL.

21. Faculty as members in

- a) National committees: NIL
- b) International Committees: NIL
- c) Editorial Boards: NIL

22. Student projects

- a) Percentage of students who have done in-house projects including interdepartmental/programme: 90 %
- b) Percentage of students placed for projects in organizations outside the institution i.e.in Research laboratories/Industry/other agencies: NIL

23. Awards/Recognitions received by faculty and students: NIL

24. List of eminent academicians and scientists/ visitors to the department:

- 1) Prof. B. Anand Naidu, Prof. in Political Science, SKU, Ananthapuram.
- 2) Prof. P. W. Purushotham, Prof. in Political Science, SKU, Ananthapuram.
- 3) Prof. A. Reddapa Reddy, Prof. in Political Science, SVU, Tirupathi.
- 4) Dr. N. Rangaswamy, Principal, Govt. College (M), Ananthapuram.

25. Seminars/ Conferences/Workshops organized & the source of funding

- a) National: NIL
- b) International: NIL

26. Student profile programme/course wise:

Name of the Course/programme (refer question no. 4)	Applications received	Selected	Enrolled		Pass percentage
			Male	Female	
I B.A.(HEP & THP)	100	100	56	44	-
II B.A.(HEP & THP)	112	112	75	37	73
III B.A.(HEP & THP)	81	81	38	43	98

27. Diversity of Students

Name of the Course	% of students from the Same state	% of students from other States	% of students from Abroad
B.A.	100 %	NIL	NIL

28. How many students have cleared national and state competitive examinations such as NET, SLET, GATE, Civil services, Defense services, etc.?: NIL

29. Student Progression

Student progression	Against % enrolled
UG to PG	20 %
PG to M.Phil.	-
PG to Ph.D.	-
Ph.D. to Post-Doctoral	-
Employed <ul style="list-style-type: none"> • Campus selection • Other than campus recruitment 	-
Entrepreneurship/Self-employment	-

30. Details of Infrastructural facilities

- a) Library: 100
- b) Internet facilities for Staff & Students: Yes, Provided
- c) Class rooms with ICT facility: NIL
- d) Laboratories: NIL

31. Number of students receiving financial assistance from college, university, Government or other agencies: 150

32. Details on student enrichment programmes (special lectures/workshops/Seminar) with external experts: special lectures-2, Seminar-1.

33. Teaching methods adopted to improve student learning:

Lecture, Deductive, Inductive and Interactive methods

34. Participation in Institutional Social Responsibility (ISR) and Extension activities:

- a) Participated In NSS Activities
- b) Rally Conducted on National Human Rights Day
- c) Rally Conducted on Aids Day
- d) Participated in Blood Donation Camp

35. SWOC analysis of the department and Future plans:

- **Strengths**
 - Well Qualified staff with considerable experience both in teaching and research.
 - High demand for Political Science.
 - Good employment opportunity in Groups.

- **Weakness**
 - Scarcity of funds to procure political journals and magazines.
 - No provision for departmental library.
 - Non availability of ICT enabled classroom.
- **Opportunities**
 - Job opportunities in teaching and planning.
 - Can become good citizens and politicians.
 - Hopeful that young India will assume leadership roles to provide clean, corruption free and committed governance.
- **Challenges**
 - Most of the students in this institute are first generation graduates. It is a challenging job to inspire and guide them.
 - With the removal of the optional in Groups and Civil Services demand for the subject is decreasing.
- **Future Plans**
 - Starting of P.G. Course.
 - Starting of a separate certificate course in Moral values.
 - Plan to organize a district level and national level seminar.
 - Planning to conduct more seminars to make the students confident enough to speak on any platform.
 - We aim to sensitize the politically active and socially sensitive students to have and to live a peaceful life.

DEPARTMENT OF COMMERCE

1. Name of the Department: COMMERCE
2. Year of Establishment :1975
3. Names of Programmes/Courses offered
 - a) UG : B.Com(CA), B.Com(General)
 - b) PG : M.Com
 - c) M.Phil : NIL
 - d) Ph.D : NIL
 - e) Integrated Masters : NIL
 - f) Integrated Ph.D : NIL
4. Names of Interdisciplinary courses and the departments / units involved: NIL
5. Annual / semester / choice based credit system (programme wise): UG-Annual, PG-Semester
6. Participation of the department in the courses offered by other departments: NIL
7. Courses in collaboration with other universities, industries, foreign institutions, etc.:NIL
8. Details of courses / programmes discontinued (if any) with reasons: NIL
9. Number of teaching posts

Designation	Sanctioned	Filled
Professors	NIL	NIL
Associate Professors	NIL	NIL
Assistant Professors / Lecturers	4	2

10. Faculty profile with name, qualification, designation, specialization

(D.Sc./D.Litt./Ph.D/ M. Phil. etc.)

Name	Qualification	Designation	Specialization	Experience in years	No. of Ph.D., students guided for the last 4 years
D. Narasimha Rao	M.Com., M.Phil	Lecturer	Cost Management	10	NIL
Sri. R. Sreeramulu	M.Com., M.Phil.,	Lecturer	Accounts	8	NIL

Sri S.Shabeer	M.Com	Guest Faculty	Income tax	6	-
Sri. K. Venkata Reddy	M.Com	Guest Faculty	Costing Accountancy	3	-

11. List of senior visiting faculty:

- 1) Dr. P. Chandra Sekhar Reddy, Rtd. Principal.
- 2) Sri. J. Anjineyappa, Rtd. Principal.
- 3) Sri. T. Kristappa, Rtd. Principal.
- 4) Sri. P. Harinath Gupta, Auditor.

12. Percentage of lecturers delivered and practical classes handled (Program wise) by temporary faculty: 50 %

13. Student – Teacher ratio (Program wise): 580:4

14. Number of academic support staff (technical) and administrative staff sanctioned and filled: NIL

15. Qualifications of teaching faculty with DSc/ D. Litt/ Ph.D/ M.Phil/ P.G.

M.Phil/ P.G.: M.Phil-2, PG-2.

16. Number of faculty with ongoing projects from funding agencies and grants received.

- a) National :NIL
- b) International :NIL

17. Department projects funded by DST-FIST; UGC, DBT, ICSSR, etc. and total grants received :NIL

18. Research centre / facility recognized by the university: NIL

19. Publications:

- Publication per faculty: NIL
- Number of papers published in peer reviewed journals (National/ International) by faculty and students. NIL
- Number of publications listed in International database (For Eg. Web of Science, Scopus, Humanities International Complete, Dare Database, International social sciences directory, EBSCO host, etc.)
- Monographs: NIL
- Chapters in books: NIL
- Books edited: NIL
- Books with ISBN/ISSN numbers with details of publishers
- Citation Index:

- SNIP:NIL
- SJR:NIL
- Impact factor: NIL
- h-index: NIL

20. Areas of consultancy and income generated: NIL.

21. Faculty as members in

- a) National committees: NIL
- b) International Committees: NIL
- c) Editorial Boards: NIL

22. Student projects

- a) Percentage of students who have done in-house projects including interdepartmental/programme: 10
- b) Percentage of students placed for projects in organizations outside the institution i.e.in Research laboratories/Industry/other agencies: NIL

23. Awards/ Recognitions received by faculty and students: NIL

24. List of eminent academicians and scientists/ visitors to the department:

- 1) Dr. P. Chandra Sekhar Reddy, Rtd. Principal.
- 2) Sri. J. Anjineyappa, Rtd. Principal.
- 3) Sri. T. Kristappa, Rtd. Principal.
- 4) Sri. P. Harinath Gupta, Auditor.

25. Seminars/Conferences/Workshops organized & the source of funding

- a) National: NIL
- b) International: NIL

26. Student profile programme/course wise:

Name of the Course/programme (refer question no. 4)	Applications received	Selected	Enrolled		Pass percentage
			Male	Female	
I B.Com(CA & General)	171	171	110	61	
II B.Com(CA)	99	99	60	39	20
II B.Com(General)	43	43	30	13	60.4
III B.Com(CA)	96	96	52	44	35
III B.Com(General)	52	52	38	14	65

27. Diversity of Students

Name of the Course	% of students from the Same state	% of students from other States	% of students from abroad
B.Com	100%	NIL	NIL

28. How many students have cleared national and state competitive examinations such as NET, SLET, GATE, Civil services, Defense services, etc.? NIL

29. Student Progression

Student progression	Against % Enrolled
UG to PG	20 %
PG to M.Phil.	-
PG to Ph.D.	-
Ph.D. to Post-Doctoral	-
Employed <ul style="list-style-type: none"> • Campus selection • Other than campus recruitment 	-
Entrepreneurship/Self-employment	-

30. Details of Infrastructural facilities

- a) Library: 450
- b) Internet facilities for Staff & Students: Available
- c) Class rooms with ICT facility: Available
- d) Laboratories: Available

31. Number of students receiving financial assistance from college, university, Government or other agencies: 400

32. Details on student enrichment programmes (special lectures/workshops/Seminar) with external experts: 4 Special Lectures.

33. Teaching methods adopted to improve student learning: ICT

34. Participation in Institutional Social Responsibility (ISR) and Extension activities:
The College Staff and Students participated in a rally on International AIDS Day and NSS day, flood relief, blood donation.

35. SWOC analysis of the department and Future plans:

- **Strengths**
 - Qualified staff with considerable experience both in teaching and research.
 - High demand for Commerce.
 - Good employment opportunity.
- **Weakness**
 - Lack of English medium in B.Com(CA) is only the weakness.
 - Lack of required regular faculty.
- **Opportunities**
 - Can get many jobs with good communication skills.
 - Good demand for Commerce.
 - Lot of demand in Book Keeping, DTP, Mandal Computer Operators in various government departments.
 - Good demand in Chit fund companies and local business firms.
- **Challenges**
 - Ananthapuram District is a non industrial corridor, so that employment opportunity is very bleak.
- **Future Plans**
 - Starting a Diploma Course in Entrepreneurship.
 - Starting of a Certificate Course in Tally.
 - Strongly desires to organize a national seminar on Consumer Awareness.

DEPARTMENT OF PHYSICAL EDUCATION

1. Name of the Department: PHYSICAL EDUCATION
2. Year of Establishment :1974
3. Names of Programmes / Courses offered
 - a) UG : YES
 - b) PG : NIL
 - c) M.Phil : NIL
 - d) Ph.D : NIL
 - e) Integrated Masters : NIL
 - f) Integrated Ph.D : NIL
4. Names of Interdisciplinary courses and the departments / units involved: NIL
5. Annual / semester / choice based credit system (programme wise): Annual
6. Participation of the department in the courses offered by other departments: NIL
7. Courses in collaboration with other universities, industries, foreign institutions, etc.:NIL
8. Details of courses / programmes discontinued (if any) with reasons: NIL
9. Number of teaching posts

Designation	Sanctioned	Filled
Professors	NIL	NIL
Associate Professors	NIL	NIL
Assistant Professors / Lecturers	1	1

10. Faculty profile with name, qualification, designation, specialization (D.Sc./ D.Litt./Ph.D/ M. Phil. etc.)

Name	Qualification	Designation	Specialization	Experience in years	No. of Ph.D., students guided for the last 4 years
Sri. K. Sreenivas a Prasad	MA., M.P.Ed., M.Phil	Physical Director	Cricket	01	-

11. List of senior visiting faculty: NIL

12. Percentage of lecturers delivered and practical classes handled (Program wise) by temporary faculty: NIL
13. Student – Teacher ratio (Program wise):1463:1
14. Number of academic support staff (technical) and administrative staff ; sanctioned and filled: 1
15. Qualifications of teaching faculty with DSc/ D. Litt/ Ph.D/ M.Phil/ P.G.
M.Phil-1
16. Number of faculty with ongoing projects from funding agencies and grants received.
 - a)National :NIL
 - b)International :NIL
17. Department projects funded by DST-FIST; UGC, DBT, ICSSR, etc. and total grants received :NIL
18. Research centre / facility recognized by the university: NIL
19. Publications:
 - Publication per faculty: NIL
 - Number of papers published in peer reviewed journals (National/ International) by faculty and students.: NIL
 - Number of publications listed in International database (For Eg. Web of Science, Scopus, Humanities International Complete, Dare Database, International social sciences directory, EBSCO host, etc.)
 - Monographs: NIL
 - Chapters in books: NIL
 - Books edited: NIL
 - Books with ISBN/ISSN numbers with details of publishers
 - Citation Index:
 - SNIP:NIL
 - SJR:NIL
 - Impact factor: NIL
 - h-index: NIL
20. Areas of consultancy and income generated: NIL
21. Faculty as members in
 - a) National committees: NIL
 - b) International Committees: NIL

c) Editorial Boards: NIL

22. Student projects

- a) Percentage of students who have done in-house projects including interdepartmental/programme: NIL
- b) Percentage of students placed for projects in organizations outside the institution i.e.in Research laboratories/Industry/other agencies: NIL

23. Awards/ Recognitions received by faculty and students: NIL

24. List of eminent academicians and scientists/ visitors to the department: NIL

25. Seminars/ Conferences/Workshops organized & the source of funding

a)National: NIL

b)International: NIL

26. Student profile programme/course wise:

Name of the Course/programme (refer question no. 4)	Applications received		Selected		Enrolled				Pass percentage
	M	F	M	F	MPC		MPCS		
					M	F	M	F	
NA									

27. Diversity of Students

Name of the Course	% of students from the Same state	% of students from other States	% of students from Abroad
NA	NA	NA	NA

28. How many students have cleared national and state competitive examinations such as NET, SLET, GATE, Civil services, Defense services, etc.?: NIL

29. Student progression

Student progression	Against % enrolled
UG to PG	NIL
PG to M.Phil.	NIL
PG to Ph.D.	NIL
Ph.D. to Post-Doctoral	NIL
Employed • Campus selection	NIL

• Other than campus recruitment	
Entrepreneurship/Self-employment	NIL

30. Details of Infrastructural facilities

- a) Library: NIL
- b) Internet facilities for Staff & Students: NIL
- c) Class rooms with ICT facility: NIL
- d) Laboratories: Gymnasium with fixed articles, 4 fumbles of weight

31. Number of students receiving financial assistance from college, university, Government or other agencies: NIL

32. Details on student enrichment programmes (special lectures/workshops/Seminar) with external experts: NIL

33. Teaching methods adopted to improve student learning: Special Coaching in games concerned

34. Participation in Institutional Social Responsibility (ISR) and Extension activities: Conducted many tournaments.

35. SWOC analysis of the department and Future plans:-

- **Strengths**
 - Yes qualified PD-1
 - 27 acres of ground with all courts
 - Well equipped gym
- **Weakness**
 - Students eager to go home to villages as lack of bus facilities
- **Opportunities**
 - Sports Person with considerable talent can get any post
- **Challenges**
 - With out assistants in the department it is very difficult to conduct tournaments

PRINCIPAL AND STAFF PARTICIPATING IN THE NATIONAL SEMINAR ORGANIZED BY DEPT. OF URDU



STUDENTS AND STAFF PARTICIPATING IN THE BLOOD DONATION PROGRAMME



JKC STUDENTS PARTICIPATING IN TEACH BACK PROGRAMME



COLLEGE DAY CELEBRATIONS



STUDENTS PARTICIPATING IN THE QUIZ COMPETITION



PRINCIPAL AND THE STUDENTS PARTICIPATING IN THE NEW YEAR CELEBRATION



Students and the Staff Participating in the Job Fair Held in the College in Collaboration with Rajiv Yuva Kiranalu Unit of Ananthapuramu



STUDENTS AND STAFF PARTICIPATING IN WOMEN EMPOWERMENT CELL ACTIVITIES



STUDENTS AND STAFF PARTICIPATING IN NSS SPECIAL PROGRAM AT YERRAGUNT LAPALLI



STUDENTS AND STAFF ON HISTORICAL TOUR



OUR COLLEGE STUDENT B.N.ROJA WITH STATE FIRST AWARD OF EXCELLENCE GIVEN BY THE COMMISSIONERATE OF COLLEGIATE EDUCATION, A.P., HYDERABAD

